

MONUMENT 597

CERTIFICATE OF LOCATION OF GOVERNMENT CORNER

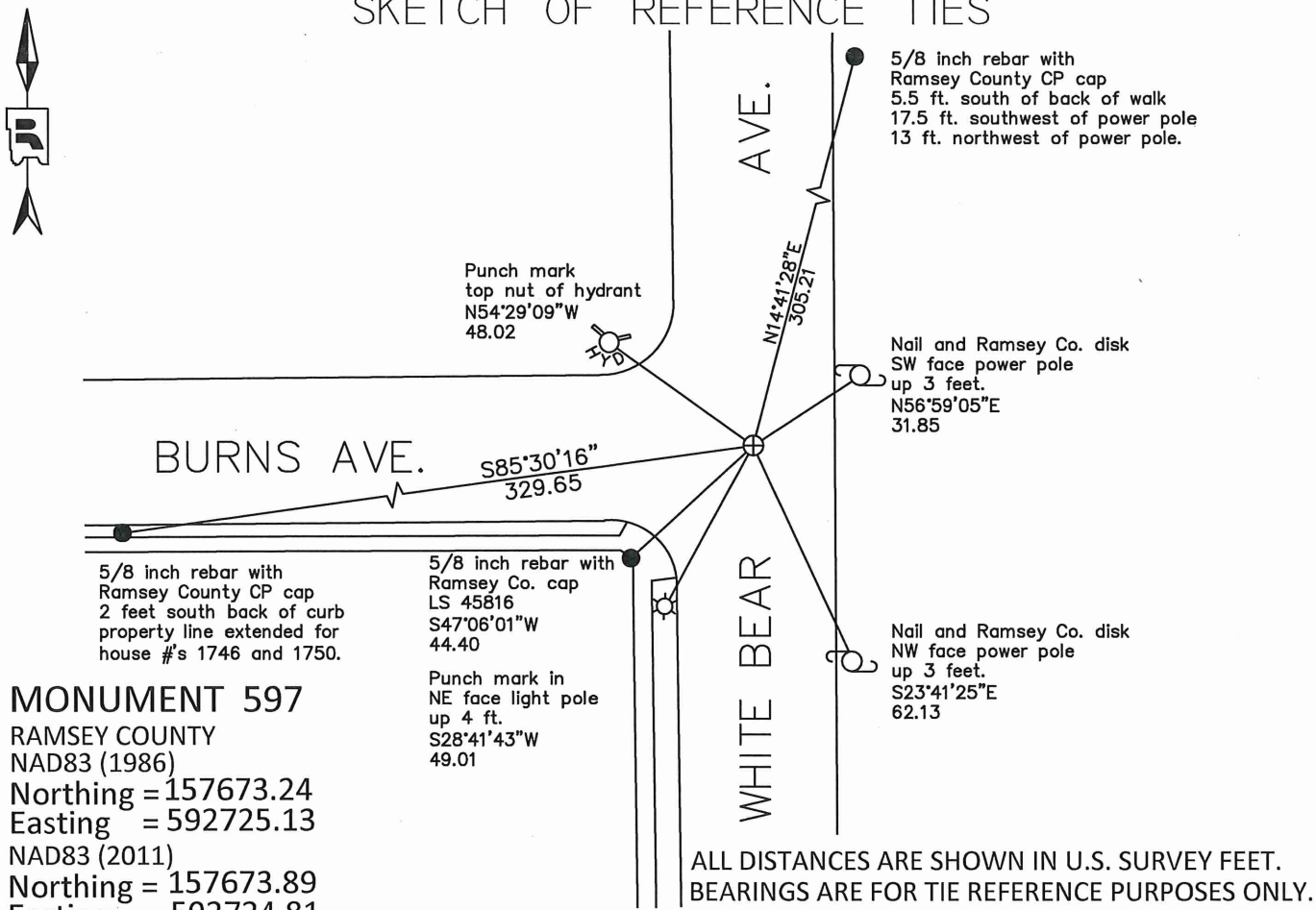
NE Corner of Section 3, Township 28 North, Range 22 West, County of Ramsey,
State of Minnesota.

At the corner location shown on the sketch

On May 14, 2019 found a cast iron monument, encased in concrete, flush in bituminous road.

On November 4, 2019 placed a 5/8 inch x 14 inch rebar with 3 inch aluminum cap stamped "Ramsey County Surveyor", flush in new bituminous road.

SKETCH OF REFERENCE TIES



Statements of evidence relative to this corner are on the following page.

I hereby certify that this survey, plan, or report was prepared by me or under my direct supervision, that I am a duly Licensed Land Surveyor under the laws of the state of Minnesota, and that this certificate is correct and complete to the best of my knowledge and belief.

Devin R. Ball 12/15/21

Devin R. Ball Date
 Deputy County Surveyor
 Minnesota License No. 56023

OFFICE OF COUNTY SURVEYOR
 County of Ramsey

I hereby certify that this document was filed in the County Surveyor's office this 21st day of December, 20 21.

Daniel D. Baar

Daniel D. Baar, L.S.
 Ramsey County Surveyor
 Minnesota License No. 45816

MONUMENT 597

NE Corner of Section 3, Township 28, Range 22

| | |
|-------------------|---|
| October 6, 1847 | West between Sections 2 and 35, set post at 80.00 chains. B. Oak 12 N. 70 W. 77 B. Oak 18 S. 58 W. 58 James M. Marsh Deputy Surveyor |
| January 14, 1891 | Monument set by J H Armstrong. City of St. Paul Surveyor's Office |
| March 11, 1907 | Auditor's Subdivision No. 55 shows a square (stone?) monument symbol at NE Corner of Section 3, Township 28, Range 22. John B. Irvine, Ramsey County Surveyor |
| March 27, 1918 | Monument reset by C. Cummings. City of St. Paul Surveyor's Office |
| April 4, 1933 | Placed ties on the stone monument. City of St. Paul Surveyor's Office |
| Circa 1970's | Cast iron monument set to grade. City of St. Paul Surveyor's Office |
| November 9, 1973 | R.L.S No. 282 shows a cast iron monument at NE Corner of Sec 3, Township 28, Range 22. |
| April 29, 1977 | R.L.S. No. 316 shows a cast iron monument at the NE Corner of Sec. 3, Twp. 28, Rng. 22. |
| May 18, 1995 | Found cast iron monument, placed ties, removed monument for milling work. Ramsey County Surveyor's Office |
| May 20, 1996 | Set 20 inch long cast iron monument in concrete. Ramsey County Surveyor's Office |
| March 17, 2000 | Found cast iron monument at grade. City of St. Paul Surveyor's Office |
| September 4, 2012 | Found cast iron monument at street grade. City of St. Paul Surveyor's Office |
| May 14, 2019 | Found cast iron monument, encased in concrete, in bituminous road. Checked local ties and established offsets prior to removal during road construction. Ramsey County Surveyor's Office |
| November 4, 2019 | Placed a 5/8 inch x 14 inch rebar with 3 inch aluminum cap stamped "Ramsey County Surveyor", flush in new bituminous road using offsets and recorded local ties. Ramsey County Surveyor's Office |