

# MONUMENT 585

## CERTIFICATE OF LOCATION OF GOVERNMENT CORNER

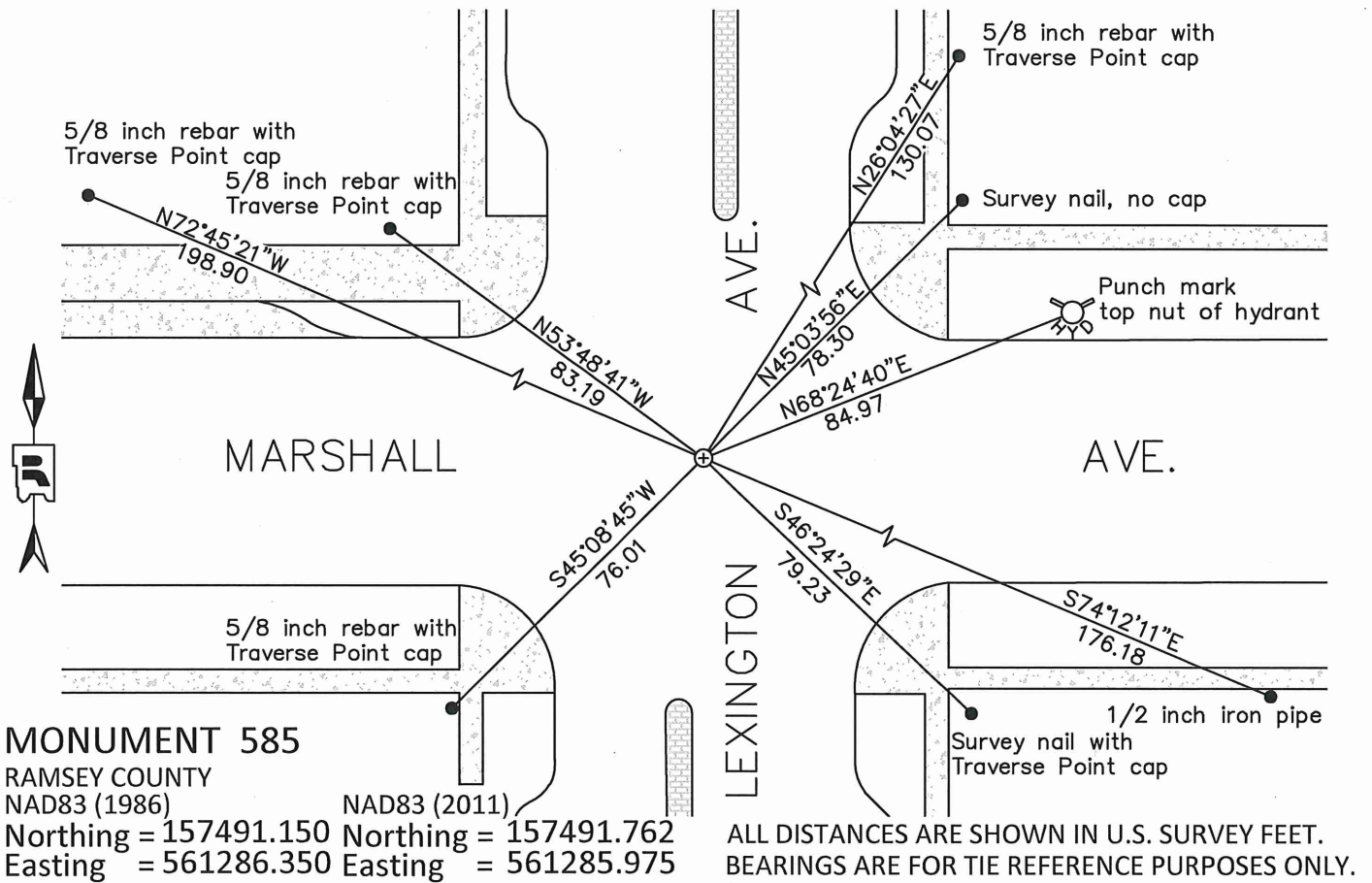
NE Corner of Section 3, Township 28 North, Range 23 West, County of Ramsey, State of Minnesota.

At the corner location shown on the sketch

On August 14, 2018 found a cast iron monument, encased in concrete, flush in bituminous road.

On August 22, 2018 placed a 5/8 inch X 14 inch rebar with 3 inch aluminum cap stamped "Ramsey County Surveyor", flush in new bituminous road.

### SKETCH OF REFERENCE TIES



Statements of evidence relative to this corner are on the following page.

I hereby certify that this survey, plan, or report was prepared by me or under my direct supervision, that I am a duly Licensed Land Surveyor under the laws of the state of Minnesota, and that this certificate is correct and complete to the best of my knowledge and belief.

Devin R. Ball      12/15/21

Devin R. Ball      Date  
 Deputy County Surveyor  
 Minnesota License No. 56023

OFFICE OF COUNTY SURVEYOR  
 County of Ramsey

I hereby certify that this document was filed in the County Surveyor's office this 21<sup>st</sup> day of December, 2021.

Daniel D. Baar

Daniel D. Baar, L.S.  
 Ramsey County Surveyor  
 Minnesota License No. 45816

# MONUMENT 585

NE Corner of Section 3, Township 28, Range 23 West

October 7, 1847	West between Sections 2 and 35, set post at 80.00 chains and made mound. Pit 8 links south. James M. Marsh Deputy Surveyor
August 27, 1888	Monument set by J H Armstrong. City of St. Paul Surveyor's Office
June 23, 1972	Found GM with brass plug set in hole, removed brass plug, set CIM over GM. City of St. Paul Surveyor's Office
March 13, 1985	Monument is 2.14' west of CL S.M.H. City of St. Paul Surveyor's Office
March 1987	Found CIM. City of St. Paul Surveyor's Office
September 21, 1995	Found CIM. City of St. Paul Surveyor's Office
April 4, 1997	Found CIM. City of St. Paul Surveyor's Office
March 2000	Found CIM at grade. City of St. Paul Surveyor's Office
August 14, 2018	Found a cast iron monument, encased in concrete, in bituminous road. Checked local ties and established offsets prior to removal during road construction. Ramsey County Surveyor's Office
August 22, 2018	Placed a 5/8 inch x 14 inch rebar with 3 inch aluminum cap stamped "Ramsey County Surveyor", flush in new bituminous road using offsets and recorded local ties. Ramsey County Surveyor's Office