

MONUMENT 530

CERTIFICATE OF LOCATION OF GOVERNMENT CORNER

East Quarter of Section 26, Township 29 North, Range 22 West, County of Ramsey, State of Minnesota.

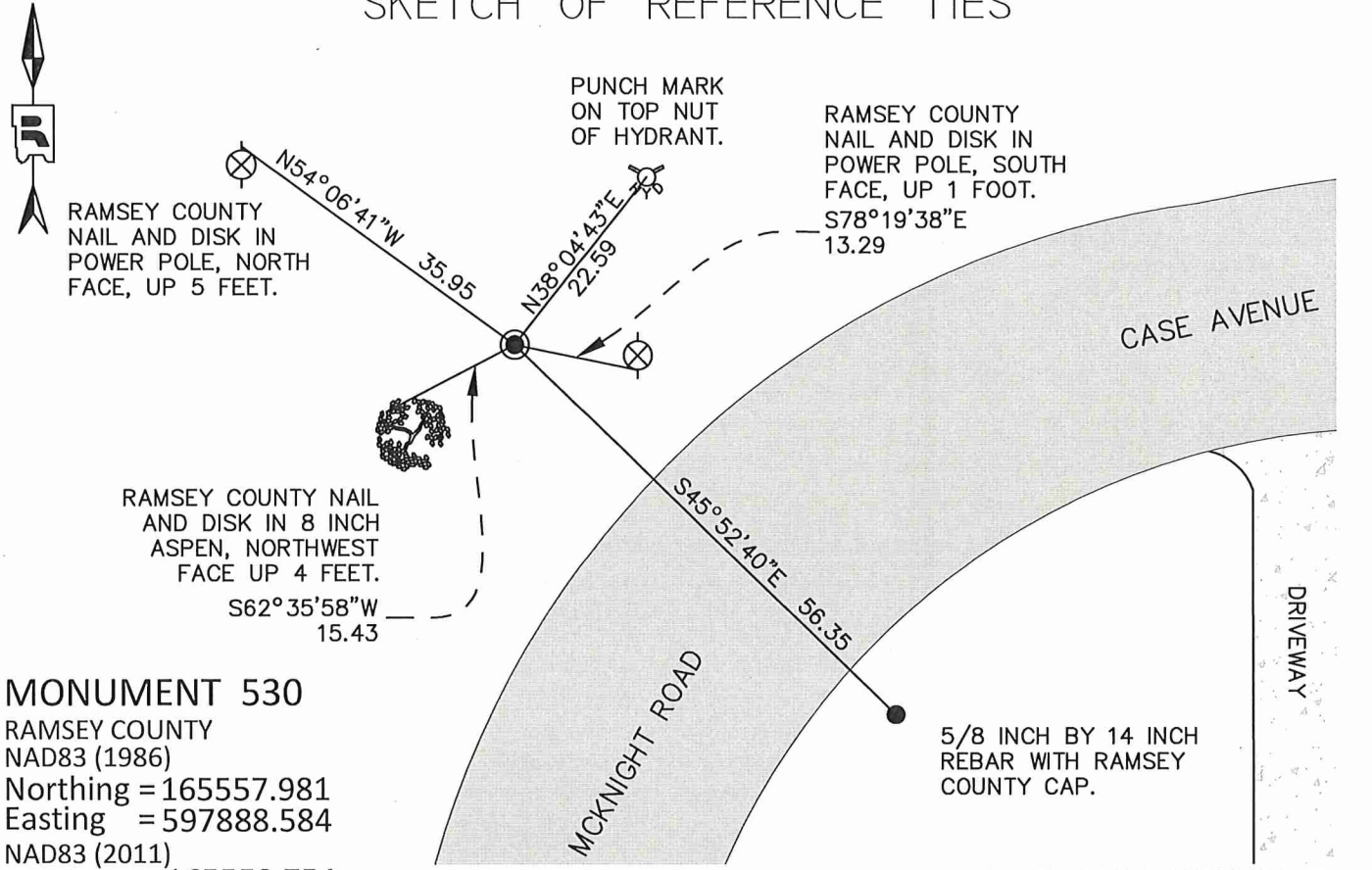
At the corner location shown on the sketch

On July 12, 2017 found a cast iron monument, flush.

left monument as found raised/lowered monument removed monument (explain)

On _____ placed a _____

SKETCH OF REFERENCE TIES



MONUMENT 530
 RAMSEY COUNTY
 NAD83 (1986)
 Northing = 165557.981
 Easting = 597888.584
 NAD83 (2011)
 Northing = 165558.754
 Easting = 597888.230

ALL DISTANCES ARE SHOWN IN U.S. SURVEY FEET.
 BEARINGS ARE FOR TIE REFERENCE PURPOSES ONLY.

Statements of evidence relative to this corner are on the following page.

I hereby certify that this survey, plan, or report was prepared by me or under my direct supervision, that I am a duly Licensed Land Surveyor under the laws of the state of Minnesota, and that this certificate is correct and complete to the best of my knowledge and belief.

Daniel D. Baar
 Daniel D. Baar
 Ramsey County Surveyor
 Minnesota License No. 45816

8/24/21
 Date

OFFICE OF COUNTY SURVEYOR
 County of Ramsey

I hereby certify that this document was filed in the County Surveyor's office this 24th day of August, 2021.

Daniel D. Baar
 Daniel D. Baar, L.S.
 Ramsey County Surveyor

MONUMENT 530

East Quarter Corner of Section 26, Township 29 North, Range 22 West

November 24, 1847	North between Sections 25 and 26 at 40.00 chains Set 1/4 Section post. B Oak 8 S28W 38; Bur Oak 10 S70E 43 Issac N. Higbee, Deputy Surveyor
October 24, 1890	Monument set by J.H. Armstrong.
November, 1890	One bearing tree in. Exact date unknown. J.H. Armstrong.
February 5, 1934	Placed ties on the granite monument which was found 6 inches below grade. City of Saint Paul Surveyor's Office.
May 18, 1962	Reset monument using City of Saint Paul ties. Ramsey County Engineer's Office.
April 4, 1972	Found cast iron monument 0.8 feet below grade. City of Saint Paul Surveyor's Office.
May 22, 1972	Replaced County cast iron monument with City monument. City of Saint Paul Surveyor's Office.
May 23, 1972	Patched and placed ties. City of Saint Paul Surveyor's Office.
1975	Found cast iron monument, exact date unknown. Ramsey County Surveyor's Office.
February, 1987	Set cast iron monument at grade in concrete base. Exact date unknown. City of Saint Paul Surveyor's Office.
August 15, 1989	Retied monument. Ramsey County Surveyor's Office.
September 4, 1991	Recovered cast iron monument and placed ties. City of Saint Paul Surveyor's Office.
September 23, 1993	Retied monument. Ramsey County Surveyor's Office.
May 22, 2002	Found cast iron monument marked "ST PAUL CITY SURVEYORS" at grade. Photos taken. City of Saint Paul Surveyor's Office.
April 15, 2003	Found monument, flush. Retied monument. Ramsey County Surveyor's Office.
June 3, 2009	Found cast iron monument, flush. Retied monument. Ramsey County Surveyor's Office.
September 13, 2012	Found cast iron monument set in concrete 0.4 feet below grade. Photos taken. City of Saint Paul Surveyor's Office.

MONUMENT 530

East Quarter Corner of Section 26, Township 29 North, Range 22 West

May 1, 2014

Found a cast iron monument, flush. Checked ties using certificate of location dated June 3, 2009. All ties present and in good condition except nail and disk in twin 10 inch Elm is missing - tree cut down. However, found a tie from 4-15-2003, nail and disk in 22 inch Cottonwood up 3 feet, bearing SW a distance of 101.98 feet.

Ramsey County Surveyor's Office.

July 12, 2017

Found cast iron monument, flush. Retied monument.

Ramsey County Surveyor's Office.