

MONUMENT 528

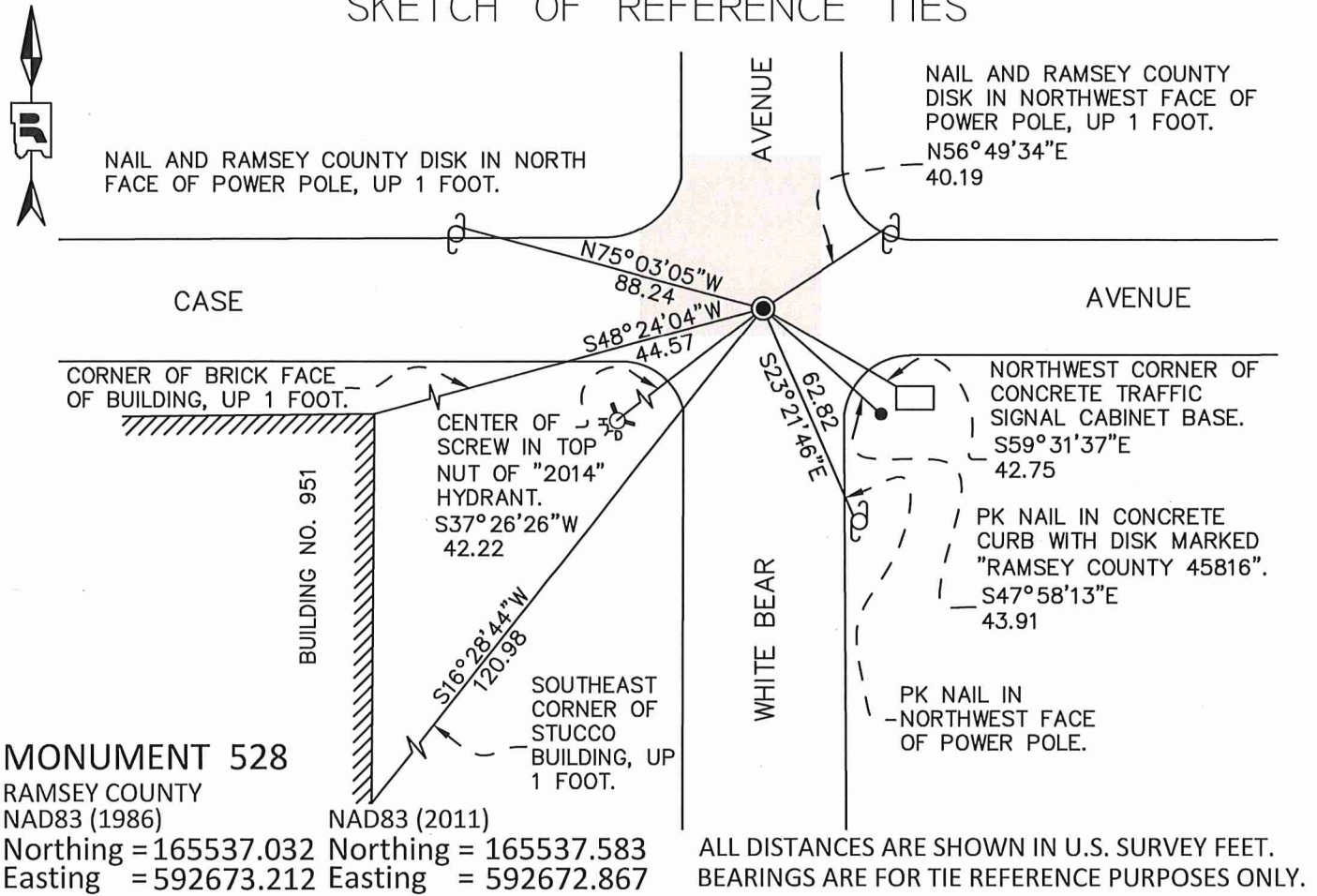
CERTIFICATE OF LOCATION OF GOVERNMENT CORNER

East Quarter Corner of Section 27, Township 29 North, Range 22 West, County of Ramsey, State of Minnesota.

At the corner location shown on the sketch

- On October 4, 2017 found an 8" x 8" granite monument with top partially broken, 1" below milled road surface. Drill hole still mostly visible.
- left monument as found
 raised/lowered monument
 removed monument (explain)
- On October 10, 2017 placed a 3" survey nail with Ramsey County disk flush in bituminous directly above the drill hole.

SKETCH OF REFERENCE TIES



Statements of evidence relative to this corner are on the following page.

I hereby certify that this survey, plan, or report was prepared by me or under my direct supervision, that I am a duly Licensed Land Surveyor under the laws of the state of Minnesota, and that this certificate is correct and complete to the best of my knowledge and belief.

Daniel D. Baar 5/20/21
 Daniel D. Baar Date
 Ramsey County Surveyor
 Minnesota License No. 45816

OFFICE OF COUNTY SURVEYOR
 County of Ramsey

I hereby certify that this document was filed in the County Surveyor's office this 20th day of May, 2021.

Daniel D. Baar
 Daniel D. Baar, L.S.
 Ramsey County Surveyor

MONUMENT 528

East Quarter Corner of Section 27, Township 29, Range 22

November 25, 1847	At 40.00 chains, while running north between Sections 26 and 27, set a 1/4 Section post. Burr Oak 12 N56W 29. Burr Oak 12 S29E 56. Isaac Higbee, Deputy Surveyor
November, 1890	Monument set by J.H. Armstrong. Exact date unknown. City of St Paul Surveyor's Office
January, 1947	Placed ties on 1/2 inch drill hole. See FB 1382 page 36. Exact date unknown. City of Saint Paul Surveyor's Office
May 24, 1972	Patched around granite monument. See FB 1689A page 15. City of Saint Paul Surveyor's Office
June 23, 1982	Traversed through granite monument. See FB 1549I page 78. City of Saint Paul Surveyor's Office
March 12, 1987	Placed iron pin at grade. See yellow tie book. City of Saint Paul Surveyor's Office
December 4, 1988	Found granite monument. Placed ties. See yellow tie book. City of Saint Paul Surveyor's Office
June 13, 2002	Found granite monument 0.05 feet below milled surface. Top of granite monument chewed up. County will overlay with 1.5 inches of asphalt. Left monument as found. City of Saint Paul Surveyor's Office
June 14, 2002	Traversed through granite monument. See FB 1737 page 27. City of Saint Paul Surveyor's Office
June 14, 2002	Placed ties on granite monument. Placed magnet in granite monument. See FB 1737 page 28. City of Saint Paul Surveyor's Office
September 13, 2012	Found iron pin at street grade. Photos taken. City of Saint Paul Surveyor's Office
May 30, 2017	Set monument offsets prior to removal for road construction. Ramsey County Surveyor's Office
October 4, 2017	Found 8 inch by 8 inch granite monument with top chewed up and partially broken 1 inch below milled bit surface. Drill hole still mostly visible. Set radial ties to place surface marker flush in new road. Ramsey County Surveyor's Office
October 10, 2017	Set 3 inch survey nail with Ramsey County disk over granite monument in new road. Set nail based off locations shown on notes dated 10-4-17. Retied. Ramsey County Surveyor's Office