

MONUMENT 372

CERTIFICATE OF LOCATION OF GOVERNMENT CORNER

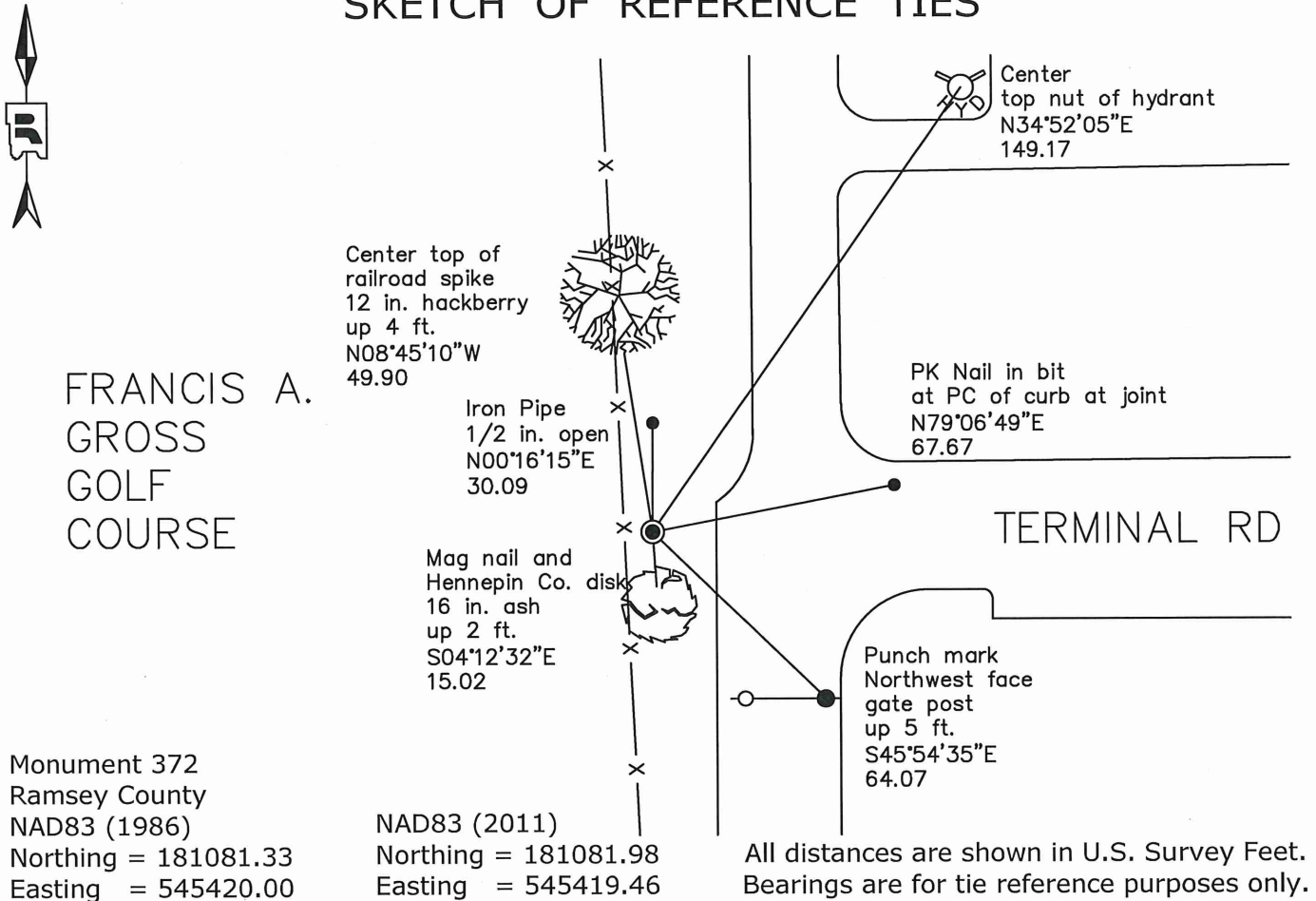
West Quarter Corner of Section 8, Township 29 North, Range 23 West, County of Ramsey, State of Minnesota.

At the corner location shown on the sketch

On October 25, 2018 found a "Hennepin County Surveyor" cast iron monument, down 0.5 feet.

On _____ placed a _____

SKETCH OF REFERENCE TIES



Statements of evidence relative to this corner are on the following page.

I hereby certify that this survey, plan, or report was prepared by me or under my direct supervision, that I am a duly Licensed Land Surveyor under the laws of the state of Minnesota, and that this certificate is correct and complete to the best of my knowledge and belief.

Devin R. Ball 12/15/21

Devin R. Ball
Registered Land Surveyor
Minnesota License No. 56023

Date

OFFICE OF COUNTY SURVEYOR
County of Ramsey

I hereby certify that this document was filed in the County Surveyor's office this 21st day of December, 2021.

Daniel D. Baar

Daniel D. Baar
Ramsey County Surveyor
Minnesota License No. 45816

MONUMENT 372

West Quarter Corner of Section 8, Township 29, Range 23

November 3, 1847	North between Sections 7 & 8. Set 1/4 Section post. Bur Oak 12 N73°W 57 "Do" (Bur Oak) 11 S73°E 95 Isaac N. Higbee, Deputy Surveyor
September, 1899	In establishing the 1/4 Corner between Sections 7 and 8, found both Government trees and also monument set by Hennepin County, tied it. Ramsey County Resurvey
January 27, 1934	Located monument by Don Sandstone. Ramsey County Engineer
June, 1948	Checked monument. Concrete monument. Ramsey County Engineer
1974	Found a cast iron monument. Ramsey County Surveyor's Office
March 12, 1984	Re-tied monument. Ramsey County Surveyor's Office
August 13, 1990	Retied monument. Ramsey County Surveyor's Office
July 6, 1992	Placed sign and post +/-1 ft. north of monument. Ramsey County Surveyor's Office
August 6, 2002	Found cast iron monument down +/-1 ft. and retied. Ramsey County Surveyor's Office
August 29, 2007	Retied monument. Ramsey County Surveyor's Office
May 2, 2011	Found cast iron monument down 0.5 ft. below ground in good condition. Ties remain. Did not re-measure. Hennepin County Surveyor's Office
June 7, 2012	Checked condition of "HENNEPIN COUNTY SURVEYOR" cast iron monument, down 0.5 ft., and it's ties. Ramsey County Surveyor's Office
August 29, 2018	Found a "Hennepin Co. Surveyor" cast iron monument, down 0.5 feet, and inspected ties. Only 1 tie remains due to construction. Ramsey County Surveyor's Office
October 25, 2018	"Found a Hennepin Co. Surveyor" cast iron monument, down 0.5 feet, and recorded new local ties. Ramsey County Surveyor's Office