

MONUMENT 227

CERTIFICATE OF LOCATION OF GOVERNMENT CORNER

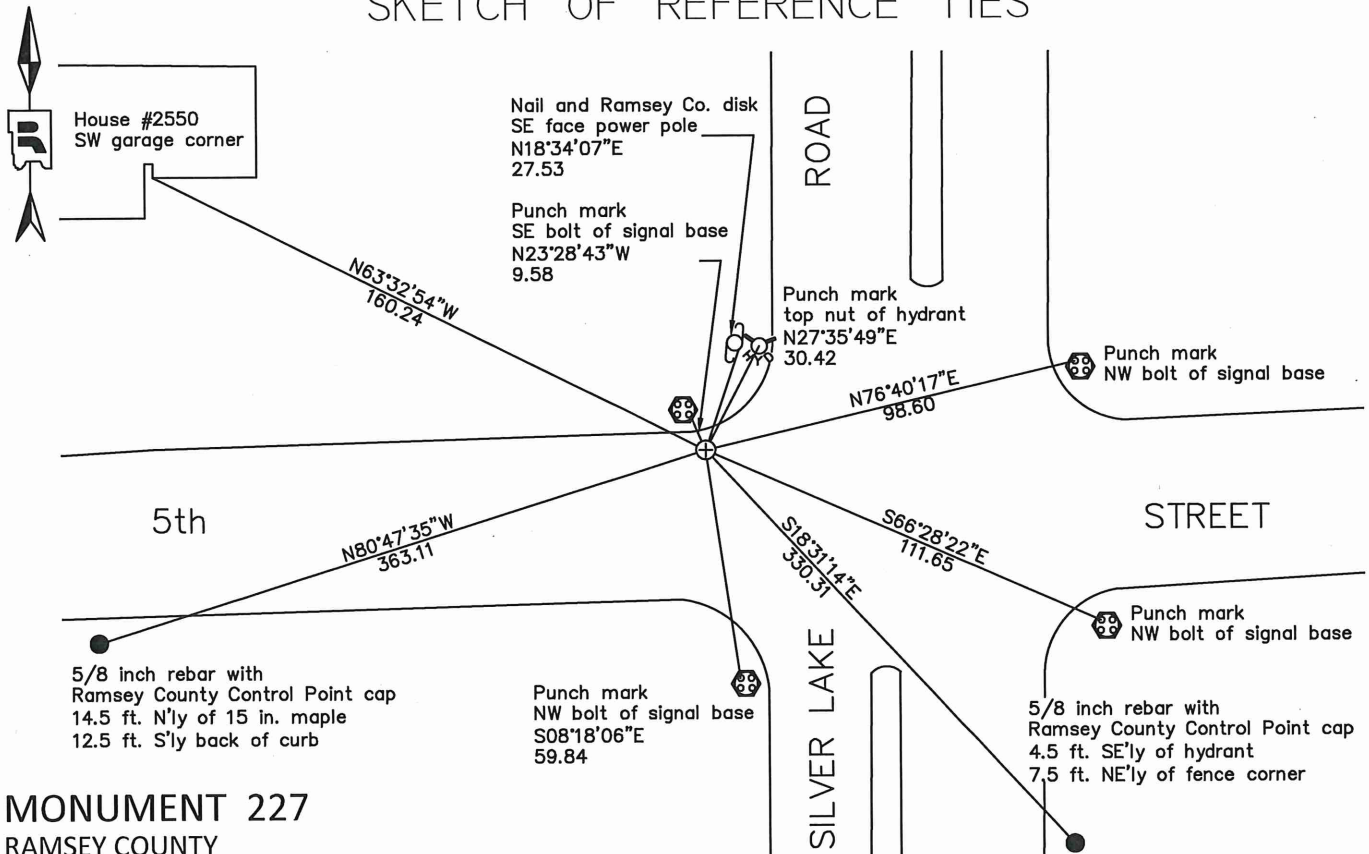
Center of Section 30, Township 30 North, Range 23 West, County of Ramsey, State of Minnesota.

At the corner location shown on the sketch

On May 16, 2019 found a cast iron monument with worn top in bituminous road.

On November 18, 2019 placed a 5/8 inch X 14 inch rebar with 3 inch aluminum cap stamped "Ramsey County Surveyor", flush in new bituminous road.

SKETCH OF REFERENCE TIES



MONUMENT 227

RAMSEY COUNTY
 NAD83 (1986) NAD83 (2011)
 Northing = 197082.214 Northing = 197082.83
 Easting = 542615.409 Easting = 542614.91

ALL DISTANCES ARE SHOWN IN U.S. SURVEY FEET.
 BEARINGS ARE FOR TIE REFERENCE PURPOSES ONLY.

Statements of evidence relative to this corner are on the following page.

I hereby certify that this survey, plan, or report was prepared by me or under my direct supervision, that I am a duly Licensed Land Surveyor under the laws of the state of Minnesota, and that this certificate is correct and complete to the best of my knowledge and belief.

Devin R. Ball 12/15/21

Devin R. Ball Date
 Deputy County Surveyor
 Minnesota License No. 56023

OFFICE OF COUNTY SURVEYOR
 County of Ramsey

I hereby certify that this document was filed in the County Surveyor's office this 21st day of December, 20 21.

Daniel D. Baar

Daniel D. Baar, L.S.
 Ramsey County Surveyor
 Minnesota License No. 45816

MONUMENT 227

Center of Section 30, Township 30, Range 23

Circa 1900	Ramsey County Re-Survey map shows a stone monument set at Center of Section.
March 1933	Checked monument. Ramsey County Engineer
November 1943	Checked monument. Ramsey County Engineer
December 1946	Checked monument. Ramsey County Engineer
April 30, 1957	Registered Land Survey No. 119 shows a stone monument at the Center of Section 30, Township 30 North, Range 23 West.
September 16, 1971	Found cast iron monument and set ties. Unknown source
July 12, 1974	Found a cast iron monument flush and tied. Ramsey County Surveyor's Office
April 1991	Cast iron monument down 0.2 ft. Ramsey County Surveyor's Office
1995	Monument removed during construction. Ramsey County Surveyor's Office
1996	Contractor set manhole. Ramsey County Surveyor's Office
1997	Removed manhole. Ramsey County Surveyor's Office
August 5, 1997	Set a 20 inch cast iron monument flush. Ramsey County Surveyor's Office
November 1, 2002	Tied monument. Ramsey County Surveyor's Office
July 12, 2007	Retied monument. Ramsey County Surveyor's Office
May 25, 2012	Checked condition of cast iron monument and ties. Ramsey County Surveyor's Office
May 16, 2019	Found a cast iron monument with worn top in bituminous road. Checked local ties and established offsets prior to removal during road construction. Ramsey County Surveyor's Office
November 18, 2019	Place a 5/8 inch X 14 inch rebar with 3 inch aluminum cap stamped "Ramsey County Surveyor", flush in new bituminous road using offsets and recorded local ties. Ramsey County Surveyor's Office