

# MONUMENT 210

## CERTIFICATE OF LOCATION OF GOVERNMENT CORNER

South Quarter Corner of Section 23, Township 30 North, Range 23 West, County of Ramsey, State of Minnesota.

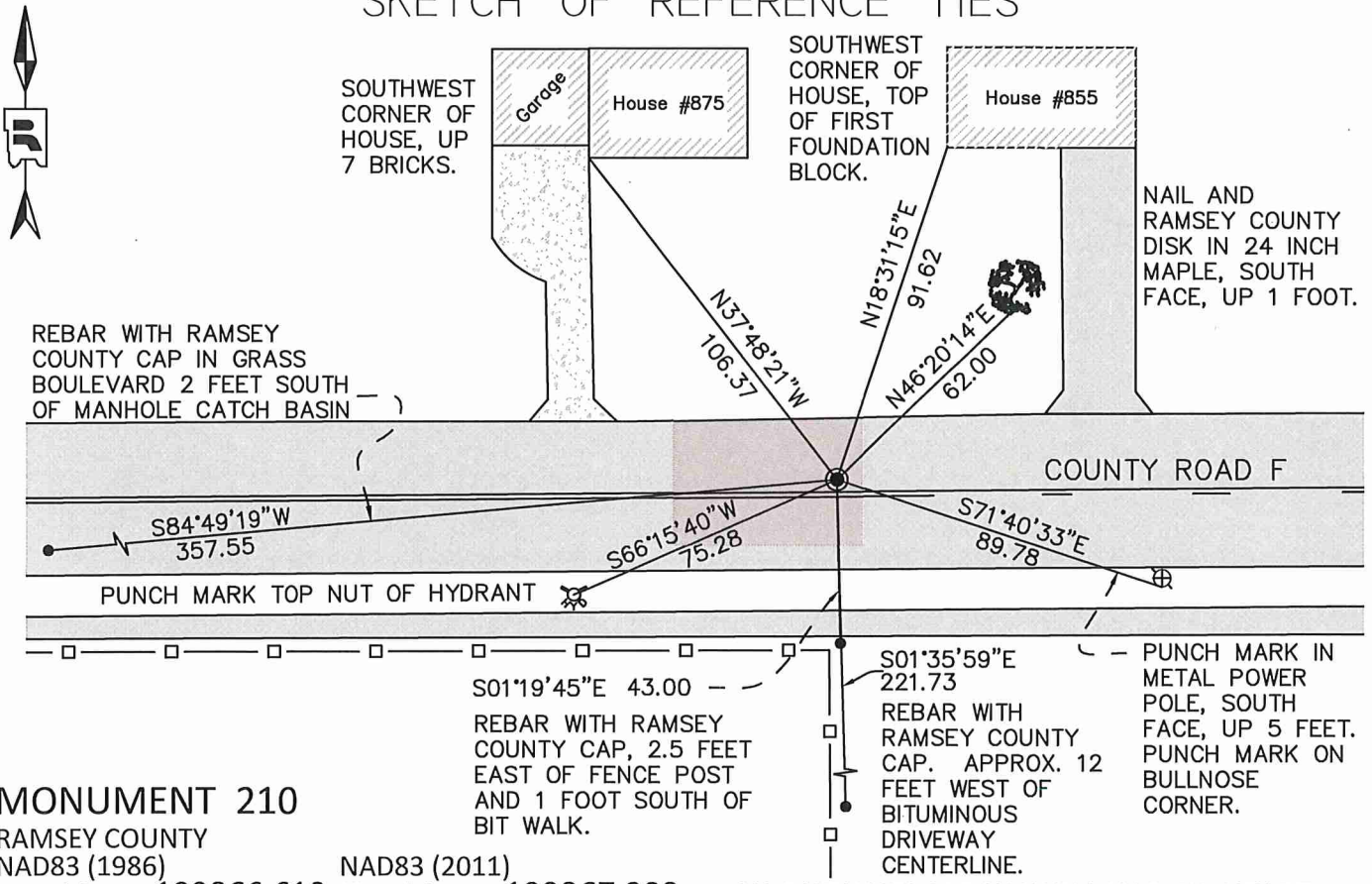
At the corner location shown on the sketch

On September 21, 2017 found a cast iron monument. Contractor removed for road construction.

left monument as found       raised/lowered monument       removed monument (explain)

On September 22, 2017 placed a 20 inch "Ramsey County" cast iron monument with in a manhole assembly. Manhole assembly set by contractor.

### SKETCH OF REFERENCE TIES



ALL DISTANCES ARE SHOWN IN U.S. SURVEY FEET. BEARINGS ARE FOR TIE REFERENCE PURPOSES ONLY.

Statements of evidence relative to this corner are on the following page.

I hereby certify that this survey, plan, or report was prepared by me or under my direct supervision, that I am a duly Licensed Land Surveyor under the laws of the state of Minnesota, and that this certificate is correct and complete to the best of my knowledge and belief.

Daniel D. Baar      4/30/21  
 Daniel D. Baar      Date  
 Ramsey County Surveyor  
 Minnesota License No. 45816

OFFICE OF COUNTY SURVEYOR  
 County of Ramsey

I hereby certify that this document was filed in the County Surveyor's office this 30th day of April, 20 21.

Daniel D. Baar  
 Daniel D. Baar, L.S.  
 Ramsey County Surveyor

# MONUMENT 210

South Quarter Corner of Section 23, Township 30N, Range 23W

December 9, 1847	At 40.01 chains West corrected between Sections 23 and 26, set 1/4 section post. Tied to two bearing trees; White Oak 16 S50E 77 and White Oak 16 N69W 95. Issace Higbee Deputy Surveyor.
November 4, 1895	In establishing the 1/4 corner between sections 23 and 26. Found old stake at 1/4 corner. Government witness trees gone. Retied corner and set granite monument. Ramsey County Re-monumentation Survey.
December, 1943	Checked monument. Ramsey County Engineer's Office.
May 31, 1974	Found granite monument down 0.1 feet on centerline of County Road. F. Ramsey County Surveyor's Office.
October 23, 1974	Retied monument. Ramsey County Surveyor's Office.
February 1, 1991	Retied monument. Ramsey County Surveyor's Office.
Date Unknown	Monument removed for construction. Ramsey County Surveyor's Office.
June 11, 1996	Placed 20 inch cast iron monument in concrete. Ramsey County Surveyor's Office.
June 14, 1996	Retied monument. Ramsey County Surveyor's Office.
September 9, 2003	Retied monument. Ramsey County Surveyor's Office.
September 8, 2006	Monument re-concreted. Ramsey County Surveyor's Office.
November 10, 2008	Retied monument. Ramsey County Surveyor's Office.
April 24, 2013	Found Ramsey County cast iron monument flush in bituminous road. Checked ties. Ramsey County Surveyor's Office.
May, 2017	Set monument offsets prior to removal due to road construction. Exact date unknown. Ramsey County Surveyor's Office.
September 21, 2017	Contractor removed cast iron monument for road construction. Ramsey County Surveyor's Office.
September 22, 2017	Placed 20 inch "Ramsey County" cast iron monument in manhole assembly and retied. Contractor set manhole assembly. Ramsey County Surveyor's Office.