

MONUMENT 18

CERTIFICATE OF LOCATION OF FOUND MONUMENT

NOTE: TWO LOCATIONS FOR THIS CORNER HAVE BEEN PERPETUATED (SEE BELOW)

North Quarter of Section 4, Township 30 North, Range 22 West, County of Ramsey, State of Minnesota.

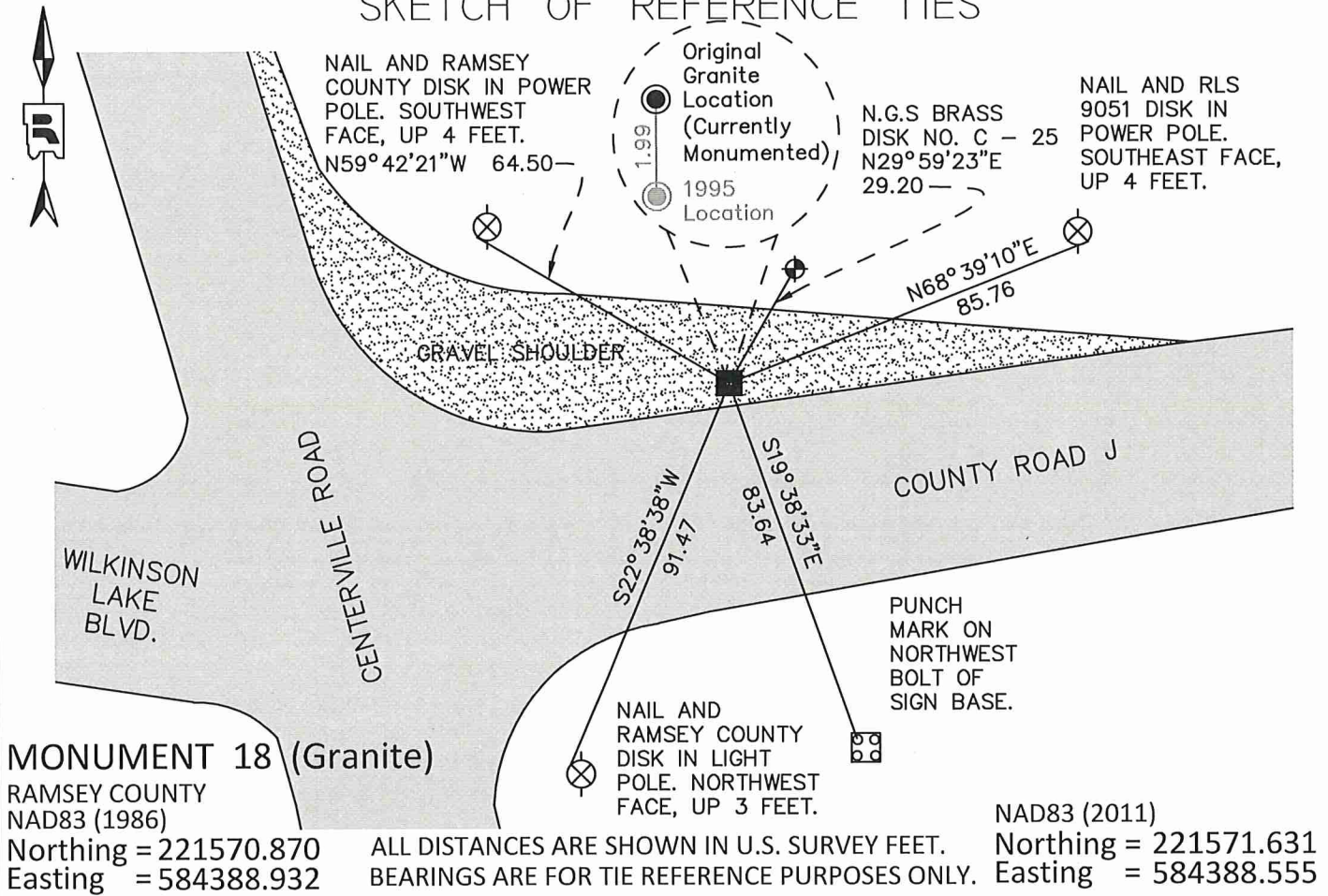
At the corner location shown on the sketch

On August 31, 2020 found granite monument within cast iron man hole assembly.

left monument as found raised/lowered monument removed monument (explain)

On _____ placed a _____

SKETCH OF REFERENCE TIES



Statements of evidence relative to this corner are on the following page.

I hereby certify that this survey, plan, or report was prepared by me or under my direct supervision, that I am a duly Licensed Land Surveyor under the laws of the state of Minnesota, and that this certificate is correct and complete to the best of my knowledge and belief.

Daniel D. Baar 8/24/21
 Daniel D. Baar Date
 Ramsey County Surveyor
 Minnesota License No. 45816

OFFICE OF COUNTY SURVEYOR
 County of Ramsey

I hereby certify that this document was filed in the County Surveyor's office this 24th day of August, 20 21.

Daniel D. Baar
 Daniel D. Baar, L.S.
 Ramsey County Surveyor

MONUMENT 18

North Quarter Corner of Section 4, Township 30N, Range 22W

October 16, 1847	At 40.0 chains West between Sections 4 and 33 set post at quarter section corner. Tied to two bearing trees; Bur Oak 10 N86 E94 and Bur Oak 8 S61 E54. John M. Marsh Deputy Surveyor.
1902	Found old iron set by the State. No government witness trees. No ties found. Ramsey County Engineering Office.
November, 1954	Checked monument. Ramsey County Engineering Office.
April, 1965	Checked Granite monument. Ramsey County Engineering Office.
November, 1966	Checked monument. Ramsey County Engineering Office.
April 15, 1974	Found granite monument down 0.2 feet. Ramsey County Surveyor's Office.
July 3, 1974	Retied monument. Set cast iron cap over granite. Ramsey County Surveyor's Office.
November 2, 1988	Cast iron cap missing. Ramsey County Surveyor's Office.
October 10, 1991	Granite ground down by construction department. Ramsey County Surveyor's Office.
November 22, 1992	Drilled hole in granite; down 0.3 feet. Ramsey County Surveyor's Office.
July 26, 1995	Set 20 inch cast iron monument marked "3rd Correction Line" 1.99 feet South of original granite monument. Ramsey County Surveyor's Office.
June 17, 1998	Found granite monument. 20 inch cast iron monument gone. Ramsey County Surveyor's Office.
August, 1999	Set 20 inch cast iron monument in manhole assembly down +/- 18 inches at 1995 position. Ramsey County Surveyor's Office.
November 15, 1999	Retied monument at 1995 position. Ramsey County Surveyor's Office.
October 14, 2003	Drilled hole in granite monument down +/- 0.4 feet and in cast iron monument. Ramsey County Surveyor's Office.
June 16, 2004	Retied monument at 1995 position. Ramsey County Surveyor's Office.
September 4, 2009	Found a cast iron monument within a cast iron manhole assembly. Retied monument at 1995 position. Ramsey County Surveyor's Office.

MONUMENT 18

North Quarter Corner of Section 4, Township 30N, Range 22W

May 16, 2014

Found a cast iron monument within a cast iron manhole assembly at 1995 position. Checked ties using certificate of location, dated September 04, 2009. All ties present and in good condition. Ramsey County Surveyor's Office.

June 20, 2017

Found granite monument down +/- 10 inches. Performed static GPS observation on monument to obtain NAD83 (2011) coordinates. The cast iron monument marking the 1995 position was removed during road construction and a cast iron manhole assembly was placed over the granite monument by others. Ramsey County Surveyor's Office.

July 6, 2017

Found granite monument in manhole assembly. Retied monument. Ramsey County Surveyor's Office.

August 31, 2020

Checked monument and condition of ties; all in and accounted for. Ramsey County Surveyor's Office