

MONUMENT 15

CERTIFICATE OF LOCATION OF GOVERNMENT CORNER

NOTE: TWO LOCATIONS FOR THIS CORNER HAVE BEEN PERPETUATED (SEE BELOW)
 Northeast Corner of Section 6, Township 30 North, Range 22 West, County of Ramsey, State of Minnesota.

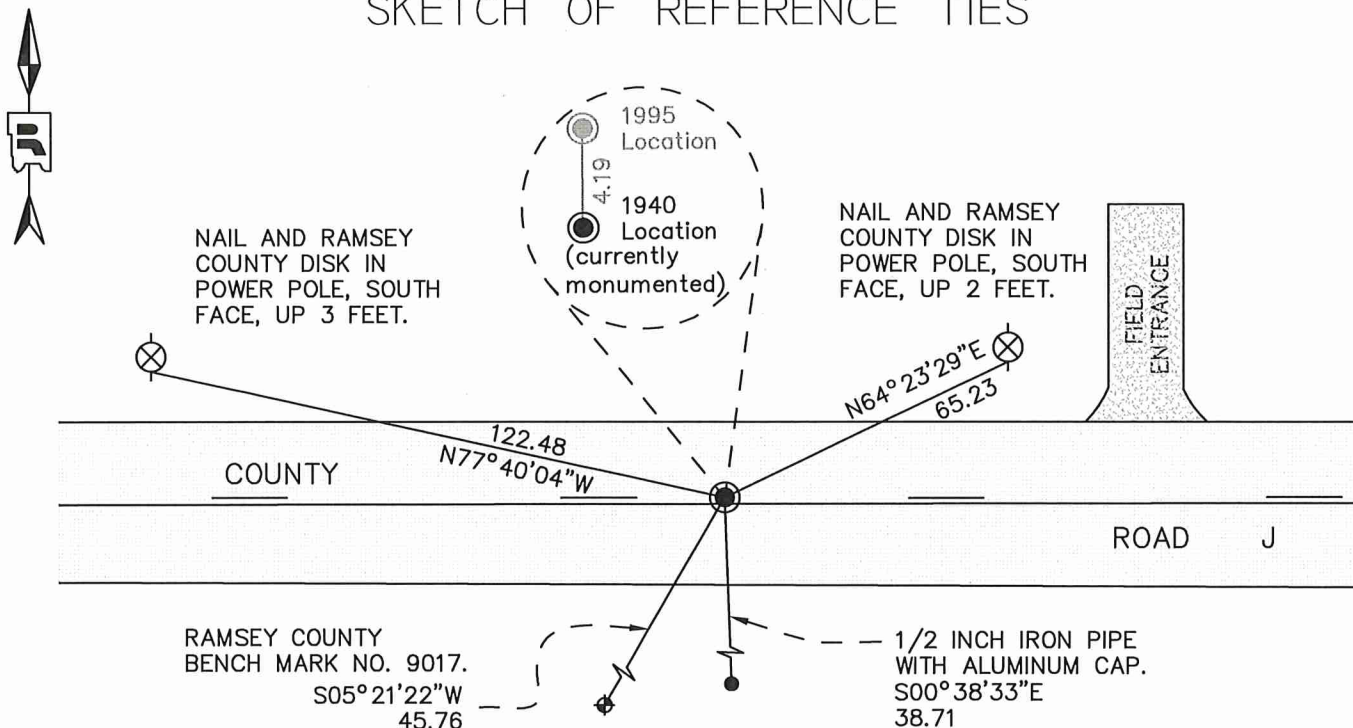
At the corner location shown on the sketch

On _____ found _____

left monument as found raised/lowered monument removed monument (explain)

On July 14, 2017 placed a 20 inch "Ramsey County" cast iron monument within a manhole assembly at the 1940 granite monument location.

SKETCH OF REFERENCE TIES



MONUMENT 15 (1940 Granite Location)

RAMSEY COUNTY
 NAD83 (1986) NAD83 (2011)
 Northing = 221535.410 Northing = 221536.367
 Easting = 576530.081 Easting = 576529.554

ALL DISTANCES ARE SHOWN IN U.S. SURVEY FEET.
 BEARINGS ARE FOR TIE REFERENCE PURPOSES ONLY.

Statements of evidence relative to this corner are on the following page.

I hereby certify that this survey, plan, or report was prepared by me or under my direct supervision, that I am a duly Licensed Land Surveyor under the laws of the state of Minnesota, and that this certificate is correct and complete to the best of my knowledge and belief.

Daniel D. Baar 8/17/21
 Daniel D. Baar Date
 Ramsey County Surveyor
 Minnesota License No. 45816

OFFICE OF COUNTY SURVEYOR
 County of Ramsey

I hereby certify that this document was filed in the County Surveyor's office this 21st day of August, 20 21.

Daniel D. Baar
 Daniel D. Baar, L.S.
 Ramsey County Surveyor

MONUMENT 15

Northeast Corner of Section 6, Township 30N, Range 22W

December 4, 1847	Intersect 3rd correction line 18.30 links East of the 1/4 Section Corner on South side of Sec. 33, T 31 N, R 22 W, 4th Meridian. Set post corner to Sections 5 and 6. White Oak 12 S17W 1.50 Bur Oak 8 S21E 62. Isaac Higbee, Deputy Surveyor
June 5, 1940	Found stake. Placed monument. Ramsey County Engineer's Office
April, 1965	Found granite monument. Ramsey County Engineer's Office
May 15-16, 1974	Found granite monument tipped, down 0.3 feet. Also found 2 PK nails and a nail and disk, none of them were located over the tipped granite (all were East of the tipped granite monument). Dug granite monument up and uprighted, but does not fit ties. Uprighting the granite monument moved the top of the monument to the East. Ramsey County Surveyor's Office
July 25, 1975	Placed cast iron cap. Ramsey County Surveyor's Office
March 22, 1976	Retied monument. Ramsey County Surveyor's Office
April, 1990	Tied monument for road construction. Ramsey County Surveyor's Office
May, 1990	Removed cast iron cap. Ramsey County Surveyor's Office
September 5, 1990	Placed 20 inch cast iron monument. Ramsey County Surveyor's Office
January 27, 1993	Retied monument. Ramsey County Surveyor's Office
July 27, 1995	Set a 20 inch cast iron monument marked "3rd Correction Line" 4.19 feet north of original granite monument location. Monument set at the intersection of a line from the South Quarter Corner of Sec. 33, T31N, R22W to the Southeast Corner of Sec. 33, T31N, R22N with the East line of Sec. 6, T30N, R22W. Ramsey County Surveyor's Office
September 25, 1998	Tied "3rd Correction Line" monument. Ramsey County Surveyor's Office
October 11, 2005	Retied "3rd Correction Line" monument. Ramsey County Surveyor's Office
July 13, 2010	Found cast iron monument marked "3rd Correction Line" and retied. Ramsey County Surveyor's Office
September 10, 2015	Retied "3rd Correction Line" monument. Ramsey County Surveyor's Office
May 8, 2017	Set monument offsets for the 1940 granite location prior to removal for road construction. Ramsey County Surveyor's Office

MONUMENT 15

Northeast Corner of Section 6, Township 30N, Range 22W

- | | |
|-----------------|---|
| Summer, 2017 | Cast iron monuments marking both the 1940 and 1995 locations removed by contractor due to road construction. Exact date unknown.
Ramsey County Surveyor's Office |
| July 14, 2017 | Placed a 20 inch "Ramsey County" cast iron monument within a manhole assembly at the 1940 granite location and tied monument.
Ramsey County Surveyor's Office |
| August 31, 2020 | Checked monument; all ties present. Ramsey County Surveyor's Office |