

MONUMENT 13

CERTIFICATE OF LOCATION OF GOVERNMENT CORNER

NOTE: TWO LOCATIONS FOR THIS CORNER HAVE BEEN PERPETUATED (SEE BELOW)

Northwest Corner of Section 6, Township 30 North, Range 22 West, County of Ramsey, State of Minnesota.

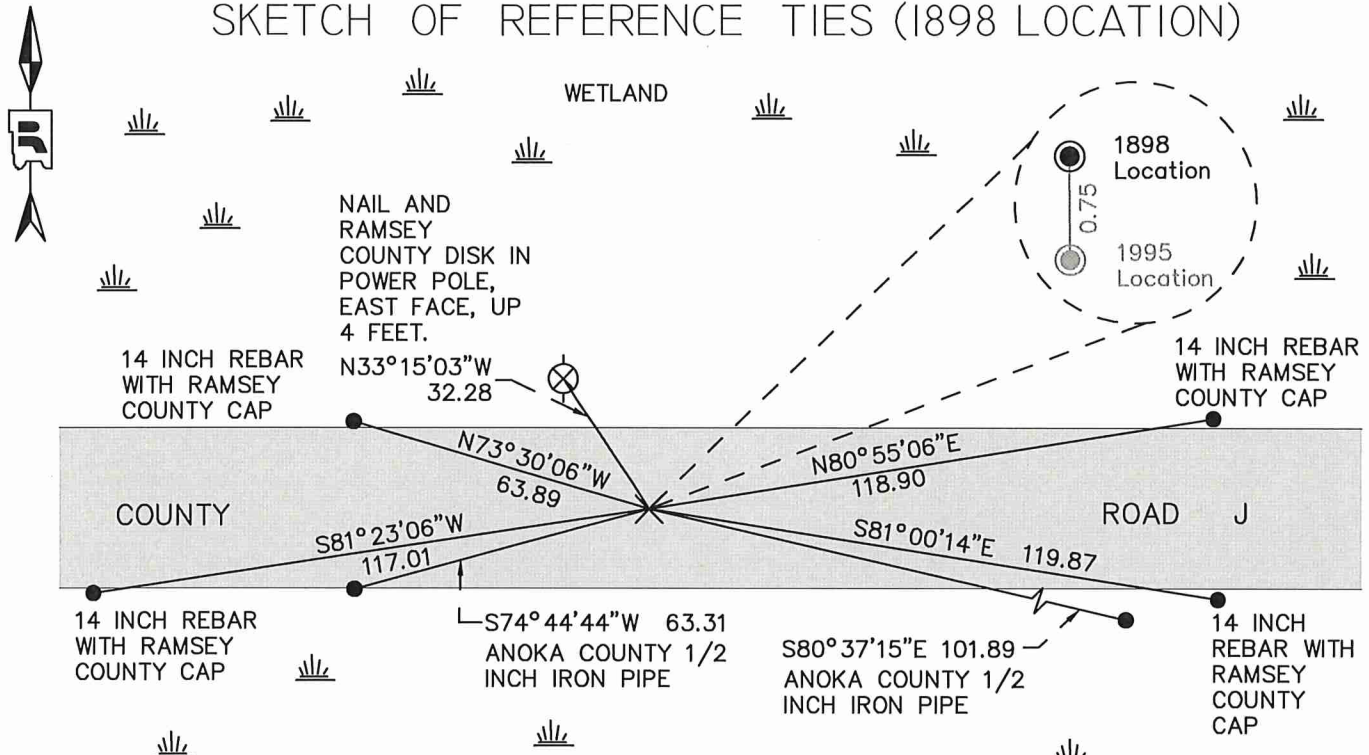
At the corner location shown on the sketch

On August 31, 2020 found Ramsey County cast iron monument within manhole assembly.

left monument as found raised/lowered monument removed monument (explain)

On _____ placed a _____

SKETCH OF REFERENCE TIES (1898 LOCATION)



MONUMENT 13 (1898 Location) WETLAND

RAMSEY COUNTY

NAD83 (1986)

NAD83 (2011)

Northing = 221537.976 Northing = 221537.782

Easting = 571327.275 Easting = 571326.758

ALL DISTANCES ARE SHOWN IN U.S. SURVEY FEET.
BEARINGS ARE FOR TIE REFERENCE PURPOSES ONLY.

Statements of evidence relative to this corner are on the following page.

I hereby certify that this survey, plan, or report was prepared by me or under my direct supervision, that I am a duly Licensed Land Surveyor under the laws of the state of Minnesota, and that this certificate is correct and complete to the best of my knowledge and belief.

Daniel D. Baar 7/6/21
Date

Daniel D. Baar
Ramsey County Surveyor
Minnesota License No. 45816

OFFICE OF COUNTY SURVEYOR
County of Ramsey

I hereby certify that this document was filed in the County Surveyor's office this 6th day of July, 2021.

Daniel D. Baar

Daniel D. Baar, L.S.
Ramsey County Surveyor

MONUMENT 13

Northwest Corner of Section 6, Township 30 North, Range 22 West

October 19, 1847	86.50 chains to Third Correction Line 19 chains 50 links East of quarter section corner on South side Section 32 T31N R22W Set post for corner to T30N Range 22 and 23 W. Tied to two bearing trees; Aspen 8 S1 E304 and Aspen 8 S1 W330. James M. Marsh Deputy Surveyor.
May, 1898	Found Iron monument at NW Corner of Section 6. Set by State. Ramsey County Re-monumentation Survey.
December, 1943	Checked monument. Ramsey County Engineer's Office.
February, 1946	Checked monument. Ramsey County Engineer's Office.
April, 1950	Checked monument. Ramsey County Engineer's Office.
May, 1952	Checked monument. Ramsey County Engineer's Office.
April, 1965	Checked monument. Ramsey County Engineer's Office.
August 27, 1974	Found 3/4 inch iron in concrete. Dug down 1.2 feet and found 2 inch square iron with flange. down +/- 3.5 feet. Ramsey County Surveyor's Office.
August 28, 1974	Placed cast iron monument over 2 inch square iron with cement to steady cast at base. Ramsey County Surveyor's Office.
October 25, 1974	Retied monument. Ramsey County Surveyor's Office.
June 28, 1985	Placed 4.5 inch cast iron monument. 2 inch square iron down 1.15 feet. Ramsey County Surveyor's Office.
April 1990	Tied monument for construction removal. Ramsey County Surveyor's Office.
May 31, 1990	Removed short cast iron monument. Ramsey County Surveyor's Office.
October 30, 1990	Placed short cast iron (4 5/8 inch) monument in quick set 45 cement and rock. Ramsey County Surveyor's Office.
January 27, 1993	Retied monument. Ramsey County Surveyor's Office.
July 26, 1995	Set 20 inch cast iron monument marked "3rd Correction Line" 0.75 feet South of August 28, 1898 location.
Summer 1998	Maintenance Department filled 1.2 feet over roadway.
July 25, 2005	Maintenance Department set 27 inch manhole assembly over monument (down 1.2 feet in old pavement).

MONUMENT 13

Northwest Corner of Section 6, Township 30 North, Range 22 West

July 3, 2007	Retied monument. Ramsey County Surveyor's Office.
June 12, 2017	Retied cast iron monument and ran static GPS observations on both monuments (1898 and 1995) to obtain NAD83 (2011) coordinates. Ramsey County Surveyor's Office.
August 31, 2020	Check monument and ties; all ties in and in good condition. Ramsey County Surveyor's Office.