

MONUMENT 11

CERTIFICATE OF LOCATION OF GOVERNMENT CORNER

NOTE: TWO LOCATIONS FOR THIS CORNER HAVE BEEN PERPETUATED (SEE BELOW)

Northeast Corner of Section 2, Township 30 North, Range 22 West, County of Ramsey, State of Minnesota.

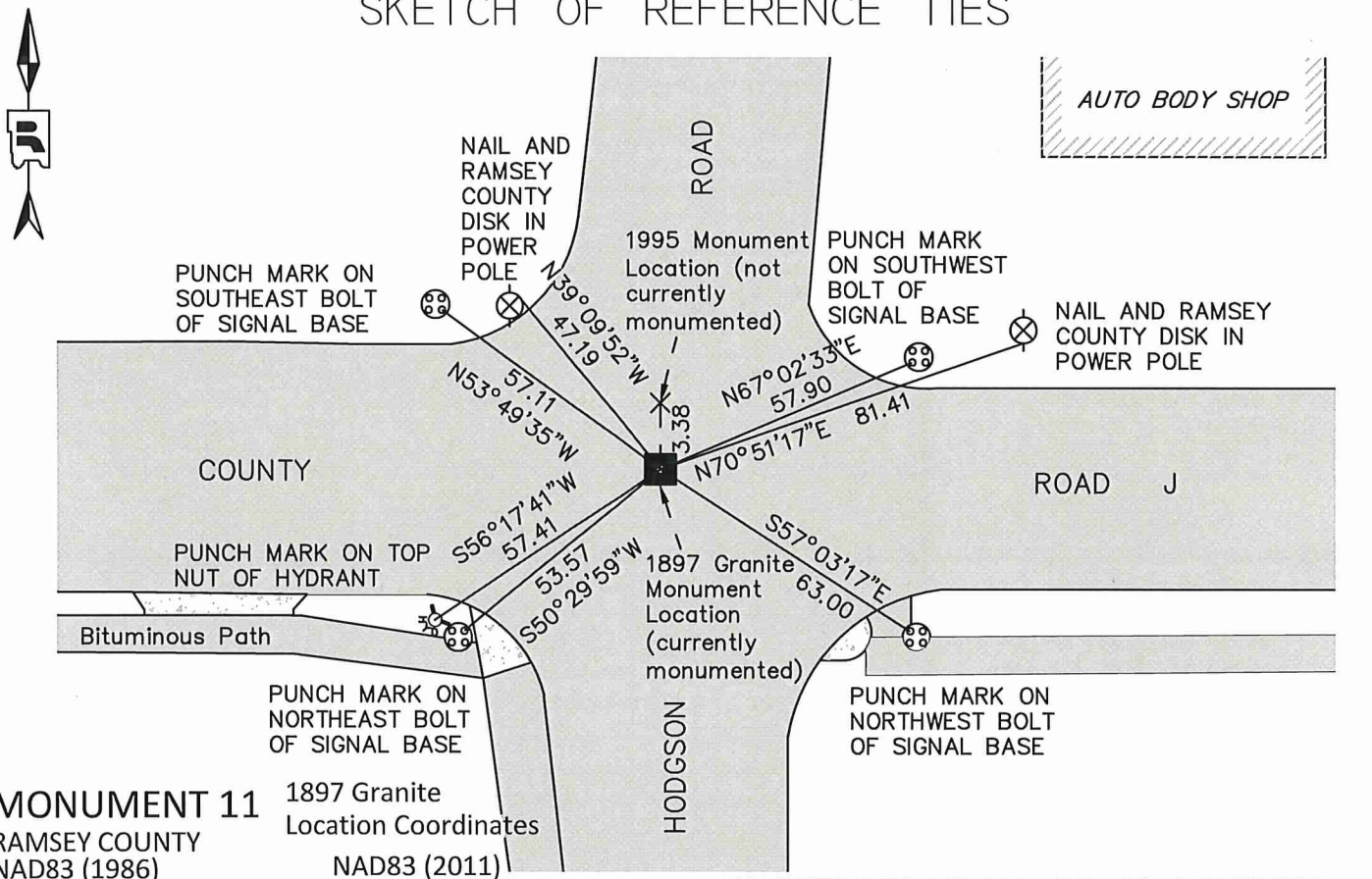
At the corner location shown on the sketch

On June 13, 2017 found short cast iron monument over granite monument. Removed cast iron monument for road construction. Retied granite monument and set cast iron manhole assembly over monument.

left monument as found raised/lowered monument removed monument (explain)

On _____ placed a _____

SKETCH OF REFERENCE TIES



MONUMENT 11 1897 Granite
 RAMSEY COUNTY Location Coordinates
 NAD83 (1986) NAD83 (2011)
 Northing = 221529.391 Northing = 221526.616
 Easting = 566048.900 Easting = 566048.544

ALL DISTANCES ARE SHOWN IN U.S. SURVEY FEET.
 BEARINGS ARE FOR TIE REFERENCE PURPOSES ONLY.

Statements of evidence relative to this corner are on the following page.

I hereby certify that this survey, plan, or report was prepared by me or under my direct supervision, that I am a duly Licensed Land Surveyor under the laws of the state of Minnesota, and that this certificate is correct and complete to the best of my knowledge and belief.

Daniel D. Baar 3/29/21
 Daniel D. Baar Date
 County Surveyor
 Minnesota License No. 45816

OFFICE OF COUNTY SURVEYOR
 County of Ramsey

I hereby certify that this document was filed in the County Surveyor's office this 29th day of March, 2021.

Daniel D. Baar
 Daniel D. Baar, L.S.
 Ramsey County Surveyor

MONUMENT 11

Northeast Corner of Section 2, Township 30 North, Range 23 West

December 16, 1847	At 88.08 chains intersected 3rd correction line; 19 chains East of Quarter Section Corner on South line, Section 31, T 31N, R22W 4th P.M. and set post corner to Section 1 and 2. Tied to two bearing trees; Bur Oak 12 S30 E28 and Bur Oak 10 S73 W34. Isaac Higbee, Deputy Surveyor.
July 22, 1896	Found old stake. Government witness trees gone. Ramsey County Re-monumentation Survey.
August 9, 1897	Set monument. Ramsey County Re-monumentation Survey.
December, 1943	Checked monument. Ramsey County Engineering Office.
January, 1946	Checked monument. Ramsey County Engineering Office.
November, 1950	Checked monument. Ramsey County Engineering Office.
March, 1952	Checked monument. Ramsey County Engineering Office.
October, 1965	Checked monument. Ramsey County Engineering Office.
July 23, 1975	Found iron in concrete; granite monument down 0.31 feet; placed cast iron cap and bolt monument. Ramsey County Surveyor's Office.
July 29, 1975	Retied monument. Ramsey County Surveyor's Office.
February 20, 1992	Retied cast iron monument. Ramsey County Surveyor's Office.
August 23, 1995	Cap and bolt removed by MnDOT in the summer of 1995; dug +/- 5 inches and found granite monument. Set a short cast iron monument; placed P.K nails for "3rd Correction Line" monument, 3.38 feet Northerly. Ramsey County Surveyor's Office.
October 18, 1996	Set a cast iron monument marked "3rd Correction Line" 3.38 feet Northerly of the original 1897 granite location. Ramsey County Surveyor's Office.
October 8 1998	Tied 1995 monument. Ramsey County Surveyor's Office.
June 15, 2004	Retied 1995 monument. Ramsey County Surveyor's Office.
September 21, 2009	Found cast iron monument down 0.15 feet. Retied 1995 monument. Ramsey County Surveyor's Office.

MONUMENT 11

Northeast Corner of Section 2, Township 30 North, Range 23 West

- April 22, 2014 Found cast iron monument at 1995 location, down 0.15 feet. Checked ties using certificate of location, dated September 21, 2009. All ties present and in good condition. Ramsey County Surveyor's Office.
- May 8, 2017 Found cast iron monument down 0.10 feet at 1995 location. Offset monument for removal during road reconstruction. Checked ties. Ramsey County Surveyor's Office.
- June 13, 2017 Short cast iron monument at 1897 location removed for road construction. Found granite monument underneath cast iron monument. Tied granite monument and set cast iron manhole assembly over monument; granite approximately 6 inches below manhole. Ramsey County Surveyor's Office.
- June 26, 2017 Performed Static GPS observation on monument to obtain NAD83 (2011) coordinates. Ramsey County Surveyor's Office.
- June 24, 2020 Granite monument (at 1897 location) under cast iron manhole assembly in place. All ties found and in good condition. Ramsey County Surveyor's Office.