

MONUMENT 738

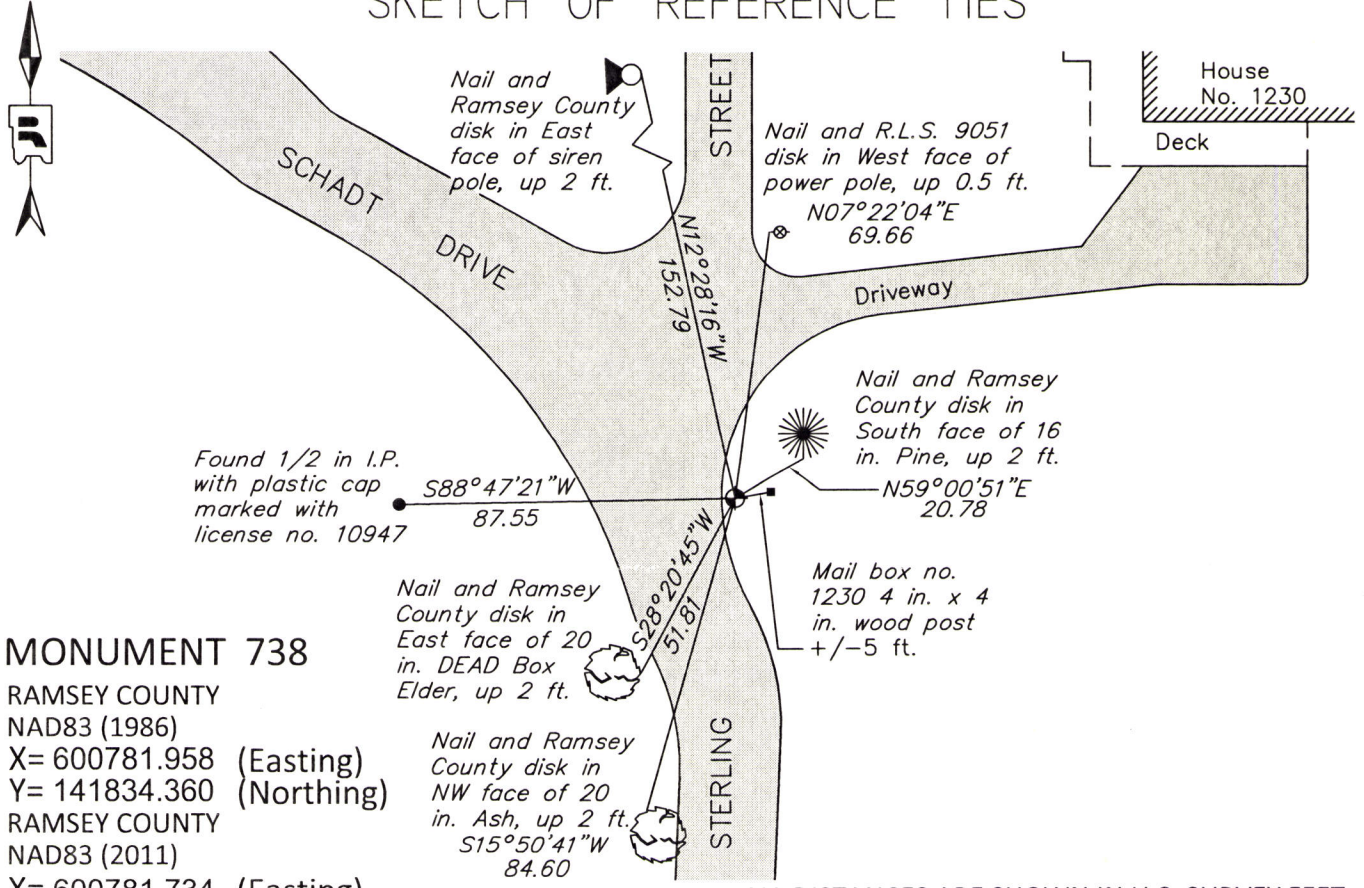
CERTIFICATE OF LOCATION OF GOVERNMENT CORNER

North Quarter Corner of Section 24, Township 28 North, Range 22 West, County of Ramsey, State of Minnesota.

At the corner location shown on the sketch

- On May 17, 2016 found a cast iron monument, flush. Tied monument for removal during road reconstruction.
- left monument as found
 raised/lowered monument
 removed monument (explain)
- On August 25, 2016 placed a 20 inch "Ramsey County" cast iron monument, down 0.2 ft., in gravel shoulder using construction ties and local ties.

SKETCH OF REFERENCE TIES



MONUMENT 738

RAMSEY COUNTY
 NAD83 (1986)
 X= 600781.958 (Easting)
 Y= 141834.360 (Northing)
 RAMSEY COUNTY
 NAD83 (2011)
 X= 600781.734 (Easting)
 Y= 141835.109 (Northing)

Found 1/2 in I.P. with plastic cap marked with license no. 10947
 S88°47'21"W
 87.55

Nail and Ramsey County disk in East face of 20 in. DEAD Box Elder, up 2 ft.

Nail and Ramsey County disk in NW face of 20 in. Ash, up 2 ft.
 S15°50'41"W
 84.60

Nail and R.L.S. 9051 disk in West face of power pole, up 0.5 ft.
 N07°22'04"E
 69.66

Nail and Ramsey County disk in South face of 16 in. Pine, up 2 ft.
 N59°00'51"E
 20.78

Mail box no. 1230 4 in. x 4 in. wood post +/-5 ft.

ALL DISTANCES ARE SHOWN IN U.S. SURVEY FEET.
 BEARINGS ARE FOR TIE REFERENCE PURPOSES ONLY.

Statements of evidence relative to this corner are on the following page.

I hereby certify that this survey, plan, or report was prepared by me or under my direct supervision, that I am a duly Licensed Land Surveyor under the laws of the state of Minnesota, and that this certificate is correct and complete to the best of my knowledge and belief.

Daniel D. Baar 4-25-17
 Daniel D. Baar Date
 Deputy County Surveyor
 Minnesota License No. 45816

OFFICE OF COUNTY SURVEYOR
 County of Ramsey

I hereby certify that this document was filed in the County Surveyor's office this 25th day of April, 20 17.

Craig W. Hinzman
 Craig W. Hinzman, L.S.
 Ramsey County Surveyor

MONUMENT 738

North Quarter Corner of Section 24, Township 28, Range 22

October 27, 1847	Set 1/4 Section Corner, Burr Oak 10 S16°E 13, Burr Oak 14 N63°W 2.37. Isaac Higbee, Deputy Surveyor
August 26, 1897	The 1/4 Corner between Sections 13 and 24 was fixed; no Government trees. Ramsey County Re-monumentation Survey
November 14, 1918	Tied. Ramsey County Resurvey
September 4, 1934	Checked monument. Ramsey County Engineering Office
February, 1944	Checked monument. Ramsey County Engineering Office
May, 1946	Checked monument. Ramsey County Engineering Office
April, 1967	Checked monument. Ramsey County Engineering Office
August 6, 1974	Found a cast iron monument, down 6 inches and retied. Frank Kvidera, of the County Highway Department, notes show granite monument underneath a cast iron monument marked "MINN HWY. DEPT. MONU.." Ramsey County Surveyor's Office
August 9, 1989	Monument covered by 4 in. of bituminous. Set P.K. nails; monument down +/-0.6 ft. Ramsey County Surveyor's Office
January 7, 2003	Tied monument, flush. Ramsey County Surveyor's Office
May 21, 2008	Retied cast iron monument, flush in bituminous road. Ramsey County Surveyor's Office
April 25, 2013	Checked "RAMSEY COUNTY" cast iron monument, flush in bituminous road, and ties. Ramsey County Surveyor's Office
May 17, 2016	Found a cast iron monument, flush. Offset monument and retied monument in preparation for road construction. Ramsey County Surveyor's Office
August 25, 2016	Placed a "RAMSEY COUNTY" cast iron monument, down 0.2 ft., using construction ties and local ties. Field crew reported searching for granite monument by probing location to a depth of 32 inches prior to setting cast iron monument. Ramsey County Surveyor's Office