

MONUMENT 581

CERTIFICATE OF LOCATION OF GOVERNMENT CORNER

Northeast Corner of Section 5, Township 28 North, Range 23 West, County of Ramsey, State of Minnesota.

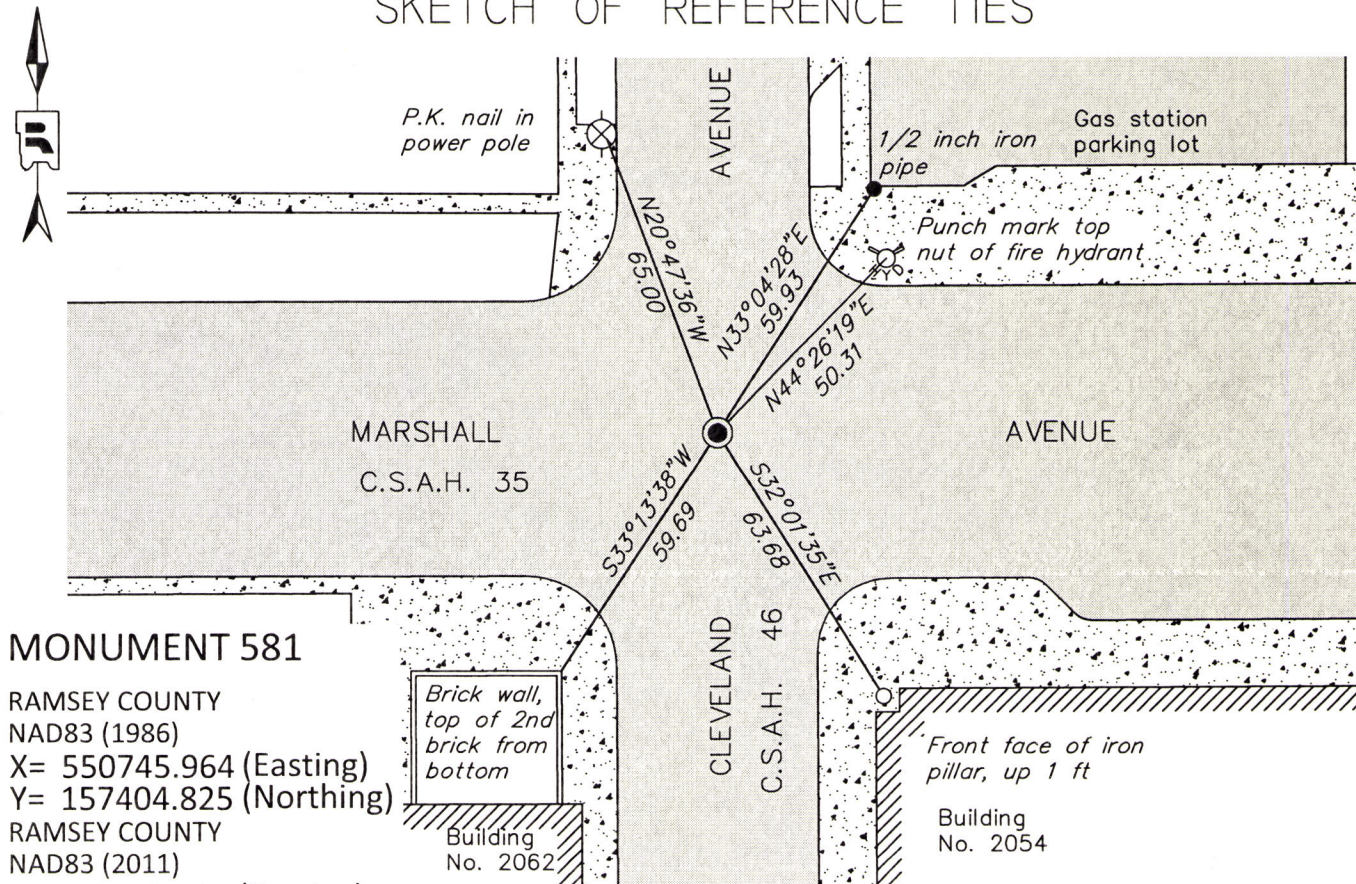
At the corner location shown on the sketch

On May 26, 2016 found a PK nail set at monument location, tied for removal during road reconstruction.

left monument as found raised/lowered monument removed monument (explain)

On July 29, 2016 placed a 20 inch "Ramsey County" Cast Iron Monument, flush in bituminous road; tied monument.

SKETCH OF REFERENCE TIES



MONUMENT 581

RAMSEY COUNTY
NAD83 (1986)
X= 550745.964 (Easting)
Y= 157404.825 (Northing)
RAMSEY COUNTY
NAD83 (2011)
X= 550745.431 (Easting)
Y= 157405.238 (Northing)

ALL DISTANCES ARE SHOWN IN U.S. SURVEY FEET.
BEARINGS ARE FOR TIE REFERENCE PURPOSES ONLY.

Statements of evidence relative to this corner are on the following page.

I hereby certify that this survey, plan, or report was prepared by me or under my direct supervision, that I am a duly Licensed Land Surveyor under the laws of the state of Minnesota, and that this certificate is correct and complete to the best of my knowledge and belief.

Daniel D. Baar 4-25-17
Date
Deputy County Surveyor
Minnesota License No. 45816

OFFICE OF COUNTY SURVEYOR
County of Ramsey

I hereby certify that this document was filed in the County Surveyor's office this 25th day of April, 20 17.

Craig W. Hinzman
Craig W. Hinzman, L.S.
Ramsey County Surveyor

MONUMENT 581

Northeast Corner of Section 5, Township 28, Range 23

October 7, 1847	Set post at corner of Sections 4. 5. 32 & 33, Bur Oak 11 N 86° E 158, no other near. James M Marsh, Deputy Surveyor
March 4, 1889	Monument reset after grading. G. Saulez, City of St. Paul
June 23, 1972	Set Cast Iron monument over Granite Monument, which is down 0.4 ft. Mitchell, Weber, Larson, Rund, City of St. Paul Surveyor's Office
Unknown Date, 1985	Historic, one time only GPS survey. City of St. Paul Surveyor's Office
Unknown Date, 1985	Cast Iron Monument over Granite Mon. City of St. Paul Surveyor's Office
May, 1993	Placed a Cast Iron Monument to grade, placed ties. William J. Cutting signed certificate July 2, 1993, City of St. Paul Surveyor's Office
September 21, 1995	Found Cast Iron Monument, marked for painting target for 1996 aerial. See Yellow Tie Book. City of St. Paul Surveyor's Office
March 22, 1996	Found Cast Iron Monument, marked for painting target for 1996 aerial. See Yellow Tie Book. City of St. Paul Surveyor's Office
March, 2000	Found Cast Iron Monument, marked for painting target for 2000 aerial. City of St. Paul Surveyor's Office
June 11, 2008	Photos taken. City of St. Paul Surveyor's Office
February 27, 2013	Found a Cast Iron Monument at grade, measured with Trimble GPS, removed to install new sewer structure. Samuel D. Gibson, Chief Surveyor City of St. Paul, signed certificate April 3, 2014.
April 11, 2013	Placed a PK at temporary GPS position with new ties. Samuel D. Gibson, Chief Surveyor, City of Saint Paul.
May 26, 2016	Found PK nail in bituminous road at location of monument. Placed construction ties on PK nail and retied PK nail in preparation for placement of new cast iron monument during road reconstruction of Cleveland Avenue. Ramsey County Surveyor's Office
July 29, 2016	Placed a new 20 inch "Ramsey County" cast iron monument to grade using construction ties set May 26, 2016 and local ties measured May 26, 2016. Retied monument. Ramsey County Surveyor's Office