

MONUMENT 54

CERTIFICATE OF LOCATION OF FOUND MONUMENT

North Quarter Corner of Section 8, Township 30 North, Range 23 West, County of Ramsey, State of Minnesota.

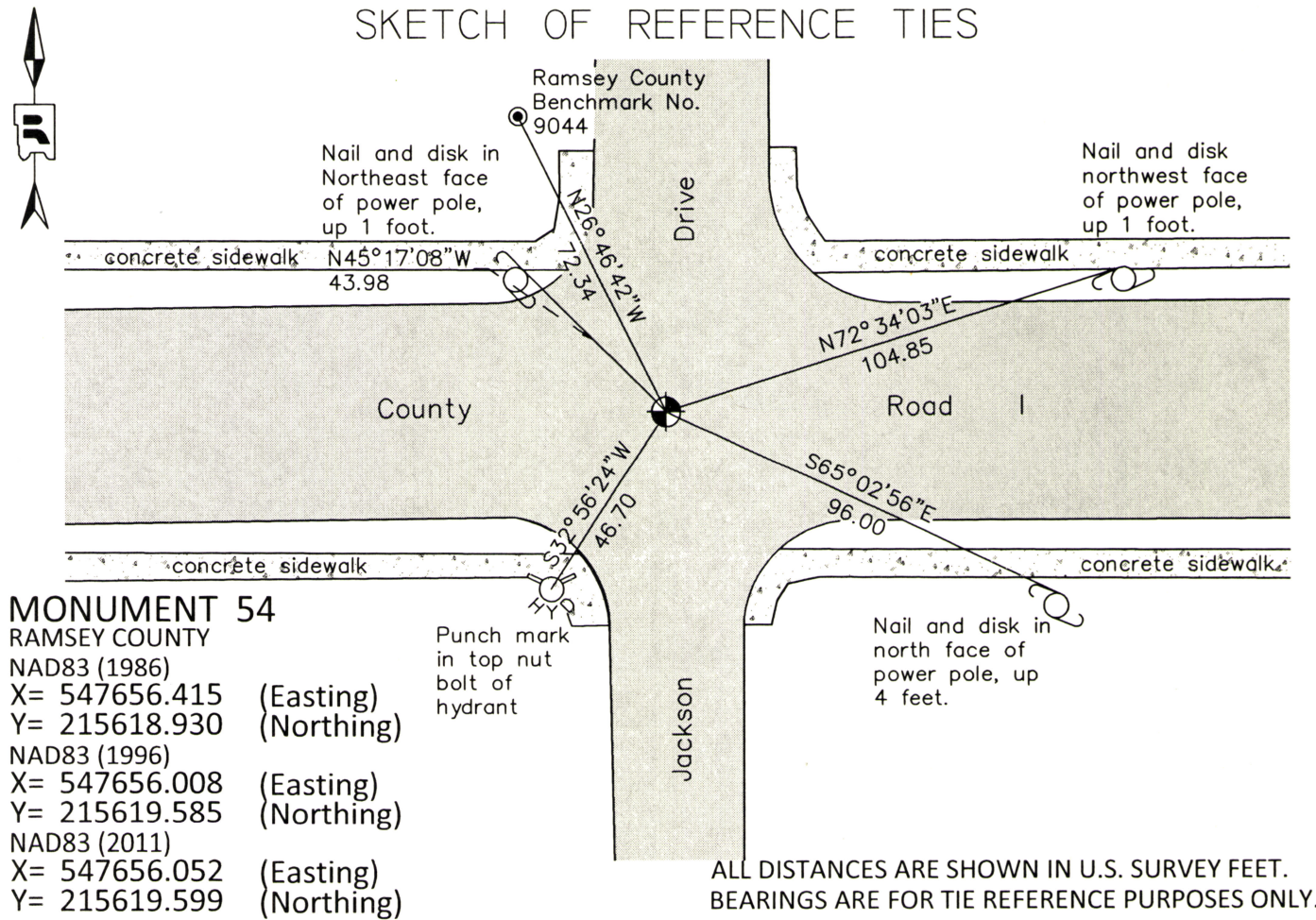
At the corner location shown on the sketch

On June 25, 2014 found a cast iron monument, flush.

left monument as found raised/lowered monument removed monument (explain)

On _____ placed a _____

SKETCH OF REFERENCE TIES



MONUMENT 54
 RAMSEY COUNTY
 NAD83 (1986)
 X= 547656.415 (Easting)
 Y= 215618.930 (Northing)
 NAD83 (1996)
 X= 547656.008 (Easting)
 Y= 215619.585 (Northing)
 NAD83 (2011)
 X= 547656.052 (Easting)
 Y= 215619.599 (Northing)

ALL DISTANCES ARE SHOWN IN U.S. SURVEY FEET.
 BEARINGS ARE FOR TIE REFERENCE PURPOSES ONLY.

Statements of evidence relative to this corner are on the following page.

I hereby certify that this survey, plan, or report was prepared by me or under my direct supervision, that I am a duly Licensed Land Surveyor under the laws of the state of Minnesota, and that this certificate is correct and complete to the best of my knowledge and belief.

Daniel D. Baar 7-17-17
 Daniel D. Baar Date
 Deputy County Surveyor
 Minnesota License No. 45816

OFFICE OF COUNTY SURVEYOR
 County of Ramsey

I hereby certify that this document was filed in the County Surveyor's office this 17th day of July, 20 17.

Craig W. Hinzman
 Craig W. Hinzman, L.S.
 Ramsey County Surveyor

MONUMENT 54

North Quarter Corner of Section 8, Township 30 North, Range 23 West

December 16, 1847	Set 1/4 Section post (Bur Oak 12 N77E 2.11) Isaac Higbee, Deputy Surveyor
January 6, 1903	In Establishing the 1/4 Corner between Sections 5 and 8, found one Government tree and an old stake at 1/4 Corner. Set monument. Ramsey County Resurvey
November, 1943	Checked monument. Ramsey County Engineer's Office
March, 1952	Checked monument. Ramsey County Engineer's Office
February, 1954	Checked monument. Ramsey County Engineer's Office
August 8, 1974	Found cast iron monument, down 0.13 ft. and retied. Ramsey County Surveyor's Office
June 7, 1988	Monument destroyed by construction; replaced with a 20 in. cast iron monument and cemented into place. Ramsey County Surveyor's Office
May 17, 1990	Retied monument. Ramsey County Surveyor's Office
February 22, 1999	Retied monument. Ramsey County Surveyor's Office
December 29, 2004	Retied monument. Ramsey County Surveyor's Office
October 19, 2009	Retied monument. Ramsey County Surveyor's Office
June 25, 2014	Checked monument and tie condidtions. Established NAD83 (1996 Adjusted) coordinates on the cast iron monument. Work was performed as part of County Surveyor's Office survey project in Sections 9 and 16 in support of the redevelopment of former TCAAP property. Coordinates established utilizing historic traverse data, complimenting current traverse data and GPS measurements, all analyzed and adjusted by least squares. Ramsey County Surveyor's Office
June 11, 2015	Performed a 50 minute static GPS observation and post-processed data using OPUS to establish NAD83 (2011 Adjusted) coordinates on monument. Ramsey County Surveyor's Office