

MONUMENT 264

CERTIFICATE OF LOCATION OF GOVERNMENT CORNER

North Quarter Corner and Meander Corner No. 27 of Section 31, Township 30 North,
Range 22 West, County of Ramsey, State of Minnesota.

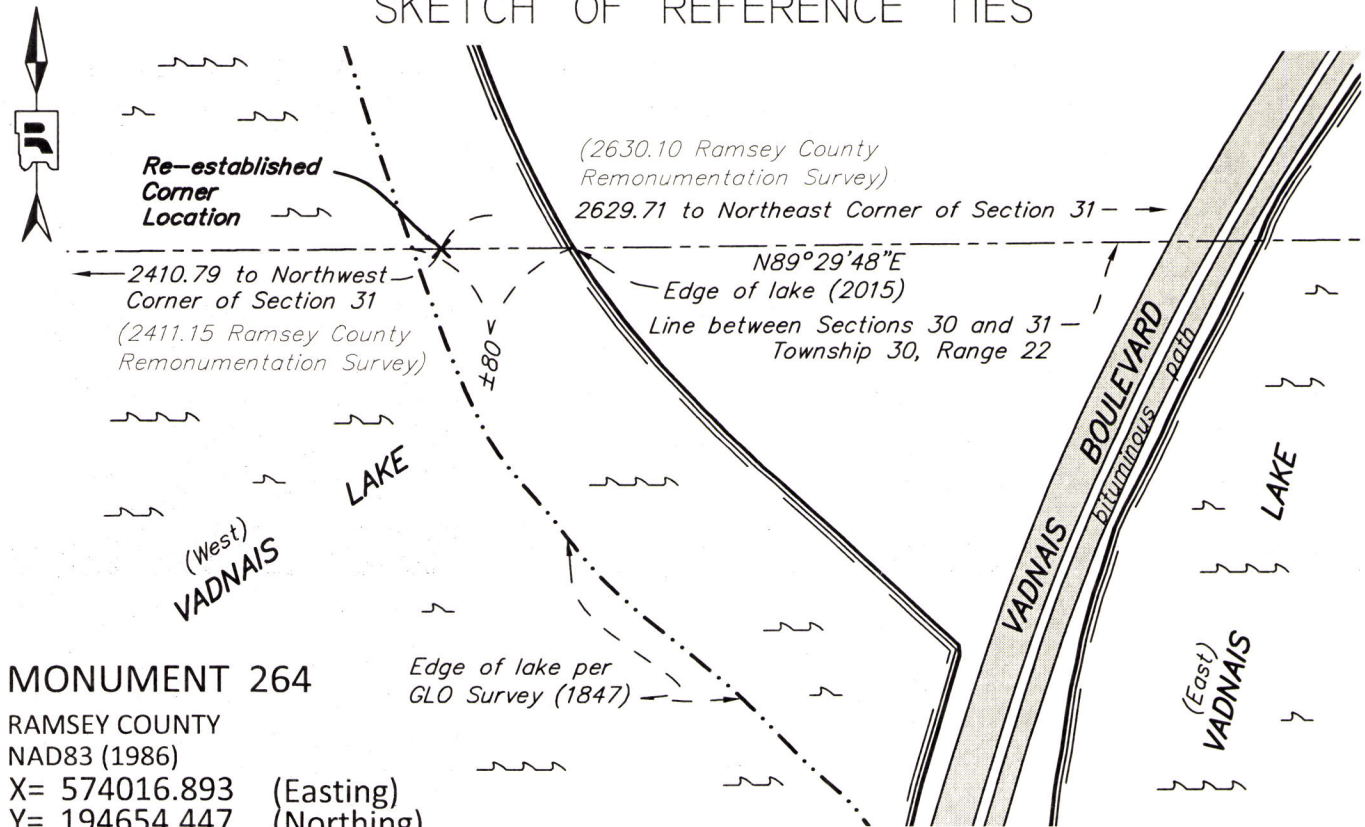
At the corner location shown on the sketch

On July 14, 2016 searched for granite monument in Vadnais Lake, found nothing.

left monument as found raised/lowered monument removed monument (explain)

On _____ placed a _____

SKETCH OF REFERENCE TIES



MONUMENT 264

RAMSEY COUNTY
NAD83 (1986)

X= 574016.893 (Easting)
Y= 194654.447 (Northing)

NAD83 (2011)

X= 574016.420 (Easting)
Y= 194655.031 (Northing)

ALL DISTANCES ARE SHOWN IN U.S. SURVEY FEET.
BEARINGS ARE FOR TIE REFERENCE PURPOSES ONLY.

Statements of evidence relative to this corner are on the following page.

I hereby certify that this survey, plan, or report was prepared by me or under my direct supervision, that I am a duly Licensed Land Surveyor under the laws of the state of Minnesota, and that this certificate is correct and complete to the best of my knowledge and belief.

Daniel D. Baar 4-25-17
Daniel D. Baar Date
Deputy County Surveyor
Minnesota License No. 45816

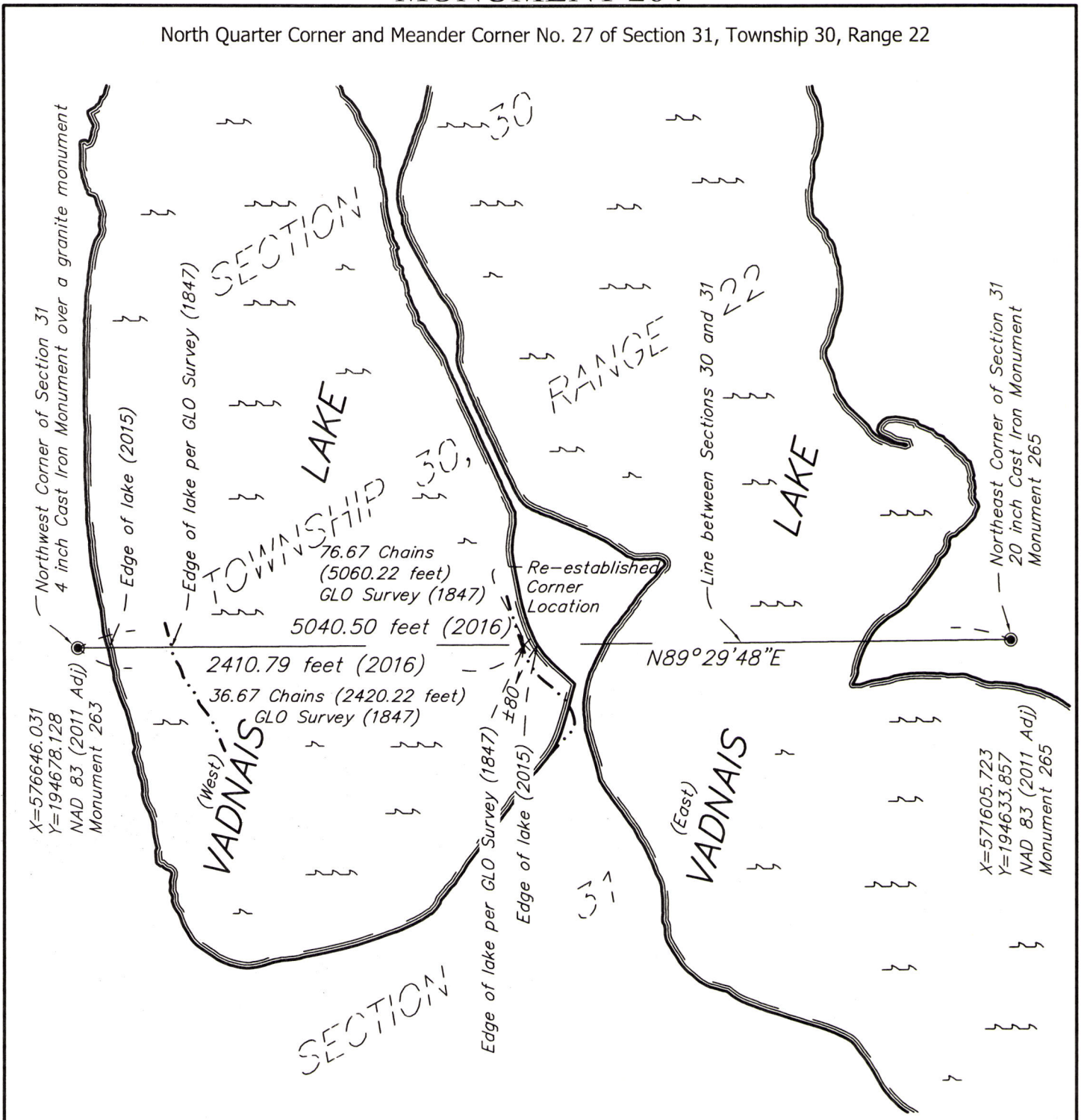
OFFICE OF COUNTY SURVEYOR
County of Ramsey

I hereby certify that this document was filed in the County Surveyor's office this 25th day of April, 20 17.

Craig W. Hinzman
Craig W. Hinzman, L.S.
Ramsey County Surveyor

MONUMENT 264

North Quarter Corner and Meander Corner No. 27 of Section 31, Township 30, Range 22



The position of the North Quarter Corner and Meander Corner No. 27 of Section 31, Township 30, Range 22 was established by single line proration between the Northeast and Northwest Corner for said Section using GLO distances and modern measurements taken between the same two corners.

The Northwest Corner of Section 31 was re-established in August of 1896. Notes indicated that no government tie trees remained at the time, so the position was established by running a straight line North and South, and proring on line. A map indicates this position was monumented with a granite monument. County Surveyor's Office notes indicate a granite monument exists under a 4 inch cast iron monument as of the date of this certification.

The Northeast Corner of Section 31 was monumented with a granite monument in August of 1895. The granite monument was set in place of a iron stake that was found at the time. All government witness trees were gone. County Surveyor's Office notes indicate the granite monument was replaced in 1990 with a 20 inch cast iron monument which remains in place at the time of this certification.

MONUMENT 264

North Quarter Corner and Meander Corner No. 27 of Section 31, Township 30, Range 22

- December, 1847 Ran West Random, intersected west boundary at 76.67 chains. Ran East corrected between Sections 30 and 31 from the Northwest Corner of Section 31, 36.67 chains, set Quarter Section Post and tied, B. Oak 16 76 1/2°E 1.26, B. Oak 17 N52°E 1.08, Isaac Higbee, Deputy Surveyor
- March 15, 1848 GLO plat showing Quarter Corner as Meander Corner 27 is approved.
- December, 1899 In establishing the Quarter Corner between Sections 30 and 31, same as Meander Corner No. 27, Ran straight line East and West, prorated and Fixed Quarter Corner. No Government trees. Ramsey County Resurvey.
- April, 1900 Set Monument, Ramsey County Resurvey.
- +/-1882-1924 Note: St Paul Board of Water Commissioners acquired properties surrounding Lake Vadnais for the purposes of building a water supply system. This project also caused the grading of the peninsula and creation of a dike separating the two sides of the lake. The water level of Lake Vadnais seems to have risen significantly as a result of this project.
- +/-1990 Checked location and found it to land in Vadnais Lake, Ramsey County Surveyor's Office.
- Note: The Ramsey County Surveyor's office published coordinates for this position around this time period. No evidence remains as to how the computed position was established.
- July 14, 2016 Computed search position using published coordinate values on the Northwest and Northeast Corners of Section 31, prorating against the 1900 resurvey measurements. The solution was found to be very close to the coordinate position that was published in 1991. The search position was determined in the field using VRS GPS aboard a Jon Boat. The position landed +/-50 feet southwesterly of shore in +/-5 feet of water. A search area within a +/-5 foot radius of the computed position was probed to a depth of 1.5 feet below the lake bottom. The search was for a granite monument, from the Ramsey County Resurvey, that may have remained as the lake level rose. The bottom of the lake was all sand and probing revealed no solid objects of significance to an obtainable depth, Ramsey County Surveyor's Office.
- July 21, 2016 Computed a prorated distance (measured 5040.50 feet in 2017) from the Northwest Corner of Section 31, on a line to the Northeast Corner of Section 31, using GLO distance (36.67 chains); also prorated 1900 resurvey distance (2411.15 feet). Both yielded the same result (2410.79 feet from the Northwest Corner to the North Quarter Corner position). Published new coordinates based on this distance and on a line from the Northeast and Northwest Corners. Ramsey County Surveyor's Office.