

MONUMENT 157

CERTIFICATE OF LOCATION OF GOVERNMENT CORNER

Northeast Corner of Section 21, Township 30 North, Range 23 West, County of Ramsey, State of Minnesota.

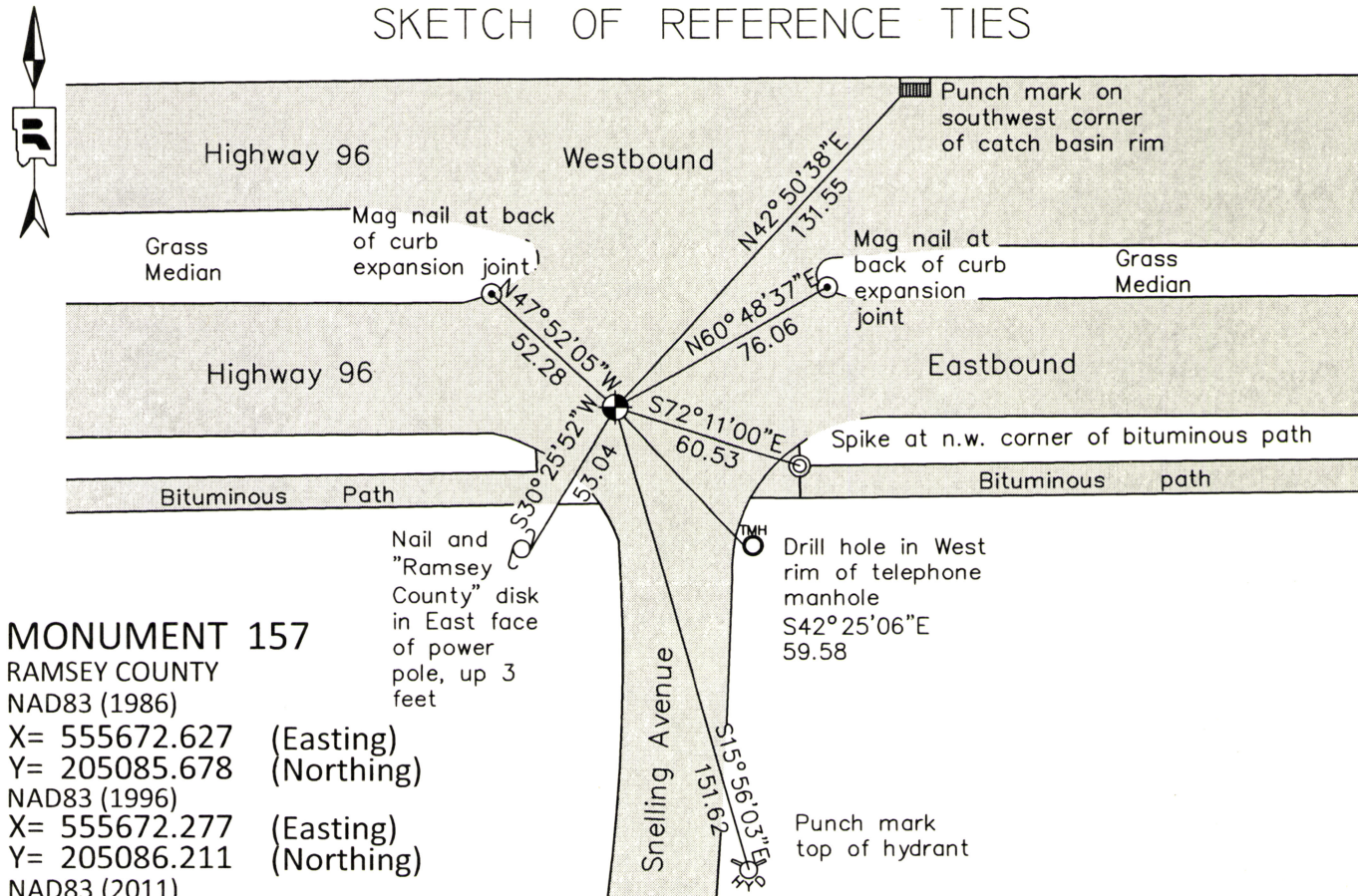
At the corner location shown on the sketch

On June 17, 2014 found a cast iron monument, within a cast iron manhole assembly.

left monument as found raised/lowered monument removed monument (explain)

On _____ placed a _____

SKETCH OF REFERENCE TIES



MONUMENT 157
 RAMSEY COUNTY
 NAD83 (1986)
 X= 555672.627 (Easting)
 Y= 205085.678 (Northing)
 NAD83 (1996)
 X= 555672.277 (Easting)
 Y= 205086.211 (Northing)
 NAD83 (2011)
 X= 555672.321 (Easting)
 Y= 205086.216 (Northing)

ALL DISTANCES ARE SHOWN IN U.S. SURVEY FEET.
 BEARINGS ARE FOR TIE REFERENCE PURPOSES ONLY.

Statements of evidence relative to this corner are on the following page.

I hereby certify that this survey, plan, or report was prepared by me or under my direct supervision, that I am a duly Licensed Land Surveyor under the laws of the state of Minnesota, and that this certificate is correct and complete to the best of my knowledge and belief.

Daniel D. Baar 7-18-17
 Daniel D. Baar Date
 Deputy County Surveyor
 Minnesota License No. 45816

OFFICE OF COUNTY SURVEYOR
 County of Ramsey

I hereby certify that this document was filed in the County Surveyor's office this 18th day of July, 20 17.

Craig W. Hinzman
 Craig W. Hinzman, L.S.
 Ramsey County Surveyor

MONUMENT 157

Northeast Corner of Section 21, Township 30, Range 23

December 16, 1847	Set post Corner to Sections 13, 16, 21, and 22. (Bur Oak 8 N66E 27; Bur Oak 11 N57W 9) Isaac Higbee, Deputy Surveyor
Unknown Date, 1889	The Northeast Corner of Section 21 was fixed by Gates A. Johnson. (Did not find any detailed notes in his field book on file at the Minnesota History Center).
September 30, 1895	Set monument and tied monument. Ramsey County Remonumentation survey
November, 1943	Checked monument. Ramsey County Engineer's Office
January, 1946	Checked monument. Ramsey County Engineer's Office
May 31, 1974	Found a lag bolt on surface; granite monument down 0.35 ft.; placed P.K. nails 2 ft. away in each quadrant, Ramsey County Surveyor's Office.
June 13, 1974	Placed a cast iron cap and bolt monument over granite monument, Ramsey County Surveyor's Office.
June 20, 1974	Tied monument, Ramsey County Surveyor's Office.
November 5, 1986	Monument had been disturbed. Dug down to granite, appeared to be leaning, Ramsey County Surveyor's Office.
June 9, 1988	Placed a short cast iron monument (4 in. long Harrison) in relocated position and cemented in place, Ramsey County Surveyor's Office.
January 14, 1992	Tied monument, Ramsey County Surveyor's Office.
Unknown Date	Monument removed for construction, Ramsey County Surveyor's Office.
October 3, 2003	Set a 20 in. cast iron monument down 18 in. from finished grade; 12 in. cast iron manhole assembly set by contractor, Ramsey County Surveyor's Office.
February 15, 2005	Tied monument, Ramsey County Surveyor's Office.
July 29, 2010	Retied monument, Ramsey County Surveyor's Office.

MONUMENT 157

Northeast Corner of Section 21, Township 30, Range 23

June 17, 2014

Checked monument and tie conditions. Performed a 50 minute static GPS observation and post-processed data using OPUS to establish NAD83 (2011 Adjusted) coordinates on monument. Also, established NAD83 (1996 Adjusted) coordinates on the monument as part of County Surveyor's Office survey project in Sections 9 and 16 in support of the redevelopment of former TCAAP property. Coordinates established utilizing historic traverse data, complimenting current traverse data and GPS measurements, all analyzed and adjusted by least squares.
Ramsey County Surveyor's Office