

# MONUMENT 155

## CERTIFICATE OF LOCATION OF GOVERNMENT CORNER

Northeast corner of Section 20, Township 30 North, Range 23 West, County of Ramsey, State of Minnesota.

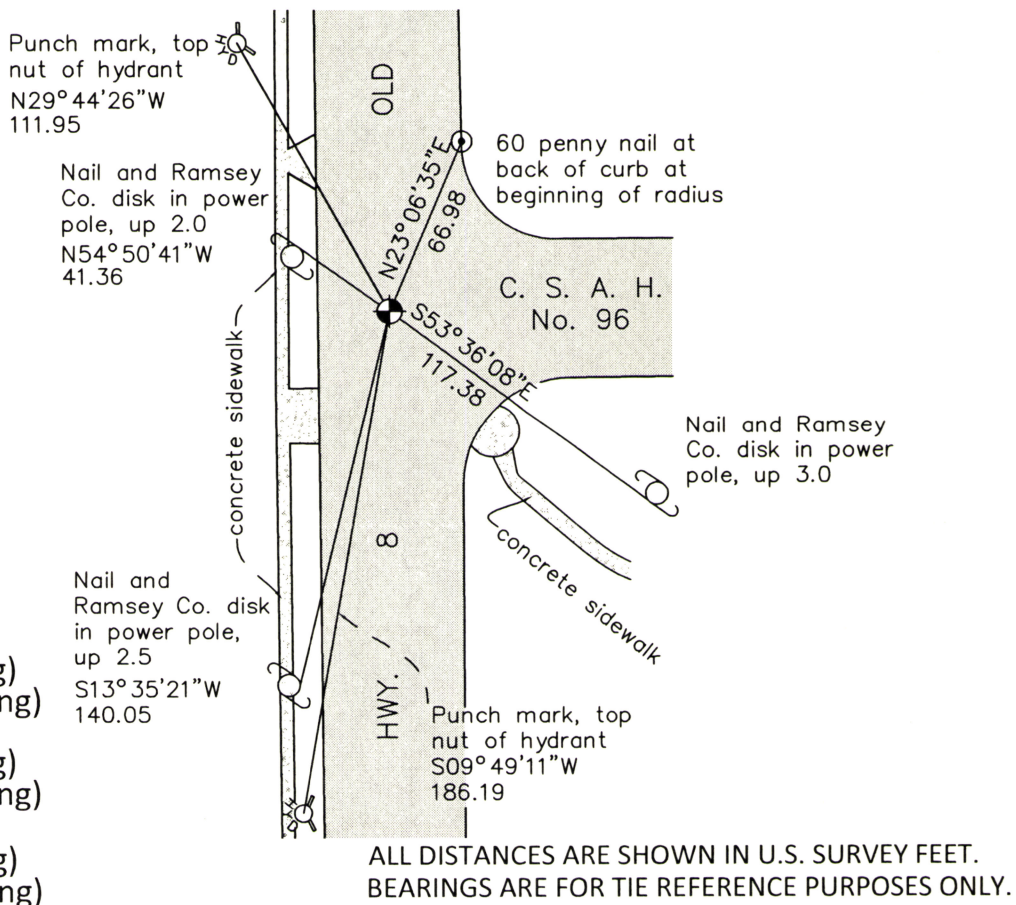
At the corner location shown on the sketch

On June 17, 2014 found a cast iron monument, within a cast iron manhole assembly.

left monument as found       raised/lowered monument       removed monument (explain)

On \_\_\_\_\_ placed a \_\_\_\_\_

### SKETCH OF REFERENCE TIES



**MONUMENT 155**  
 RAMSEY COUNTY  
 NAD83 (1986)  
 X= 550405.736 (Easting)  
 Y= 205052.135 (Northing)  
 NAD83 (1996)  
 X= 550405.285 (Easting)  
 Y= 205052.675 (Northing)  
 NAD83 (2011)  
 X= 550405.349 (Easting)  
 Y= 205052.653 (Northing)

ALL DISTANCES ARE SHOWN IN U.S. SURVEY FEET.  
 BEARINGS ARE FOR TIE REFERENCE PURPOSES ONLY.

Statements of evidence relative to this corner are on the following page.

I hereby certify that this survey, plan, or report was prepared by me or under my direct supervision, that I am a duly Licensed Land Surveyor under the laws of the state of Minnesota, and that this certificate is correct and complete to the best of my knowledge and belief.

Daniel D. Baar      7-18-17  
 Daniel D. Baar      Date  
 Deputy County Surveyor  
 Minnesota License No. 45816

OFFICE OF COUNTY SURVEYOR  
 County of Ramsey

I hereby certify that this document was filed in the County Surveyor's office this 18<sup>th</sup> day of July, 20 17.

Craig W. Hinzman  
 Craig W. Hinzman, L.S.  
 Ramsey County Surveyor

# MONUMENT 155

Northeast Corner of Section 20, Township 30 North, Range 23 West

December 16, 1847	Set post Corner to Sections 16, 17, 20, and 21. (Bur Oak 12 N83W 61; Bur Oak 14 S5E 90). Isaac Higbee, Deputy Surveyor
April 20, 1901	In Establishing the N.E. Corner of Section 20, found old Gov. witness tree stump hole. Fixed Corner and tied it. Ramsey County Re-monumentation Survey
May 25, 1901	Set monument. Ramsey County Re-monumentation Survey
November, 1943	Checked monument. Ramsey County Engineer's Office
March, 1968	Checked monument. Ramsey County Engineer's Office
August 21, 1974	Found granite monument down, 0.16 feet. Ramsey County Surveyor's Office
May 17, 1976	Set cast iron cap monument. Ramsey County Surveyor's Office
Unknown Date	20 inch cast iron monument set after reconstruction of road by County Highway Department. Ramsey County Surveyor's Office
June 13, 1990	Tied monument. Ramsey County Surveyor's Office
July 13, 1998	Retied monument; top missing. Ramsey County Surveyor's Office
July 21, 1998	Removed cast iron monument; set 20 inch cast iron monument within a cast iron manhole assembly. Ramsey County Surveyor's Office
February 15, 2005	Retied monument. Ramsey County Surveyor's Office
July 19, 2010	Retied monument. Ramsey County Surveyor's Office
October 23, 2012	Performed a 50 minute static GPS observation and post-processed data using OPUS to establish NAD83 (2011 Adjusted) coordinates on monument. Ramsey County Surveyor's Office
June 17, 2014	Checked monument and tie conditions. Established NAD83 (1996 Adjusted) coordinates on the cast iron monument. Work was performed as part of County Surveyor's Office survey project in support of the redevelopment of the former TCAAP property. Coordinates established utilizing historic traverse data, complimenting current traverse data and GPS measurements, all analyzed and adjusted by least squares. Ramsey County Surveyor's Office