

# MONUMENT 8

## CERTIFICATE OF LOCATION OF FOUND MONUMENT

Closing Corners for the North Quarter Corner of Section 3, Township 30 North,  
Range 23 West, County of Ramsey, State of Minnesota.

At the corner location shown on the sketch

On June 2, 2016 found a cast iron monument, marked "RAMSEY COUNTY", flush.

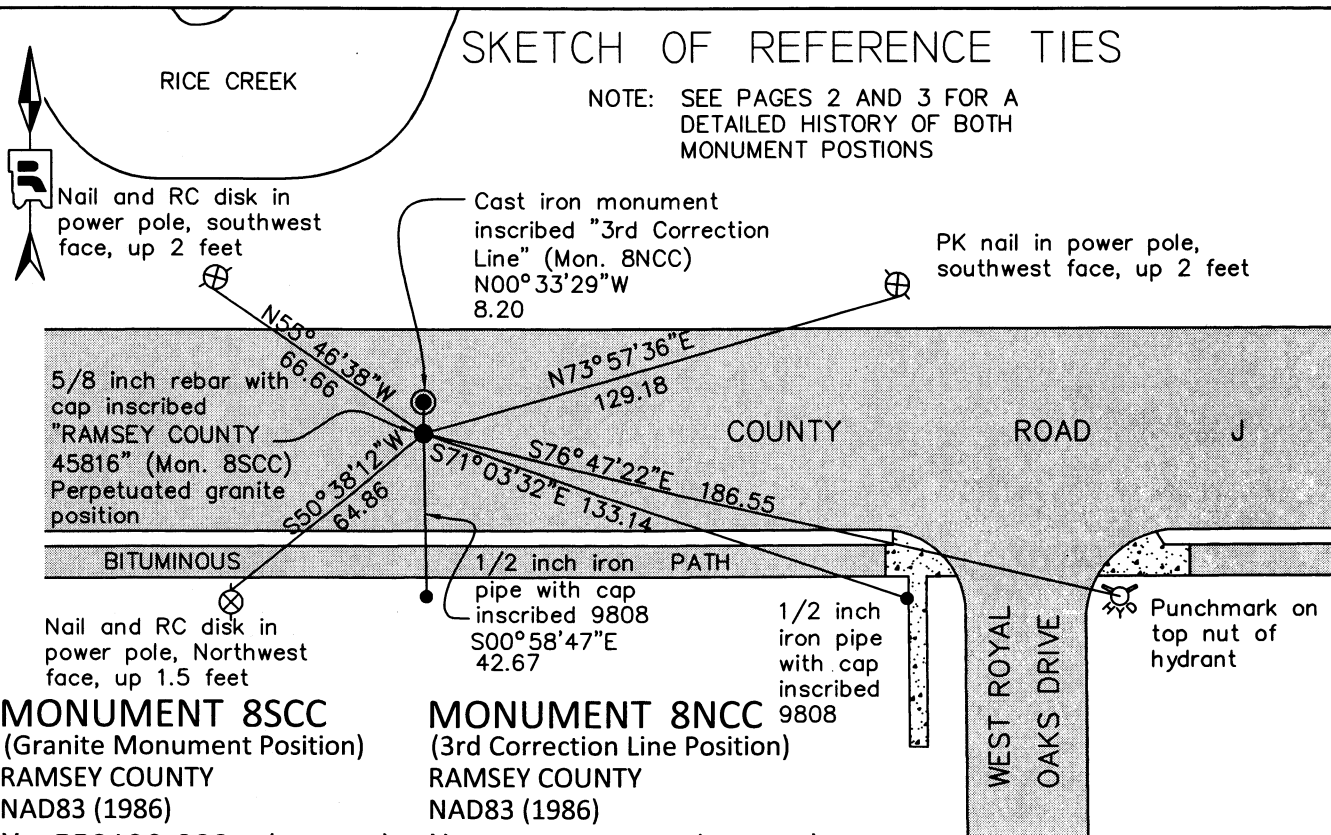
Tied out monument for removal during road reconstruction.

left monument as found       raised/lowered monument       removed monument (explain)

On June 17, 2016 placed a 5/8 inch by 14 inch rebar with cap inscribed "Ramsey County 45816".

### SKETCH OF REFERENCE TIES

NOTE: SEE PAGES 2 AND 3 FOR A  
DETAILED HISTORY OF BOTH  
MONUMENT POSITIONS



**MONUMENT 8SCC**  
(Granite Monument Position)  
RAMSEY COUNTY  
NAD83 (1986)

X= 558130.666 (Easting)  
Y= 221538.240 (Northing)  
NAD83 (2011)  
X= 558130.210 (Easting)  
Y= 221539.090 (Northing)

**MONUMENT 8NCC**  
(3rd Correction Line Position)  
RAMSEY COUNTY  
NAD83 (1986)

X= 558130.567 (Easting)  
Y= 221546.493 (Northing)  
NAD83 (2011)  
X= 558130.130 (Easting)  
Y= 221547.285 (Northing)

ALL DISTANCES ARE SHOWN IN U.S. SURVEY FEET. BEARINGS ARE FOR TIE REFERENCE PURPOSES ONLY.

Statements of evidence relative to this corner are on the following page.

I hereby certify that this survey, plan, or report was prepared by me or under my direct supervision, that I am a duly Licensed Land Surveyor under the laws of the state of Minnesota, and that this certificate is correct and complete to the best of my knowledge and belief.

Daniel D. Baar      9-14-16  
Date  
Deputy County Surveyor  
Minnesota License No. 45816

OFFICE OF COUNTY SURVEYOR  
County of Ramsey

I hereby certify that this document was filed in the County Surveyor's office this 14th day of September, 2016.

Craig W. Hinzman  
Craig W. Hinzman, L.S.  
Ramsey County Surveyor

# MONUMENT 8SCC

Closing Corner for a North Quarter Corner of Section 3, Township 30, Range 23 West,  
as monumented by a granite monument in 1900

August, 1900	In Establishing the Quarter Corner on the North of Section 3, Prorated and fixed Quarter Corner, no government trees. Fixed Corner and set Monument. Ramsey County Resurvey
December, 1943	Monument Checked. Ramsey County Engineering Office
January, 1946	Monument Checked. Ramsey County Engineering Office
March, 1952	Monument Checked. Ramsey County Engineering Office
October, 1963	Monument Checked. Ramsey County Engineering Office
April 26, 1963	Found a granite monument. Anoka County Surveyor's Office
July 7, 1975	Found Iron in concrete; found a Granite Monument, down +/- 5 inches; placed a short, (4 3/8 inch) Cast Iron Monument. Ramsey County Surveyor's Office
December 9, 1975	Retied Monument. Ramsey County Surveyor's Office
November 22, 1991	Tied out Monument for road construction. Ramsey County Surveyor's Office
August 5, 1992	Removed short cast Iron Monument. Ramsey County Surveyor's Office
August 30, 1993	Relocated Monument position. Ramsey County Surveyor's Office
September 1, 1993	Retied Monument. Ramsey County Surveyor's Office
September 8, 1993	Set 20 in. Cast Iron Monument. Ramsey County Surveyor's Office
October 10, 1993	Placed "Set 45" concrete around monument. Ramsey County Surveyor's Office
June 2, 2016	Tied out North Quarter cast iron monument for removal during road reconstruction and performed 50 minute static observation. Ramsey County Surveyor's Office
June 17, 2016	Construction obliterated the cast iron monument at the perpetuated position of the August 1900 granite monument. Re-monumented position with a 5/8 inch by 14 inch rebar with cap inscribed "Ramsey County 45816". Set rebar using construction offsets and local ties. Tied out monument. Ramsey County Surveyor's Office

# MONUMENT 8NCC

Closing Corner for a North Quarter Corner of Section 3, Township 30, Range 23  
placed on the "3rd Correction Line" in 1995

October 21, 1995	Set a 20 in. Cast Iron Monument marked "3RD CORRECTION LINE", 8.25 ft. North of original Granite Monument location to a calculated position on the Third Correction Line. The Correction Line position was calculated by intersecting a line connecting the Southwest Corner of Section 36, Township 31, Range 23, and the South Quarter Corner of said Section 36 with a line from the Center of Section 3, Township 30, Range 23 and the existing monument (8SCC Granite Monument Location) marking the North Quarter Corner of said Section 3. Ramsey County Surveyor's Office
December 14, 1998	Tied Monument 8SC. Ramsey County Surveyor's Office
June, 2004	Retied Monument. Ramsey County Surveyor's Office
September 22, 2009	Retied Monument. Ramsey County Surveyor's Office
April 22, 2014	Found cast iron monument, flush with road. Checked ties using Certificate of location dated September 22, 2009. All ties present and in good condition. Ramsey County Surveyor's Office
July, 2014	Cast iron monument on 3RD Correction line found and ties updated. The RAMSEY COUNTY MONUMENT is on centerline, updated ties. Anoka County Surveyor's Office
October 19, 2015	Performed 50 minute static observation on found cast iron monument set in 1995 on 3RD correction Line. Ramsey County Surveyor's Office
June 2, 2016	Checked ties on found cast iron monument set as a closing corner on the 3rd correction line in 1995. Tied cast iron monument. Ramsey County Surveyor's Office