

MONUMENT 84

CERTIFICATE OF LOCATION OF GOVERNMENT CORNER

East Quarter Corner of Section 10, Township 30 North, Range 23 West, County of Ramsey, State of Minnesota.

At the corner location shown on the sketch

On August 23, 2015 found a "Ramsey County" cast iron monument, within a cast iron manhole assembly.

left monument as found raised/lowered monument removed monument (explain)

On August 25, 2015 placed a cast iron "Ramsey County" Witness Monument 60.00 feet westerly of corner on the section line due to heavy traffic conditions at corner location.

SKETCH OF REFERENCE TIES

MONUMENT 84

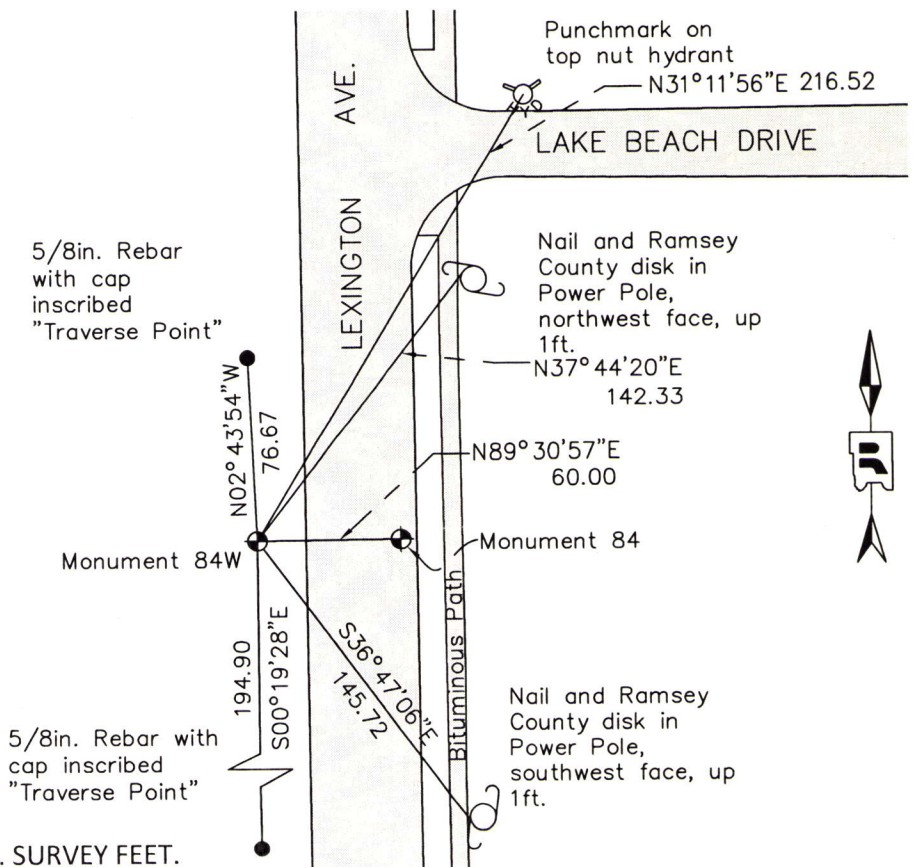
RAMSEY COUNTY
NAD83 (1986)
X= 560874.895 (Easting)
Y= 213022.904 (Northing)

RAMSEY COUNTY
NAD83 (2011)
X= 560874.545 (Easting)
Y= 213023.652 (Northing)

MONUMENT 84W

RAMSEY COUNTY
NAD83 (1986)
X= 560814.897 (Easting)
Y= 213022.398 (Northing)

RAMSEY COUNTY
NAD83 (2011)
X= 560814.547 (Easting)
Y= 213023.145 (Northing)



ALL DISTANCES ARE SHOWN IN U.S. SURVEY FEET.
BEARINGS ARE FOR TIE REFERENCE PURPOSES ONLY.

Statements of evidence relative to this corner are on the following page.

I hereby certify that this survey, plan, or report was prepared by me or under my direct supervision, that I am a duly Licensed Land Surveyor under the laws of the state of Minnesota, and that this certificate is correct and complete to the best of my knowledge and belief.

Daniel D. Baar 3-17-16
Date
Daniel D. Baar
Deputy County Surveyor
Minnesota License No. 45816

OFFICE OF COUNTY SURVEYOR
County of Ramsey

I hereby certify that this document was filed in the County Surveyor's office this 17th day of March, 20 16.

Craig W. Hinzman
Craig W. Hinzman, L.S.
Ramsey County Surveyor

MONUMENT 84

East Quarter Corner of Section 10, Township 30 North, Range 23 West

December 16, 1847	Set Quarter Post; Tamarack 12 N68E 1.95. Isaac Higbee, Deputy Surveyor
March 14, 1898	In establishing the Quarter Corner between Sections 10 and 11, ran straight line from Corner to Corner and fixed Quarter Corner half way. Government witness tree gone. Ramsey County Resurvey
August, 1900	Set monument. Ramsey County Resurvey
November, 1943	Checked monument. Ramsey County Engineering Office
February, 1954	Checked monument. Ramsey County Engineering Office
October, 1964	Checked monument. Ramsey County Engineering Office
July 16, 1975	Found a granite monument down 0.43 ft.; set short (4 3/8 in.) cast iron. Ramsey County Surveyor's Office
July 28, 1975	Retied monument. Ramsey County Surveyor's Office
April 30, 1990	Removed short cast iron monument for construction department; granite monument destroyed. Ramsey County Surveyor's Office
August 21, 1991	Set a 20 in. cast iron monument. Ramsey County Surveyor's Office
August 29, 1991	Tied monument and cemented top. Ramsey County Surveyor's Office
April 30, 2002	Removed and lowered cast iron monument; set 12 in. tube around monument. Ramsey County Surveyor's Office
May 14, 2002	Set a cast iron manhole assembly over monument. Ramsey County Surveyor's Office
November 22, 2002	Retied monument. Ramsey County Surveyor's Office
June 28, 2007	Retied monument. Ramsey County Surveyor's Office
July 22, 2015	Checked ties. Did not open manhole due to monument being in high traffic. Observed the manhole lid; looked to be in good condition. Ramsey County Surveyor's Office
August 23, 2015	Checked monument; monument in good condition. Performed a 50 minute static GPS observation. Ramsey County Surveyor's Office
August 25, 2015	Set a cast iron Witness Monument (Monument 84W) 60.00 feet west of the East Quarter Corner (Monument 84) on the Quarter Section line. The Witness Monument was set using static GPS observations measured on the Center of Section 15 (Monument 83), the East Quarter Corner (Monument 84), a control point to the north and a control point to the south. Angles and distances were measured with a total station to tie the static GPS observations on the control points and the East Quarter Corner (Monument 84) together. A least squares adjustment software program was used to derive coordinate positions for the control points and the witness corner location. The Witness Monument was set because the East Quarter Corner (Monument 84) is impractical to observe because it is in the center of a high traffic driving lane. Due to its impractical location, this monument will no longer be maintained. Tied the new Witness Monument and placed sign and post 1 ft. west. Ramsey County Surveyor's Office