

MONUMENT 79

CERTIFICATE OF LOCATION OF FOUND MONUMENT

Center of Section 8, Township 30 North, Range 23 West, County of Ramsey, State of Minnesota.

At the corner location shown on the sketch

On June 24, 2014 found a "Ramsey County" cast iron monument flush in bituminous road.

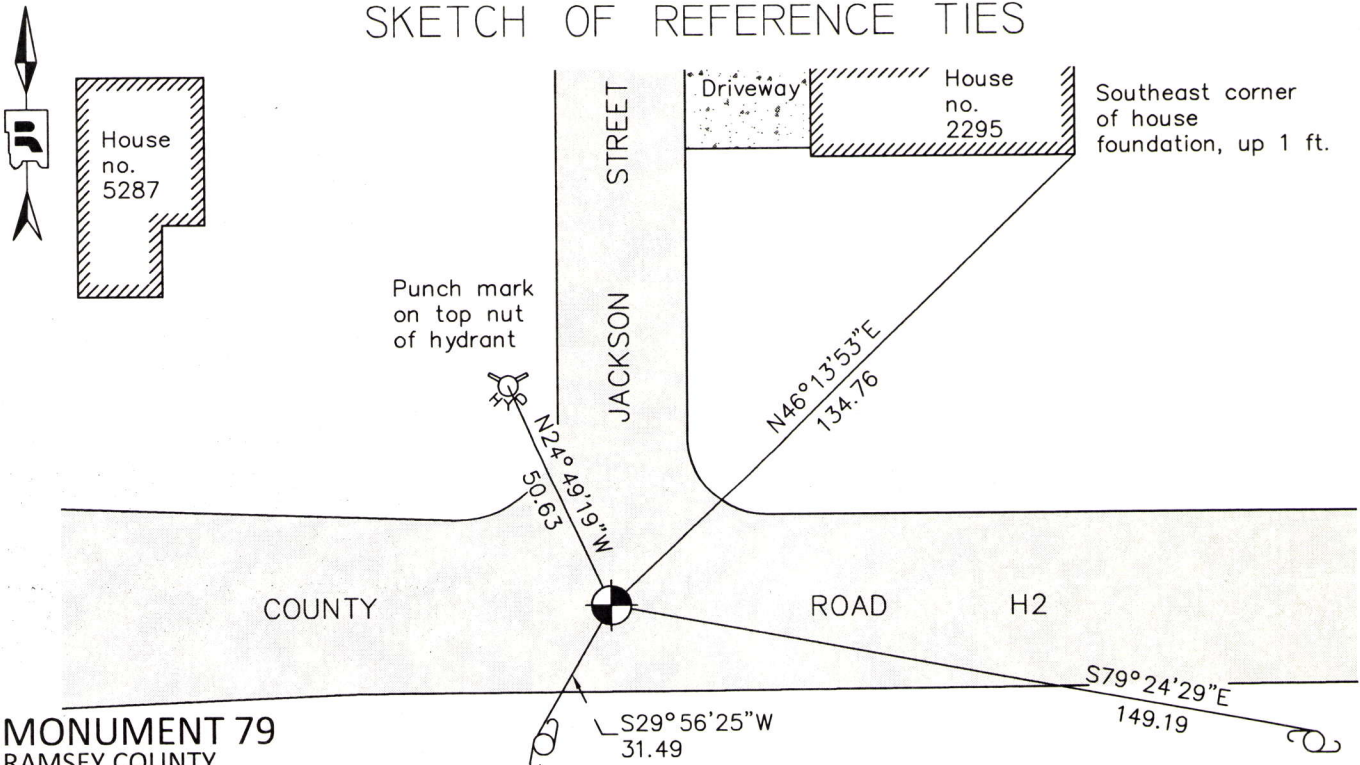
left monument as found

raised/lowered monument

removed monument (explain)

On _____ placed a _____

SKETCH OF REFERENCE TIES



**MONUMENT 79
RAMSEY COUNTY**

NAD83 (1986)

X= 547691.844 (Easting)
Y= 212972.891 (Northing)

NAD83 (1996)

X= 547691.330 (Easting)
Y= 212972.521 (Northing)

Nail and R.L.S. 9051 disk in west face of power/light pole, up 2 ft.

Nail and R.L.S. 9051 disk in north face of power pole, up 2.5 ft.

ALL DISTANCES ARE SHOWN IN U.S. SURVEY FEET.
BEARINGS ARE FOR TIE REFERENCE PURPOSES ONLY.

Statements of evidence relative to this corner are on the following page.

I hereby certify that this survey, plan, or report was prepared by me or under my direct supervision, that I am a duly Licensed Land Surveyor under the laws of the state of Minnesota, and that this certificate is correct and complete to the best of my knowledge and belief.

Daniel D. Baar 6-10-15
Daniel D. Baar Date
Deputy County Surveyor
Minnesota License No. 45816

OFFICE OF COUNTY SURVEYOR
County of Ramsey

I hereby certify that this document was filed in the County Surveyor's office this 10th day of June, 20 15.

Craig W. Hinzman
Craig W. Hinzman, L.S.
Ramsey County Surveyor

MONUMENT 79

Center of Section 8, Township 30 North, Range 23 West

| | |
|--------------------|---|
| July 8, 1903 | Fixed the Center of Section 8 by intersection, and set monument, Ramsey County Surveyor's Office. |
| November, 1943 | Checked monument, Ramsey County Surveyor's Office. |
| January, 1946 | Checked monument, Ramsey County Surveyor's Office. |
| March, 1952 | Checked monument, Ramsey County Surveyor's Office. |
| April 6, 1965 | Tied monument, Ramsey County Surveyor's Office. |
| January, 1974 | Checked monument, Ramsey County Surveyor's Office. |
| August 19, 1974 | Found a cast iron monument flush and tied, Ramsey County Surveyor's Office. |
| 1986 | City of Mounds View street construction destroyed monument, Ramsey County Surveyor's Office. |
| February 22, 1999 | Found P.K. nail and ribbon; traversed the North 1/2 of Section 8 and Southeast of section. Set P.K. nail at record coordinates (West-Southwest 0.23 ft. from existing P.K.); checked old ties and set four P.K. nails for digging, Ramsey County Surveyor's Office. |
| June 28, 1999 | Set a 20 in. cast iron monument flush, Ramsey County Surveyor's Office. |
| September 5, 2003 | Tied monument, Ramsey County Surveyor's Office. |
| July 12, 2007 | Retied monument, Ramsey County Surveyor's Office. |
| September 17, 2012 | Found a "Ramsey County" cast iron monument flush in bituminous road, checked tie conditions; performed a static GPS observation, Ramsey County Surveyor's Office. |
| June 24, 2014 | Found a "Ramsey County" cast iron monument flush in bituminous road, checked tie conditions; performed a RTK GPS observations, Ramsey County Surveyor's Office. |