

CERTIFICATE OF LOCATION OF PERPETUATED MONUMENT

East Quarter Corner of Section 10, Township 28 North, Range 23 West, County of Ramsey, State of Minnesota.

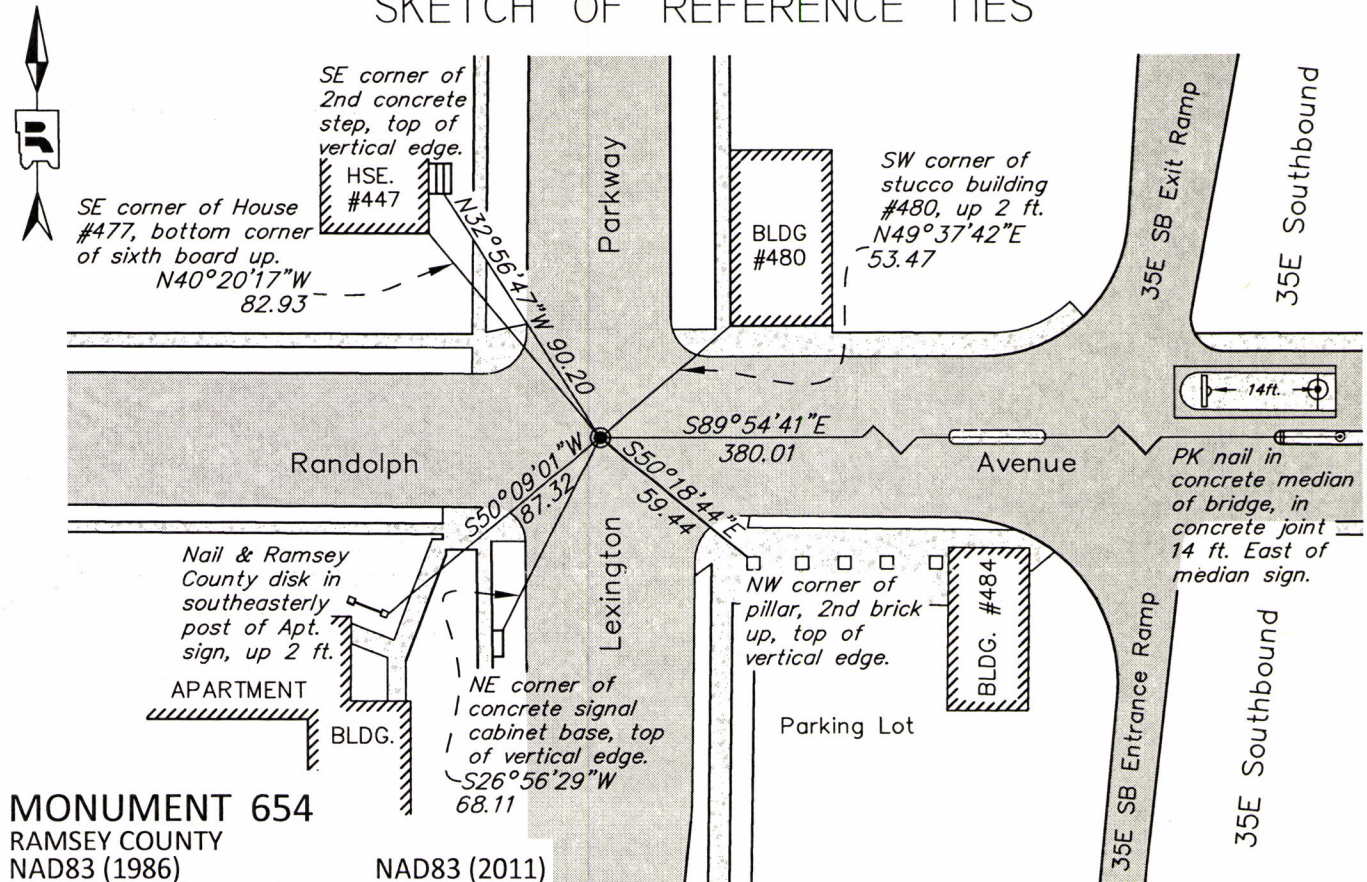
At the corner location shown on the sketch

On June 13, 2016 found a cast iron monument, down 0.1 feet. Tied monument for removal during road reconstruction.

left monument as found raised/lowered monument removed monument (explain)

On September 29, 2016 placed a 20 inch "Ramsey County" cast iron monument. Cast iron manhole assembly to be set by others during road reconstruction.

SKETCH OF REFERENCE TIES



MONUMENT 654

RAMSEY COUNTY
NAD83 (1986)

Northing = 149613.391
Easting = 561318.649

NAD83 (2011)

Northing = 149614.027
Easting = 561318.203

ALL DISTANCES ARE SHOWN IN U.S. SURVEY FEET.
BEARINGS ARE FOR TIE REFERENCE PURPOSES ONLY.

Statements of evidence relative to this corner are on the following page.

I hereby certify that this survey, plan, or report was prepared by me or under my direct supervision, that I am a duly Licensed Land Surveyor under the laws of the state of Minnesota, and that this certificate is correct and complete to the best of my knowledge and belief.

Daniel D. Baar 1-4-17
Daniel D. Baar Date
Deputy County Surveyor
Minnesota License No. 45816

OFFICE OF COUNTY SURVEYOR
County of Ramsey

I hereby certify that this document was filed in the County Surveyor's office this 4th day of January, 20 17.

Craig W. Hinzman
Craig W. Hinzman, L.S.
Ramsey County Surveyor

MONUMENT 654

City Index No. 196

East Quarter Corner of Section 10, Township 28N, Range 23W

October 30, 1847	Set Quarter Section Post, Bur Oak 16 N 15° E 29, Do 18 S 61° W 77. Isaac Higbee, Deputy Surveyor
January, 1887	Monument at Quarter Corner; Ties from Elmer & Morrison set January 1887. City of St. Paul Surveyor's Office
December, 1891	Monument lowered by J.B. Irvine. City of St. Paul Surveyor's Office
Unknown date	Found Cast Iron Monument set to grade in asphalt surface. Yellow Tie Book (ST 157-234 p.196) City of St. Paul Surveyor's Office
Unknown date, 1985	Found PK nail and checked ties. Yellow Tie Book (ST 157-234 p.196) City St. Paul Surveyor's Office
March, 1987	Found PK nail and checked ties. Yellow Tie Book (ST 157-234 p.196) City St. Paul Surveyor's Office
March 22, 1996	Found and painted P.K. nail. Yellow Tie Book (ST 157-234 p.196) City of St. Paul Surveyor's Office
February 27, 2008	Found a Cast Iron Monument 0.10 feet below grade. City of St. Paul Surveyor's Office
June 13, 2016	Found a Cast Iron Monument, down 0.10 feet. Set construction offsets and tied out monument in preparation for road reconstruction. Performed a 50-minute Static Observation on monument. Ramsey County Surveyor's Office
September 29, 2016	Monument removed during road construction. Set a 20 inch "Ramsey County" cast iron monument using construction offsets and local ties. Tied out monument. Cast iron manhole assembly to be set by others. Ramsey County Surveyor's Office