

MONUMENT 650

CERTIFICATE OF LOCATION OF FOUND MONUMENT

East Quarter Corner of Section 8, Township 28 North, Range 23 West, County of Ramsey, State of Minnesota.

At the corner location shown on the sketch

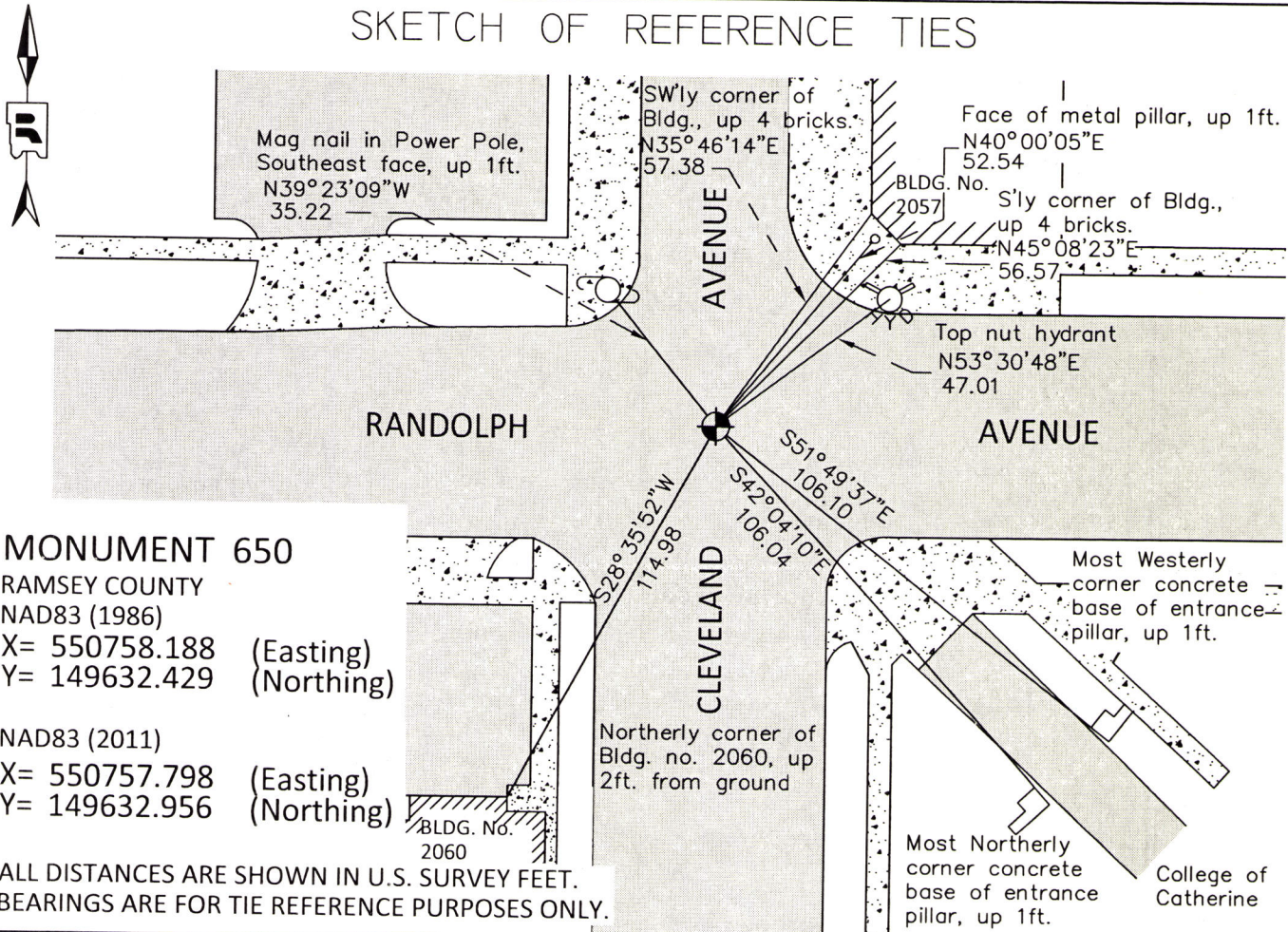
On May 20, 2015 found a cast iron monument, flush with roadway.

left monument as found raised/lowered monument removed monument (explain)

On September 25, 2015 placed a 20 inch "Ramsey County" cast iron monument.

Cast iron manhole assembly to be set by others.

SKETCH OF REFERENCE TIES



Statements of evidence relative to this corner are on the following page.

I hereby certify that this survey, plan, or report was prepared by me or under my direct supervision, that I am a duly Licensed Land Surveyor under the laws of the state of Minnesota, and that this certificate is correct and complete to the best of my knowledge and belief.

Daniel D. Baar 6-20-16
 Daniel D. Baar Date
 Deputy County Surveyor
 Minnesota License No. 45816

OFFICE OF COUNTY SURVEYOR
 County of Ramsey

I hereby certify that this document was filed in the County Surveyor's office this 20th day of June, 20 16.

Craig W. Hinzman
 Craig W. Hinzman, L.S.
 Ramsey County Surveyor

MONUMENT 650

East Quarter Corner of Section 8, Township 28 North, Range 23 West

October, 1847	Set Quarter Section Post; White Oak 18 S5°E 1.11, Bur Oak 12 S20°W 74. Isaac Higbee, Deputy Surveyor
March, 1888	Monument set by R.J. Johnson in place of old boulder. City of St. Paul Surveyor's Office
February 19, 1934	Placed ties on the Granite Monument at grade. City of St. Paul Surveyor's Office
February 16, 1972	Monument out, two ties still existing. City of St. Paul Surveyor's Office
May 16, 2006	Position on IRON PIN established by RTK-VRS GPS. City of St. Paul Surveyor's Office
June 29, 2006	Set Cast Iron Monument labeled "Quarter Corner" to grade in concrete. Placed ties. City of St. Paul Surveyor's Office
July 11, 2006	Found Cast Iron Monument labeled "Quarter Corner". Photos taken. City of St. Paul Surveyor's Office
December 24, 2012	Found Cast Iron Monument at street Grade. City of St. Paul Surveyor's office
May 20, 2015	Checked ties on monument. Tied out monument for removal during road construction. Ramsey County Surveyor's Office
September 25, 2015	Monument removed. Set new 20 inch "Ramsey County" cast iron monument using construction offsets and local ties. Cast iron manhole assembly to be set by others. Tied out monument and performed 50-minute static GPS observation. Ramsey County Surveyor's Office