

# MONUMENT 627

## CERTIFICATE OF LOCATION OF GOVERNMENT CORNER

Northeast Corner of Section 8, Township 28 North, Range 23 West, County of Ramsey, State of Minnesota.

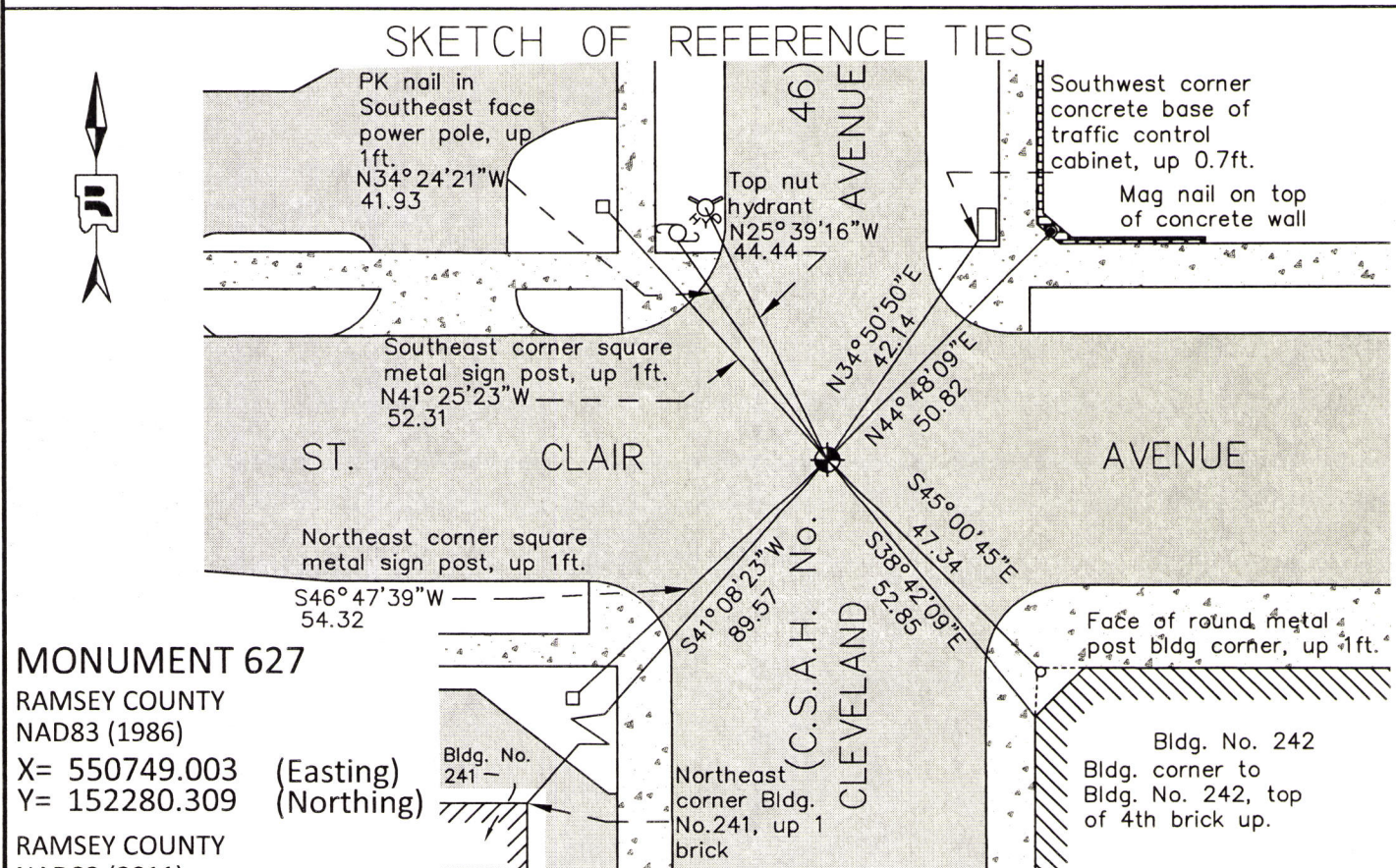
At the corner location shown on the sketch

On May 21, 2015 found a cast iron monument, 0.02 feet below asphalt grade.

Tied monument for removal during road reconstruction.

left monument as found       raised/lowered monument       removed monument (explain)

On September 25, 2015 placed a a 20 inch cast iron monument lettered "Ramsey County"; Cast iron manhole assembly placed over cast iron monument by others.



### MONUMENT 627

RAMSEY COUNTY  
NAD83 (1986)

X= 550749.003 (Easting)  
Y= 152280.309 (Northing)

RAMSEY COUNTY  
NAD83 (2011)

X= 550748.794 (Easting)  
Y= 152280.779 (Northing)

ALL DISTANCES ARE SHOWN IN U.S. SURVEY FEET.  
BEARINGS ARE FOR TIE REFERENCE PURPOSES ONLY.

Statements of evidence relative to this corner are on the following page.

I hereby certify that this survey, plan, or report was prepared by me or under my direct supervision, that I am a duly Licensed Land Surveyor under the laws of the state of Minnesota, and that this certificate is correct and complete to the best of my knowledge and belief.

Daniel D. Baar      6-7-16  
Daniel D. Baar      Date  
Deputy County Surveyor  
Minnesota License No. 45816

OFFICE OF COUNTY SURVEYOR  
County of Ramsey

I hereby certify that this document was filed in the County Surveyor's office this 7th day of June, 20 16.

Craig W. Hinzman  
Craig W. Hinzman, L.S.  
Ramsey County Surveyor



# MONUMENT 627

Northeast Corner of Section 8, Township 28 North, Range 23 West

October 30, 1847	Set post corner to Sections 4, 5, 8, and 9 (Bur Oak 22 N67°W 24, Bur Oak 14 S27°E 2.41) Isaac Higbee, Deputy Surveyor
October, 1888	Granite Monument set by J.H. Armstrong replacing found boulder. City of St. Paul Surveyor's Office
December 23, 1891	Monument reset by J.B. Irvine. City of St. Paul Surveyor's Office
February 9, 1934	Placed ties on granite monument at grade. City of St. Paul Surveyor's Office
July 17, 1972	Found granite monument. Set cast iron pipe over granite monument. City of St. Paul Surveyor's Office
July 18, 1972	Removed cast iron pipe. Set cast iron monument to grade. Granite monument left below. City of St. Paul Surveyor's Office
July 19, 1972	Placed ties. City of St. Paul Surveyor's Office
January 21, 1985	Set small PK nail over cast iron monument. City of St. Paul Surveyor's Office
July 14, 1994	Found 3/4 inch iron pin at grade; left monument as found. Certificate of location signed by William Cutting. City of St. Paul Surveyor's Office
March 21, 1996	Found iron pin. City of St. Paul Surveyor's Office
March, 2000	Found iron pin at grade; marked for aerial photography. City of St. Paul Surveyor's Office
May 16, 2006	Found iron pin at grade. Photos taken. Position established by RTK-VRS GPS. City of St. Paul Surveyor's Office
May 31, 2006	Set cast iron monument in concrete. Photos taken. City of St. Paul Surveyor's Office
June 21, 2006	Performed measurements on Cleveland Avenue monuments between St. Clair Avenue and Jefferson Avenue. City of St. Paul Surveyor's Office
August 17, 2006	Found cast iron monument 0.02ft. below grade. Set ties on monument. City of St. Paul Surveyor's Office
August 21, 2006	Photos of monument taken. City of St. Paul Surveyor's Office
August 28, 2006	Certificate of Location signed by Michael Murphy. City of St. Paul Surveyor's Office

# MONUMENT 627

Northeast Corner of Section 8, Township 28 North, Range 23 West

- October 23, 2012 Found cast iron monument at grade; photos taken.  
City of St. Paul Surveyor's Office
- May 21, 2015 Checked local ties using Certificate of Location dated August 20, 2006. Set construction offsets for monument removal during reconstruction of Cleveland Avenue. Ramsey County Surveyor's Office
- September 25, 2015 Set a 20 inch "Ramsey County" cast iron monument; cast iron manhole assembly to be set by others during bituminous overlay of Cleveland Avenue. Tied monument. Ramsey County Surveyor's Office