

# MONUMENT 57

## CERTIFICATE OF LOCATION OF GOVERNMENT CORNER

Northeast Corner of Section 9, Township 30 North, Range 23 West, County of Ramsey, State of Minnesota.

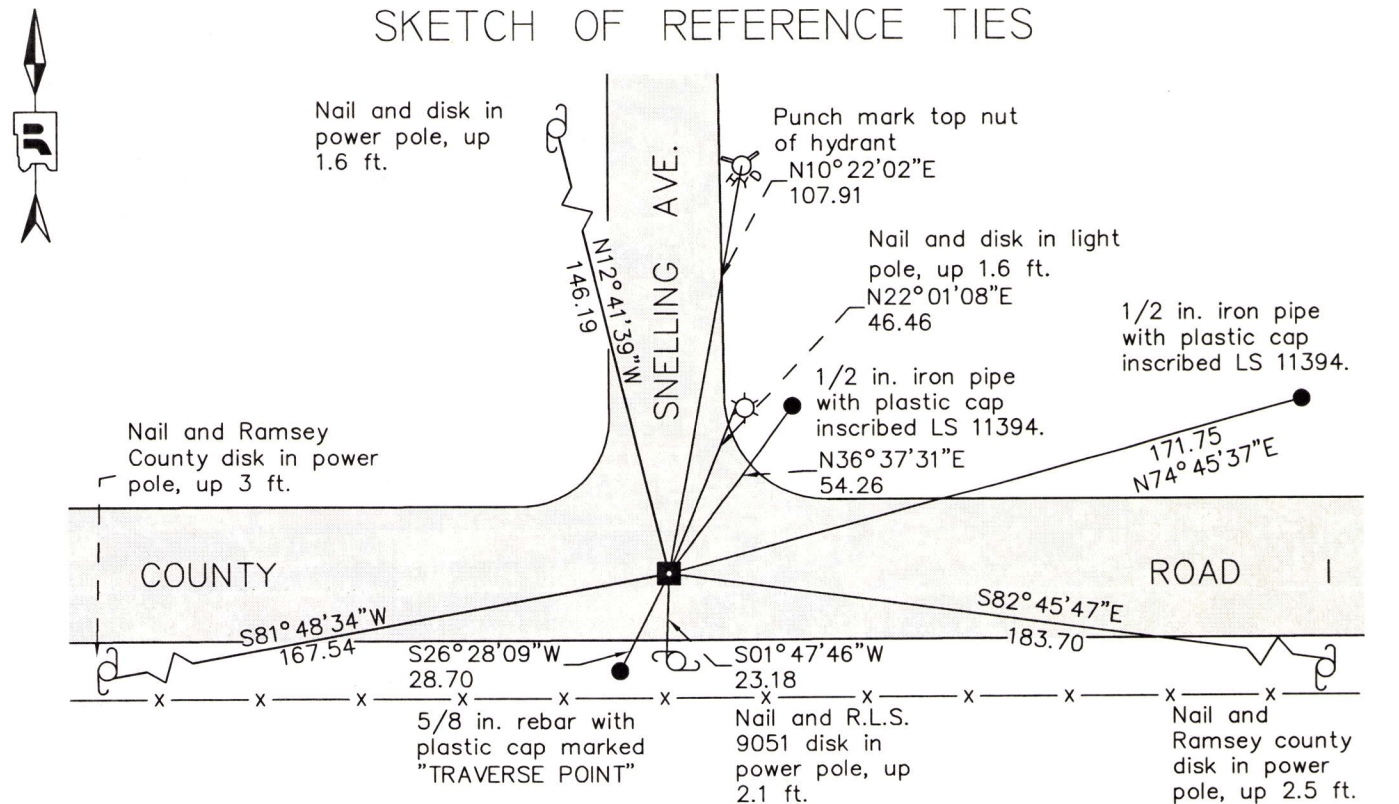
At the corner location shown on the sketch

On June 17, 2014 found an 8 in. x 8 in. granite monument, within a cast iron manhole assembly.

left monument as found       raised/lowered monument       removed monument (explain)

On \_\_\_\_\_ placed a \_\_\_\_\_

### SKETCH OF REFERENCE TIES



### MONUMENT 57

RAMSEY COUNTY  
 NAD83 (1986)      NAD83 (1996)  
 X= 555562.317 (Easting)      X= 555561.913 (Easting)  
 Y= 215614.412 (Northing)      Y= 215615.091 (Northing)

ALL DISTANCES ARE SHOWN IN U.S. SURVEY FEET. BEARINGS ARE FOR TIE REFERENCE PURPOSES ONLY.

Statements of evidence relative to this corner are on the following page.

I hereby certify that this survey, plan, or report was prepared by me or under my direct supervision, that I am a duly Licensed Land Surveyor under the laws of the state of Minnesota, and that this certificate is correct and complete to the best of my knowledge and belief.

Daniel D. Baar      6-10-15  
 Daniel D. Baar      Date  
 Deputy County Surveyor  
 Minnesota License No. 45816

OFFICE OF COUNTY SURVEYOR  
 County of Ramsey

I hereby certify that this document was filed in the County Surveyor's office this 10th day of June, 20 15.

Craig W. Hinzman  
 Craig W. Hinzman, L.S.  
 Ramsey County Surveyor

# MONUMENT 57

Northeast Corner of Section 9, Township 30 North, Range 23 West

December 16, 1847	Set post Corner to Sections 3, 4, 9, & 10, B. Oak 20 N16°W 63, "Do" (B. Oak) 10 S85°W 83, Isaac N. Higbee, Deputy Surveyor.
March 17, 1898	In establishing the Southeast Corner of Section 9 both Government witness stumps, fixed Corner and tied it, Ramsey County Resurvey.
July 11, 1898	Set monument, Ramsey County Surveyor's Office.
December, 1943	Checked monument, Ramsey County Surveyor's Office.
January, 1946	Checked monument, Ramsey County Surveyor's Office.
November, 1947	Checked monument, Ramsey County Surveyor's Office.
November 1950	Checked monument, Ramsey County Surveyor's Office.
March, 1952	Checked monument, Ramsey County Surveyor's Office.
February, 1954	Checked monument, Ramsey County Surveyor's Office.
November 20, 1974	Found railroad spike. Dug down 0.5 ft. to granite monument. Placed 5 in. cast iron monument, Ramsey County Surveyor's Office.
January 28, 1976	Tied monument, Ramsey County Surveyor's Office.
February 2, 1993	Retied monument, Ramsey County Surveyor's Office.
July 2, 2003	Retied monument, Ramsey County Surveyor's Office.
April 06, 2005	Cast iron monument removed for road milling project, Ramsey County Surveyor's Office.
June 20, 2005	Found granite monument within a cast iron manhole assembly, Ramsey County Surveyor's Office.
June 21, 2007	Monument tied out, Ramsey County Surveyor's Office.
April 30, 2012	Retied granite monument within a cast iron manhole assembly; performed a static GPS observation, Ramsey County Surveyor's Office.
June 17, 2014	Checked granite monument within a cast iron manhole assembly and condition of ties; performed RTK GPS observations, Ramsey County Surveyor's Office.