

MONUMENT 397

CERTIFICATE OF LOCATION OF FOUND MONUMENT

Northeast Corner of Section 17, Township 29 North, Range 23 West, County of Ramsey, State of Minnesota.

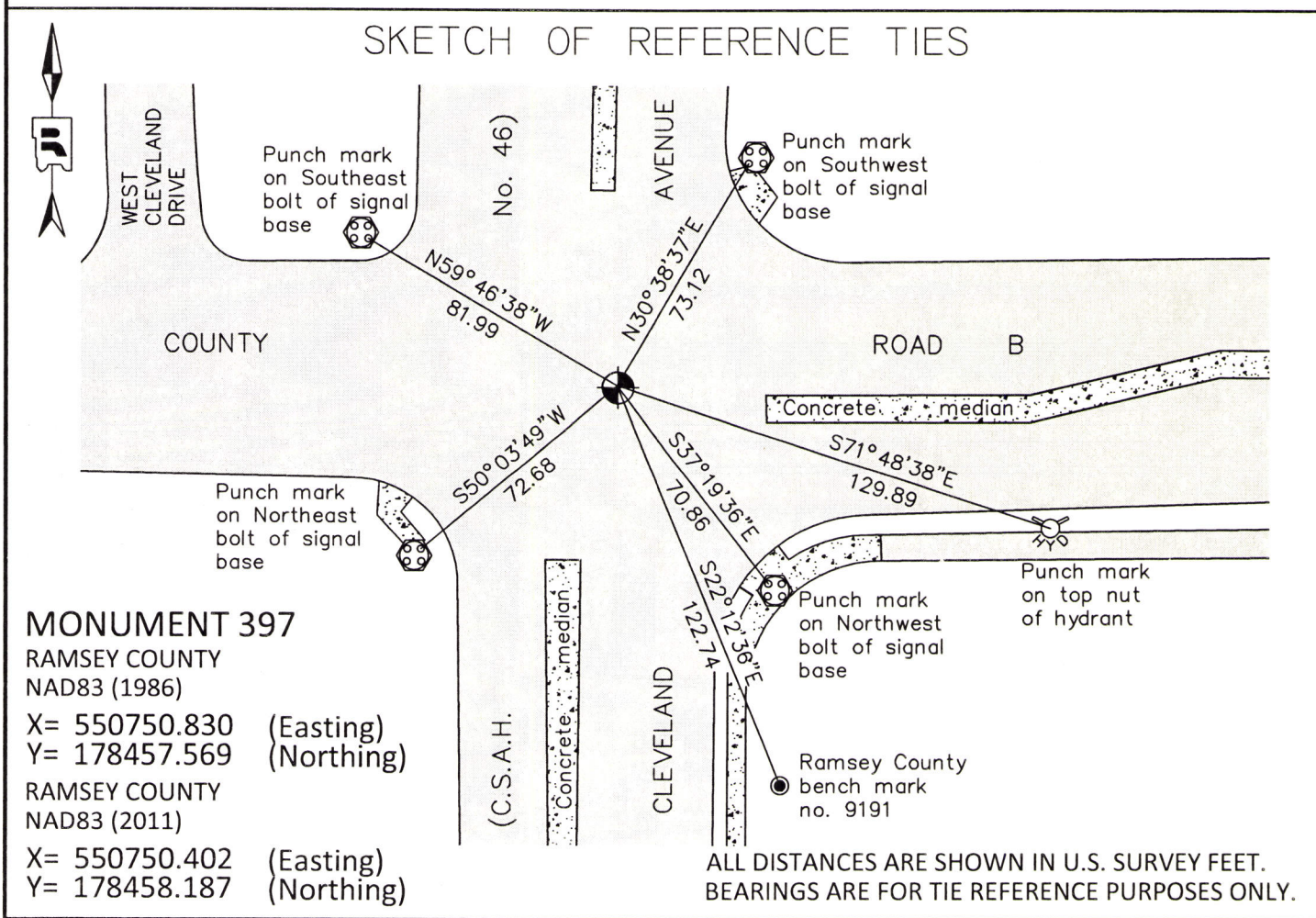
At the corner location shown on the sketch

On July 31, 2015 found a cast iron monument, flush; tied for removal during road construction.

left monument as found raised/lowered monument removed monument (explain)

On August 5, 2015 placed a 20 inch Ramsey County cast iron monument; tied.

Cast iron manhole assembly to be set by others.



Statements of evidence relative to this corner are on the following page.

I hereby certify that this survey, plan, or report was prepared by me or under my direct supervision, that I am a duly Licensed Land Surveyor under the laws of the state of Minnesota, and that this certificate is correct and complete to the best of my knowledge and belief.

Daniel D. Baar 6-7-16
 Daniel D. Baar Date
 Deputy County Surveyor
 Minnesota License No. 45816

OFFICE OF COUNTY SURVEYOR
 County of Ramsey

I hereby certify that this document was filed in the County Surveyor's office this 7th day of June, 2016.

Craig W. Hinzman
 Craig W. Hinzman, L.S.
 Ramsey County Surveyor

MONUMENT 397

Northeast Corner of Section 17, Township 29 North, Range 23 West

November 3, 1847	Set post Corner to Sections 8, 9, 16, & 17, W. Oak 15 S19°W 42, "Do" (W. Oak) 10 S44°E 26. Isaac Higbee, Deputy Surveyor
August 17, 1899	In establishing the Northeast Corner of Section 17, found old stake at Section Corner, Government witness trees gone; tied it and set monument. Ramsey County Resurvey
November, 1933	Checked monument. Ramsey County Engineer's Office
May 9, 1963	Tied monument. Ramsey County Engineer's Office
June 25, 1975	Found a broken cast iron monument and placed a full cast iron monument. Ramsey County Surveyor's Office
July 29, 1977	Checked monument. Ramsey County Surveyor's Office
January 16, 1991	Tied monument. Ramsey County Surveyor's Office
July 23, 2002	Retied monument. Ramsey County Surveyor's Office
September 5, 2007	Retied monument. Ramsey County Surveyor's Office
August 15, 2012	Checked condition of cast iron monument, down 0.1 ft., in bituminous road; Retied. Ramsey County Surveyor's Office
July 31, 2015	Tied cast iron monument for removal during road reconstruction. Ramsey County Surveyor's Office
August 5, 2015	Set new 20 inch "Ramsey County" cast iron monument using construction ties. Tied monument. Manhole assembly to be set by others. Ramsey County Surveyor's Office