

MONUMENT 380

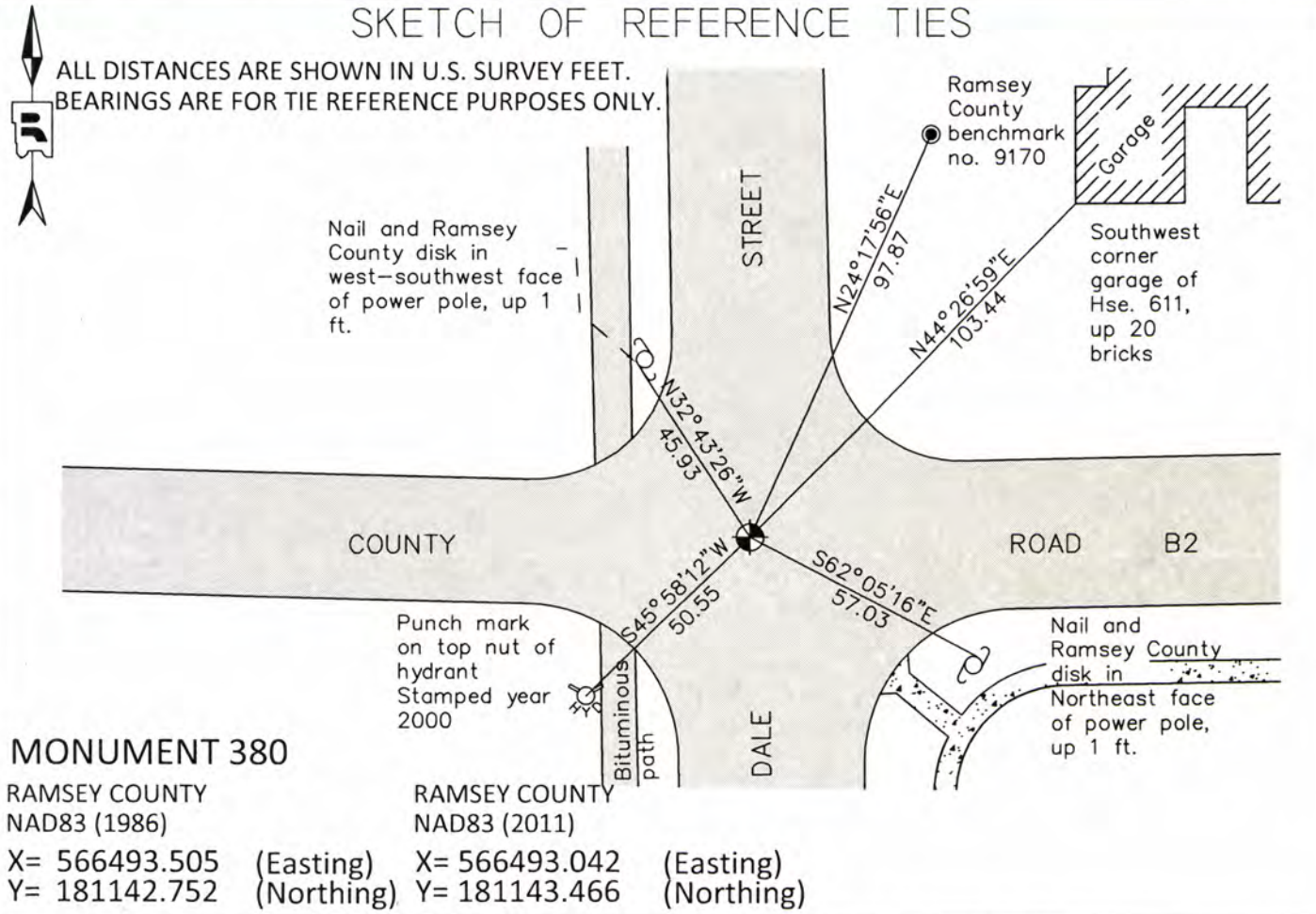
CERTIFICATE OF LOCATION OF GOVERNMENT CORNER

East Quarter Corner of Section 11, Township 29 North, Range 23 West, County of Ramsey, State of Minnesota.

At the corner location shown on the sketch

- On May 15, 2015 found a "Ramsey County" cast iron monument flush in bituminous road.
 Tied out monument for removal during road reconstruction.
- left monument as found
 raised/lowered monument
 removed monument (explain)
- On August 31, 2015 placed a 20 inch "Ramsey County" cast iron monument, and lowered 8 inches. Set monument using construction offsets and local ties. Manhole assembly to be set by others.

SKETCH OF REFERENCE TIES



Statements of evidence relative to this corner are on the following page.

I hereby certify that this survey, plan, or report was prepared by me or under my direct supervision, that I am a duly Licensed Land Surveyor under the laws of the state of Minnesota, and that this certificate is correct and complete to the best of my knowledge and belief.

Daniel D. Baar 9-13-16
 Daniel D. Baar Date
 Deputy County Surveyor
 Minnesota License No. 45816

OFFICE OF COUNTY SURVEYOR
 County of Ramsey

I hereby certify that this document was filed in the County Surveyor's office this 13th day of September, 20 16.

Craig W. Hinzman
 Craig W. Hinzman, L.S.
 Ramsey County Surveyor

MONUMENT 380

East Quarter Corner of Section 11, Township 29 North, Range 23 West

November 3, 1847	Set 1/4 Section post, Bur Oak 10 N83°W 59, "Do" (Bur Oak) 9 S62°E 88. Isaac Higbee, Deputy Surveyor
Unkown Date, 1895	Replaced 1/4 Section Corner between Sections 11 and 12. This Corner was fixed when old Government witness trees were standing and retied by Gates A. Johnson Jr., County Surveyor.
May 1, 1895	Set monument. Ramsey County Resurvey
September, 1938	Checked monument. Ramsey County Engineering Office
March, 1959	New ties. Ramsey County Engineering Office
October 4, 1963	REINHARDT ADDITION plat shows a granite monument at described location.
June 19, 1974	Found a granite monument down 0.2 ft. and tied. Ramsey County Surveyor's Office
October 10, 1974	Placed a cast iron cap and bolt monument. Ramsey County Surveyor's Office
August 29, 1988	Cast iron cap missing; tied out monument. Ramsey County Surveyor's Office
August 10, 1990	Checked monument. Ramsey County Surveyor's Office
July, 1991	Granite monument removed by Maintenance Department. Ramsey County Surveyor's Office
September 3, 1991	Relocated position and set 4 P.K. nails. Ramsey County Surveyor's Office
September 4, 1991	Set a 20 in. cast iron monument flush. Ramsey County Surveyor's Office
July 18, 2002	Tied monument. Ramsey County Surveyor's Office
August 3, 2007	Retied monument. Ramsey County Surveyor's Office

MONUMENT 380

East Quarter Corner of Section 11, Township 29 North, Range 23 West

- | | |
|-----------------|--|
| June 25, 2012 | Checked condition of cast iron monument, flush in bituminous road, and tied. Performed 50 minute static observation.
Ramsey County Surveyor's Office |
| May 15, 2015 | Tied out monument for removal during road reconstruction.
Ramsey County Surveyor's Office |
| August 31, 2015 | Cast iron monument removed. Set a new 20 inch "Ramsey County" cast iron monument using construction offsets and local ties. Cast iron manhole assembly over monument to be set by others. Tied out monument. Performed a 50 minute static observation. Ramsey County Surveyor's Office |