

MONUMENT 332

CERTIFICATE OF LOCATION OF GOVERNMENT CORNER

East Quarter Corner of Section 3, Township 29 North, Range 23 West, County of Ramsey, State of Minnesota.

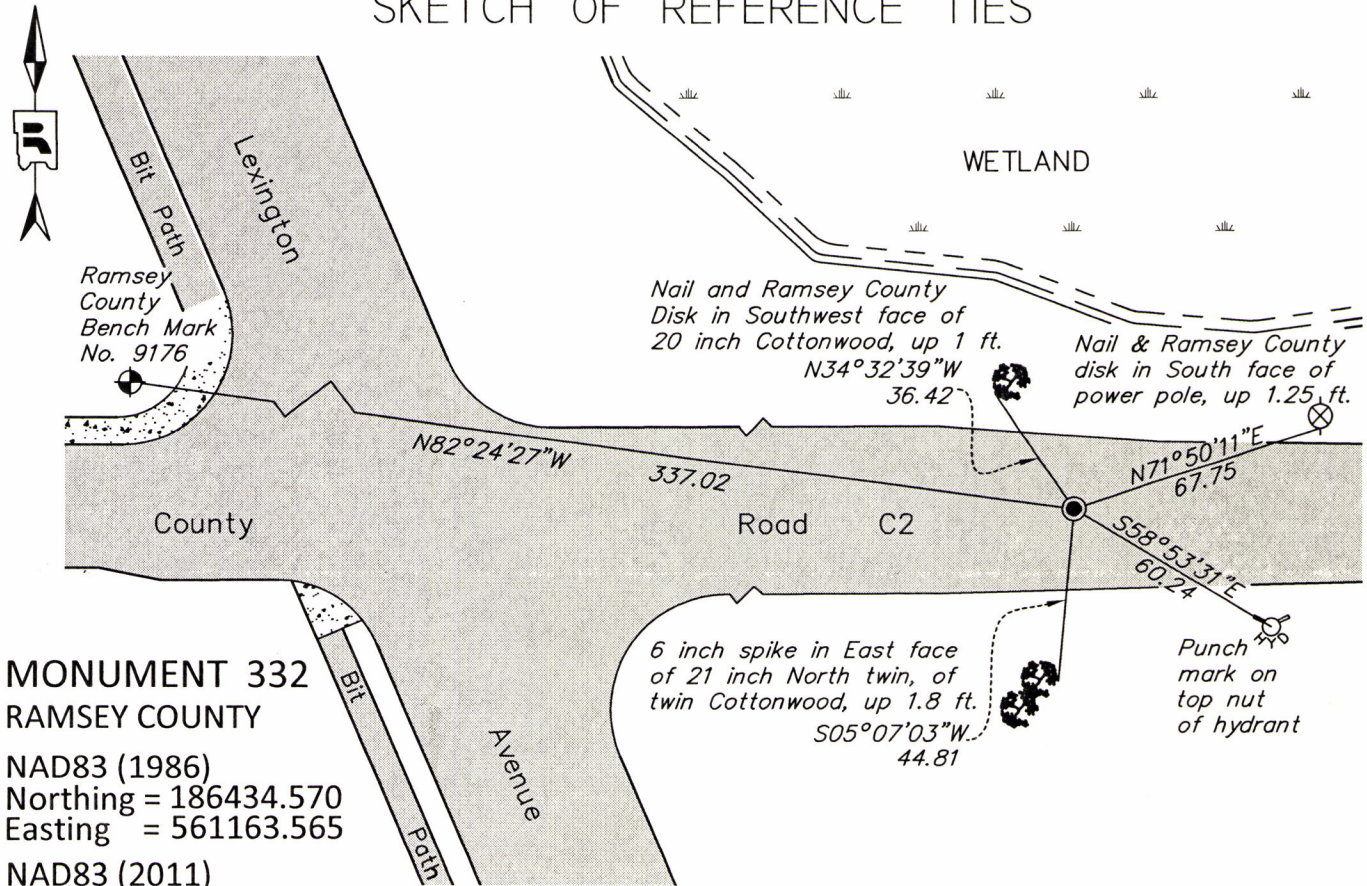
At the corner location shown on the sketch

On May 19, 2016 found a cast iron monument flush in bituminous road.

left monument as found raised/lowered monument removed monument (explain)

On _____ placed a _____

SKETCH OF REFERENCE TIES



**MONUMENT 332
RAMSEY COUNTY**
NAD83 (1986)
Northing = 186434.570
Easting = 561163.565
NAD83 (2011)
Northing = 186435.085
Easting = 561163.133

ALL DISTANCES ARE SHOWN IN U.S. SURVEY FEET.
BEARINGS ARE FOR TIE REFERENCE PURPOSES ONLY.

Statements of evidence relative to this corner are on the following page.

I hereby certify that this survey, plan, or report was prepared by me or under my direct supervision, that I am a duly Licensed Land Surveyor under the laws of the state of Minnesota, and that this certificate is correct and complete to the best of my knowledge and belief.

Daniel D. Baar 1-4-17
Daniel D. Baar Date
Deputy County Surveyor
Minnesota License No. 45816

OFFICE OF COUNTY SURVEYOR
County of Ramsey

I hereby certify that this document was filed in the County Surveyor's office this 4th day of January, 20 17.

Craig W. Hinzman
Craig W. Hinzman, L.S.
Ramsey County Surveyor

MONUMENT 332

East Quarter Corner of Section 3, Township 29 North, Range 23 West

November 3, 1847	Set 1/4 Section post, W. Oak 18 S 34 1/2°E 2.67, "Do" 10 S 31 1/2°W 2.60. Isaac Higbee, Deputy Surveyor
December, 1896	The 1/4 Corner between Sections 2 and 3 was fixed by J.H. Armstrong. Ramsey County Remonumentation Survey
May, 1897	Set monument, Ramsey County Remonumentation Survey
October, 1944	Checked monument. Ramsey County Engineering Office
September 26, 1975	Found a granite monument down 0.89 ft. Set a 10 in. cast iron monument over granite monument. Ramsey County Surveyor's Office
April 17, 1977	Checked monument. Ramsey County Surveyor's Office
September, 1980	Monument destroyed by construction. Set a 20 in. cast iron monument. Ramsey County Surveyor's Office
June 5, 1981	Tied monument. Ramsey County Surveyor's Office
January 18, 1991	Retied monument. Ramsey County Surveyor's Office
July 17, 2002	Retied monument. Ramsey County Surveyor's Office
October 27, 2005	Monument in need of repair; removed loose bituminous from around the monument and placed concrete around the top of the monument in bituminous road surface. Ramsey County Surveyor's Office
August 24, 2007	Retied monument. Ramsey County Surveyor's Office
June 12, 2012	Checked condition of cast iron monument, flush in bituminous road, and its ties. Ramsey County Surveyor's Office
April 2, 2015	Performed 50 minute static observations on two control points on the East side of Lexington Avenue. Turned angles and distances from control points to Monument 332 to obtain NAD 83 (2011) coordinates on Monument. Ramsey County Surveyor's Office
May 19, 2016	Found a Cast Iron Monument Flush in Bituminous Road. Tied out monument for potential removal during City Mill and Overlay project. Checked ties using Certificate of Location dated June 12, 2012. All ties present and in good condition. Ramsey County Surveyor's Office.
August 26, 2016	Checked Monument after City Mill and Overlay project. Construction crews milled around monument and left it undisturbed. Ramsey County Surveyor's Office