

MONUMENT 259

CERTIFICATE OF LOCATION OF GOVERNMENT CORNER

Northeast Corner of Section 34, Township 30 North, Range 23 West, County of Ramsey, State of Minnesota.

At the corner location shown on the sketch

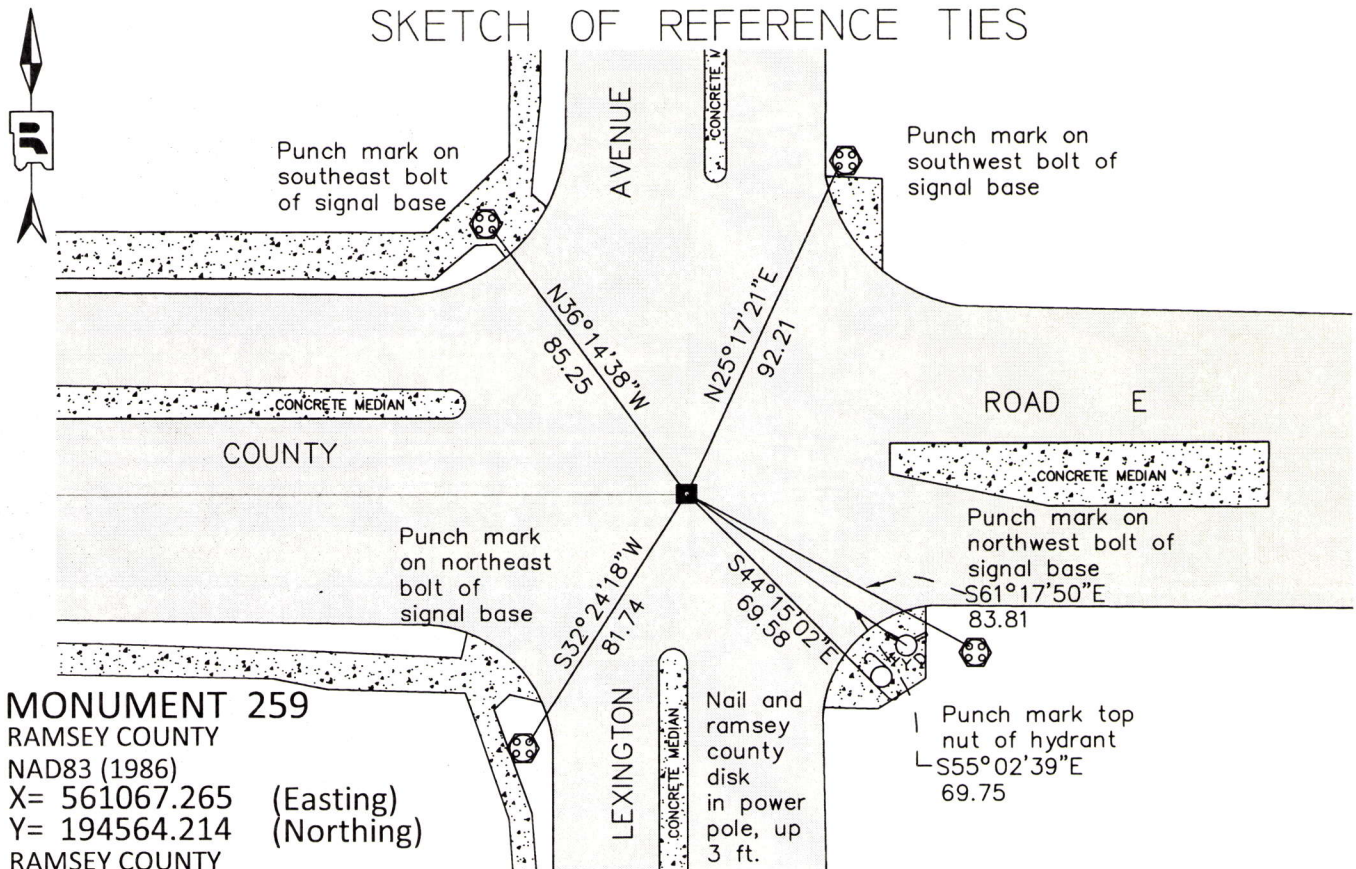
On November 3, 2015 found a granite monument inside a cast iron manhole assembly.

Removal of old signal system during construction destroyed previous ties. Set new ties.

left monument as found raised/lowered monument removed monument (explain)

On _____ placed a _____

SKETCH OF REFERENCE TIES



MONUMENT 259
 RAMSEY COUNTY
 NAD83 (1986)
 X= 561067.265 (Easting)
 Y= 194564.214 (Northing)
 RAMSEY COUNTY
 NAD83 (2011)
 X= 561066.903 (Easting)
 Y= 194564.964 (Northing)

ALL DISTANCES ARE SHOWN IN U.S. SURVEY FEET.
 BEARINGS ARE FOR TIE REFERENCE PURPOSES ONLY.

Statements of evidence relative to this corner are on the following page.

I hereby certify that this survey, plan, or report was prepared by me or under my direct supervision, that I am a duly Licensed Land Surveyor under the laws of the state of Minnesota, and that this certificate is correct and complete to the best of my knowledge and belief.

Daniel D. Baar 3-7-16
 Daniel D. Baar Date
 Deputy County Surveyor
 Minnesota License No. 45816

OFFICE OF COUNTY SURVEYOR
 County of Ramsey

I hereby certify that this document was filed in the County Surveyor's office this 7th day of March, 20 16.

Craig W. Hinzman
 Craig W. Hinzman, L.S.
 Ramsey County Surveyor

MONUMENT 259

Northeast Corner of Section 34, Township 30 North, Range 23 West

December 16, 1847	Set post Corner to Sections 26, 27, 34, and 35; White Oak 18 N85W 91, White Oak 18 S31E 152 Isaac Higbee, Deputy Surveyor
October, 1895	In establishing the Northeast Corner of Section 34, measured North from Town Line (or Southeast Corner of Section 34) the Government distances and fixed Corner. One Government witness stump. Tied it and set monument. Ramsey County Resurvey
November, 1943	Checked monument. Ramsey County Engineering Office
May, 1970	Checked monument. Ramsey County Engineering Office
May 25, 1976	Found a granite monument down 0.79 ft.; set a cast iron monument over granite. Ramsey County Surveyor's Office
Unknown Date	Monument destroyed during road construction; cast iron monument set. No date given in field book. Ramsey County Surveyor's Office
February 29, 1984	Tied monument. Ramsey County Surveyor's Office
July, 1987	Monument removed for road milling project. Ramsey County Surveyor's Office
Unknown Date	Granite monument found down +/-0.75 ft., short cast iron placed over granite, no date given in field book. Ramsey County Surveyor's Office
December 1, 1998	Tied monument. Ramsey County Surveyor's Office
April 26, 2000	Tied monument for construction. Ramsey County Surveyor's Office
April 28, 2000	Removed short cast iron monument; granite down +/-0.7 ft. Ramsey County Surveyor's Office
October, 2000	Placed a cast iron manhole assembly over monument. Ramsey County Surveyor's Office
October 25, 2005	Tied monument. Ramsey County Surveyor's Office
July 26, 2010	Retied monument. Ramsey County Surveyor's Office
November 3, 2015	Found granite monument in manhole. Riser was placed in manhole due to pavement being raised during construction. Old signal system was replaced destroying existing ties. Set new ties. Ramsey County Surveyor's Office