

MONUMENT 224

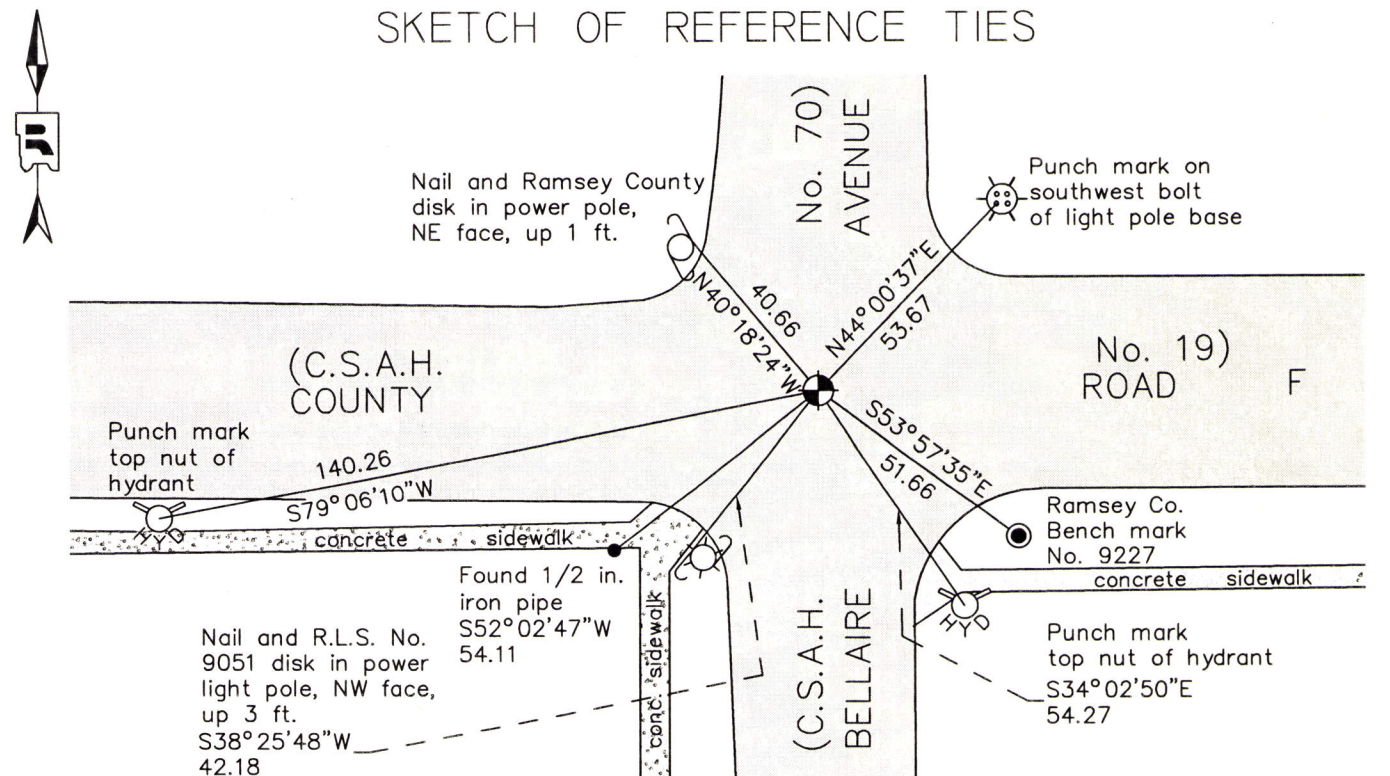
CERTIFICATE OF LOCATION OF GOVERNMENT CORNER

North Quarter Corner of Section 25 , Township 30 North, Range 22 West, County of Ramsey, State of Minnesota.

At the corner location shown on the sketch

- On May 13, 2015 found a cast iron monument. Tied out monument for removal during road reconstruction.
- left monument as found
 raised/lowered monument
 removed monument (explain)
- On July 20, 2015 placed a cast iron monument in a cast iron manhole assembly; Replaced monument removed during road reconstruction.

SKETCH OF REFERENCE TIES



MONUMENT 224

RAMSEY COUNTY
NAD83 (1986)

RAMSEY COUNTY
NAD83 (2011)

ALL DISTANCES ARE SHOWN IN U.S. SURVEY FEET.
BEARINGS ARE FOR TIE REFERENCE PURPOSES ONLY.

X= 600349.554 (Easting)	X= 600349.266 (Easting)
Y= 199994.148 (Northing)	Y= 199994.941 (Northing)

Statements of evidence relative to this corner are on the following page.

I hereby certify that this survey, plan, or report was prepared by me or under my direct supervision, that I am a duly Licensed Land Surveyor under the laws of the state of Minnesota, and that this certificate is correct and complete to the best of my knowledge and belief.

Daniel D. Baar 6-7-16
 Daniel D. Baar Date
 Deputy County Surveyor
 Minnesota License No. 45816

OFFICE OF COUNTY SURVEYOR
County of Ramsey

I hereby certify that this document was filed in the County Surveyor's office this 7th day of June, 20 16.

Craig W. Hinzman
 Craig W. Hinzman, L.S.
 Ramsey County Surveyor

MONUMENT 224

North Quarter Corner of Section 25, Township 30 North, Range 22 West

December 7, 1847	Set Quarter Section post; Bur Oak 12 N60W 38, Bur Oak 13 S40W 138. Isaac Higbee, Deputy Surveyor
September 27, 1897	The Quarter Corner between Sections 24 and 25 was fixed. Found old stake. Government witness trees gone. Ramsey County Resurvey
July 20, 1898	Set monument. Ramsey County Resurvey
October, 1939	Monument checked. Ramsey County Engineering Office
February, 1946	Monument checked. Ramsey County Engineering Office
May 28, 1974	Found a granite monument down 0.3 ft. Ramsey County Surveyor's Office
June 4, 1974	Placed a cast iron cap and bolt monument over granite. Ramsey County Surveyor's Office
June 25, 1974	Tied monument. Ramsey County Surveyor's Office
January 29, 1976	Retied monument. Ramsey County Surveyor's Office
June 25, 1991	Checked ties. Ramsey County Surveyor's Office
June 11, 1993	Monument removed for maintenance. Ramsey County Surveyor's Office
September 3, 1993	Placed P.K. nail at location and tied. Ramsey County Surveyor's Office
October, 1994	Set a 20 in. cast iron monument. Ramsey County Surveyor's Office
June 12, 1998	Short ties checked. Ramsey County Surveyor's Office
March 29, 2005	Tied monument. Ramsey County Surveyor's Office
July 6, 2010	Retied monument. Ramsey County Surveyor's Office
May 13, 2015	Found a cast iron monument flush in the road. Tied monument for removal during road reconstruction. Ramsey County Surveyor's Office
July 20, 2015	Set a 20 inch "Ramsey County" cast iron monument within cast iron manhole assembly, using construction offsets and local ties to replace the monument which was removed during road reconstruction. Retied monument. Ramsey County Surveyor's Office