

MONUMENT 15SC

CERTIFICATE OF LOCATION OF GOVERNMENT CORNER

Northeast Corner (calculated Standard Corner) on 3rd Correction Line of Section 6,
Township 30 North, Range 22 West, County of Ramsey, State of Minnesota.

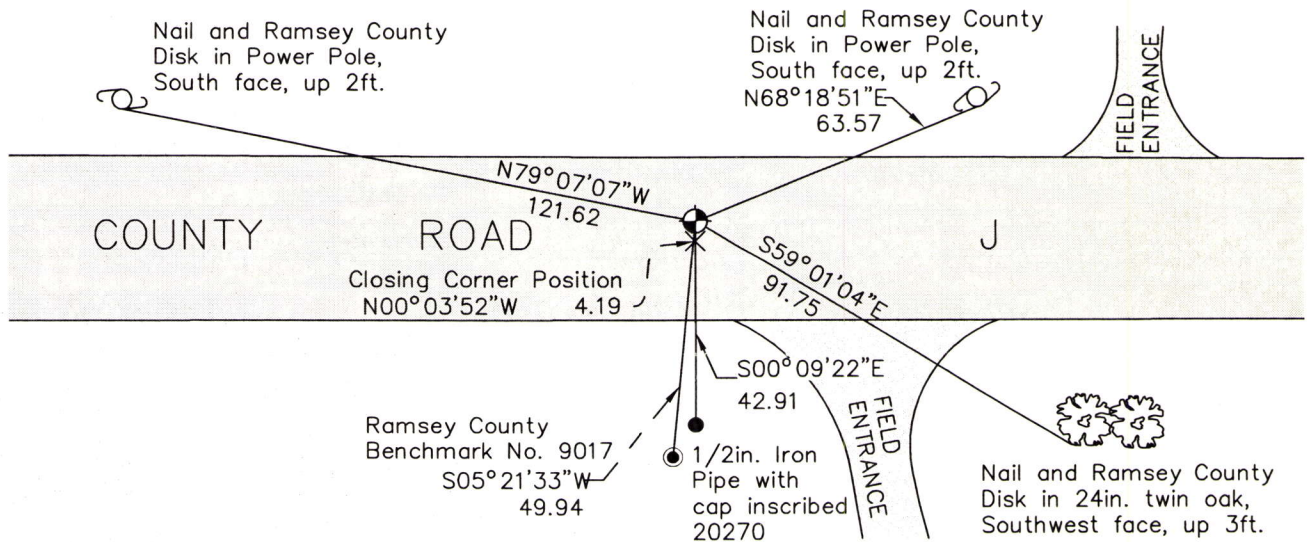
At the corner location shown on the sketch

On September 10, 2015 found a cast iron monument, marked "3RD CORRECTION LINE", flush.

left monument as found raised/lowered monument removed monument (explain)

On _____ placed a _____

SKETCH OF REFERENCE TIES



MONUMENT 15SC

RAMSEY COUNTY
NAD83 (1986)

X= 576530.069 (Easting)
Y= 221539.599 (Northing)

ALL DISTANCES ARE SHOWN IN U.S. SURVEY FEET.
BEARINGS ARE FOR TIE REFERENCE PURPOSES ONLY.

Statements of evidence relative to this corner are on the following page.

I hereby certify that this survey, plan, or report was prepared by me or under my direct supervision, that I am a duly Licensed Land Surveyor under the laws of the state of Minnesota, and that this certificate is correct and complete to the best of my knowledge and belief.

Daniel D. Baar 3-7-16
Date
Daniel D. Baar
Deputy County Surveyor
Minnesota License No. 45816

OFFICE OF COUNTY SURVEYOR
County of Ramsey

I hereby certify that this document was filed in the County Surveyor's office this 7th day of March, 2016.

Craig W. Hinzman
Craig W. Hinzman, L.S.
Ramsey County Surveyor

MONUMENT 15SC

Northeast Corner (calculated Standard Corner) on 3rd Correction Line of
Section 6, Township 30 North, Range 22 West.

December 4, 1847	Intersect 3rd correction line 18.30 links East of 1/4 Section Corner on South side of Sec. 33, T31N, R22W, 4th Mer. Set post corner to Sections 5 and 6 (White Oak, 12 S17W 1.50, Bur Oak 8 S21E 62). Isaac Higbee, Deputy Surveyor
June 5, 1940	Found stake. Placed monument. Ramsey County Engineer's Office
April, 1965	Found Granite monument. Ramsey County Engineer's Office
May 15 and 16, 1974.	Found a granite monument tipped, down 0.3 ft, also found 2 P.K. nails and a nail and disk, none of them located over tipped granite (all were east of the tipped granite monument), did not tie out. Dug out granite and uprighted, but monument did not fit ties. Uprighting the granite monument moved the top of the monument to the east. Ramsey County Surveyor's Office
July 25, 1975	Placed a cast iron cap. Ramsey County Surveyor's Office
March 22, 1976	Tied monument. Ramsey County Surveyor's Office
April, 1990	Tied monument for road construction. Ramsey County Surveyor's Office
May, 1990	Removed a cast iron cap. Ramsey County Surveyor's Office
September 5, 1990	Placed a 20 in. cast iron monument. Ramsey County Surveyor's Office
January 27, 1993	Retied monument. Ramsey County Surveyor's Office
July 27, 1995	Set a 20 in. cast iron monument marked, "3RD CORRECTION LINE", 4.19 ft. north of "Closing Corner" (original granite monument location). Monument set at the intersection of a line from the South Quarter Corner of Sec. 33, T31N, R22W to the Southeast Corner of Section 33, T31N, R22W with the East line (defined by closing corner) of Section 6, T30N, R22W. Ramsey County Surveyor's Office
September 25, 1998	Tied "3RD CORRECTION LINE" monument. Ramsey County Surveyor's Office
October 11, 2005	Retied "3RD CORRECTION LINE" monument. Ramsey County Surveyor's Office
July 13, 2010	Retied "3RD CORRECTION LINE" monument. Ramsey County Surveyor's Office
September 11, 2015	Retied "3RD CORRECTION LINE" monument. Ramsey County Surveyor's Office