

MONUMENT 133

CERTIFICATE OF LOCATION OF SECTION SUBDIVISION MONUMENT

Center of Section 15, Township 30 North, Range 23 West, County of Ramsey, State of Minnesota.

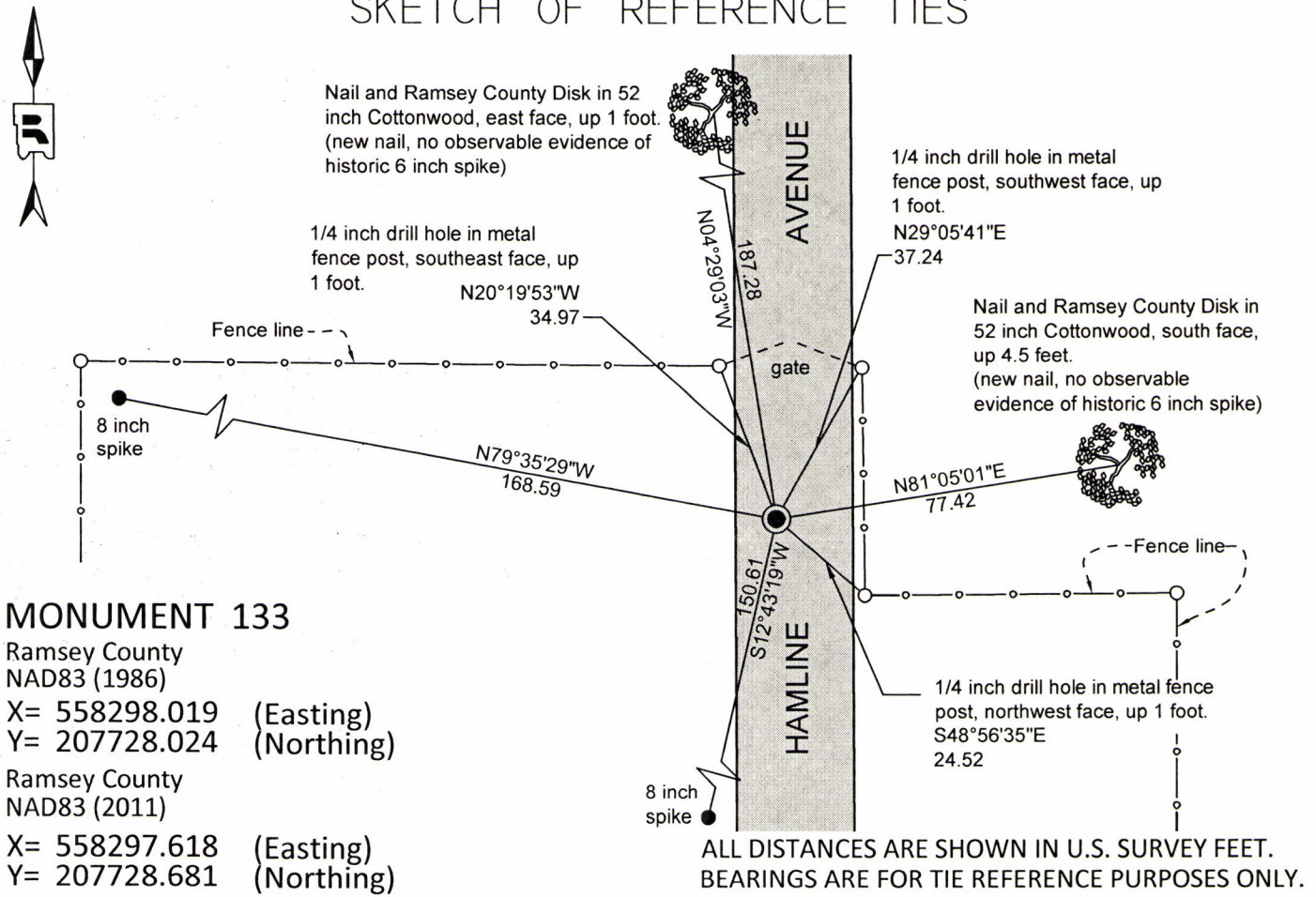
At the corner location shown on the sketch

On October 15, 2015 found a granite monument, down 0.5 feet in gravel road. Monument tied
for removal during road reconstruction.

left monument as found raised/lowered monument removed monument (explain)

On May 4, 2016 placed a new 20 inch cast iron monument marked "Ramsey County", tied
monument. Cast iron manhole assembly to be set by others.

SKETCH OF REFERENCE TIES



Statements of evidence relative to this corner are on the following page.

I hereby certify that this survey, plan, or report was prepared by me or under my direct supervision, that I am a duly Licensed Land Surveyor under the laws of the state of Minnesota, and that this certificate is correct and complete to the best of my knowledge and belief.

Daniel D. Baar 1-4-17
 Daniel D. Baar Date
 Deputy County Surveyor
 Minnesota License No. 45816

OFFICE OF COUNTY SURVEYOR
 County of Ramsey

I hereby certify that this document was filed in the County Surveyor's office this 4th day of January, 20 17.

Craig W. Hinzman
 Craig W. Hinzman, L.S.
 Ramsey County Surveyor

MONUMENT 133

Center of Section 15, Township 30, Range 23

Center of Section 15, Township 30 North, Range 23 West

March 3, 1897 Fixed the Center of Section 15 by intersection. Ramsey County Remonumentation Survey

August, 1900 Set monument. Ramsey County Remonumentation Survey

This granite monument is within the lands condemned by the Federal Government in 1942 for the construction of the Twin Cities Ordinance Plant (TCOP). There is no record of the recovery or maintenance of the granite monument from the time it was set in 1900 until July 26, 1991 when the Ramsey County Surveyor's Office recovered a 8 inch square granite monument. In researching the acquisition of part of the property known as "TCAAP" from the Federal Government to Ramsey County, the Ramsey County Surveyor's Office found Reservation Map 216-14-1, dated January 20, 1942, drawn by Smith, Hinchman & Grylls, Inc. and Toltz, King & Day Inc. showing monuments, baselines, and property lines of the Government owned property. The map does not describe the monument at the Center of Section 15, T30N, R23W. but does graphically depict a square monument symbol at the location that is the consistent with other labeled granite monuments shown on the map. The map was revised November 1, 1957, July 17, 1961, May 12, 1975, and July 27, 1993.

July 26, 1991 Found 8 inch square granite monument down 0.6 feet in old bituminous road. Ramsey County Surveyor's Office

August 8, 1991 Placed sign and post near monument and retied. Ramsey County Surveyor's Office

April 3, 2001 Found granite monument down 0.7 feet. Retied monument. Ramsey County Surveyor's Office

Sept. 14, 2010 Found granite monument and retied. Ramsey County Surveyor's Office

October 15, 2015 Found granite monument, down 0.5 feet in gravel road. All ties destroyed. Set new ties in preparation for removal of monument during road construction. Ramsey County Surveyor's Office

November, 2015 Granite monument removed by construction crew. Physically recovered and saved by the Ramsey County Surveyor's Office.

May 4, 2016 Set a 20 inch "Ramsey County" cast iron monument flush with sub-grade of road using construction ties. Manhole assembly installed over cast iron monument by others. Tied cast iron monument. Ramsey County Surveyor's Office.