

MONUMENT 109

CERTIFICATE OF LOCATION OF GOVERNMENT CORNER

Northeast Corner of Section 15, Township 30 North, Range 23 West, County of Ramsey, State of Minnesota.

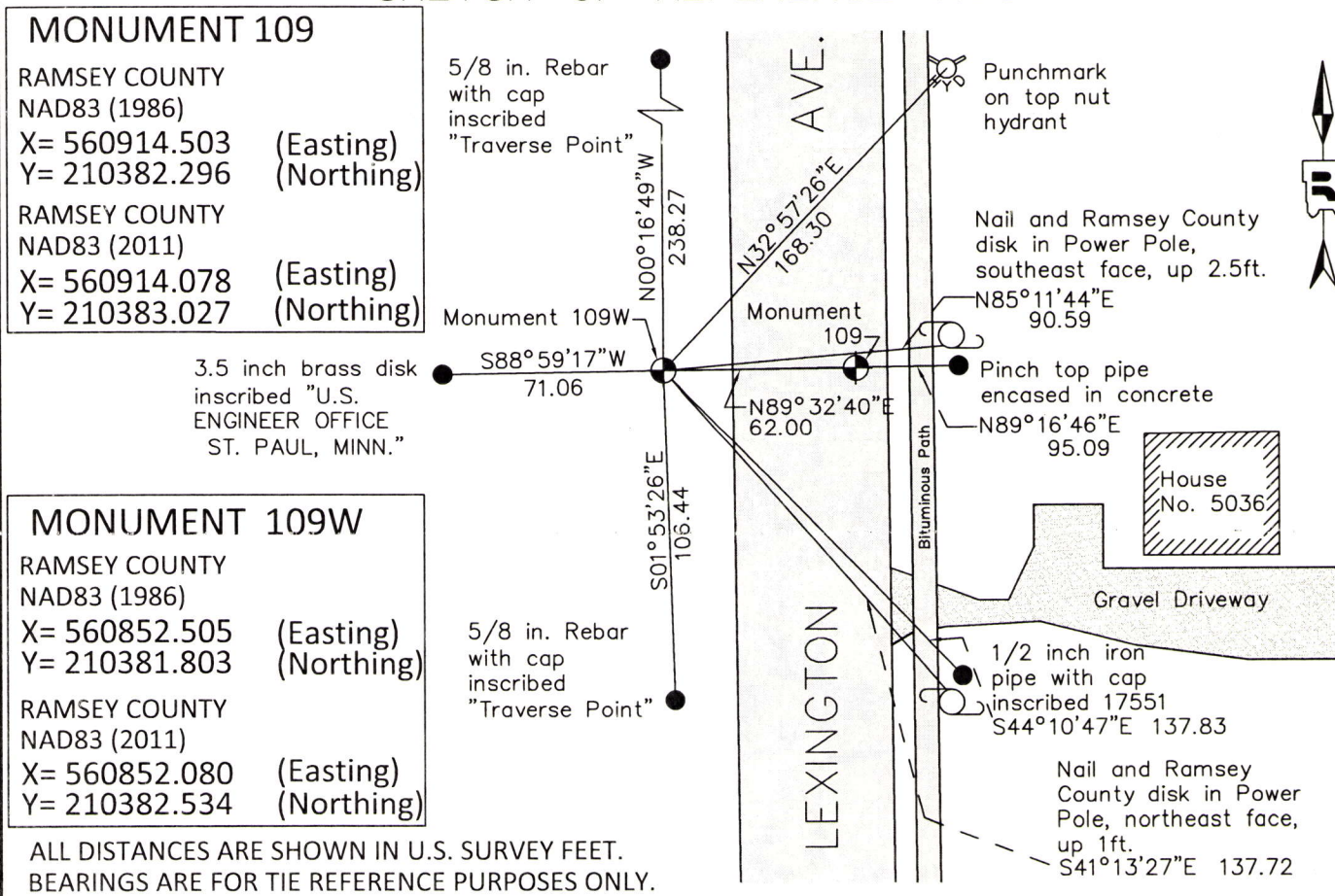
At the corner location shown on the sketch

On August 23, 2015 found a "Ramsey County" cast iron monument, within a cast iron manhole assembly.

left monument as found raised/lowered monument removed monument (explain)

On August 25, 2015 placed a cast iron "Ramsey County" Witness Monument 62.00 feet westerly of and on the section line due to heavy traffic at section corner location.

SKETCH OF REFERENCE TIES



MONUMENT 109
 RAMSEY COUNTY
 NAD83 (1986)
 X= 560914.503 (Easting)
 Y= 210382.296 (Northing)
 RAMSEY COUNTY
 NAD83 (2011)
 X= 560914.078 (Easting)
 Y= 210383.027 (Northing)

MONUMENT 109W
 RAMSEY COUNTY
 NAD83 (1986)
 X= 560852.505 (Easting)
 Y= 210381.803 (Northing)
 RAMSEY COUNTY
 NAD83 (2011)
 X= 560852.080 (Easting)
 Y= 210382.534 (Northing)

ALL DISTANCES ARE SHOWN IN U.S. SURVEY FEET.
 BEARINGS ARE FOR TIE REFERENCE PURPOSES ONLY.

Statements of evidence relative to this corner are on the following page.

I hereby certify that this survey, plan, or report was prepared by me or under my direct supervision, that I am a duly Licensed Land Surveyor under the laws of the state of Minnesota, and that this certificate is correct and complete to the best of my knowledge and belief.

Daniel D. Baar 3-17-16
 Daniel D. Baar Date
 Deputy County Surveyor
 Minnesota License No. 45816

OFFICE OF COUNTY SURVEYOR
 County of Ramsey

I hereby certify that this document was filed in the County Surveyor's office this 17th day of March, 20 16.

Craig W. Hinzman
 Craig W. Hinzman, L.S.
 Ramsey County Surveyor

MONUMENT 109

Northeast Corner of Section 15, Township 30 North, Range 23 West

December 16, 1847	Set Post Corner to Sections 10, 11, 14, and 15; White Oak 14 S81W 1.46, White Oak 11 N16E 1.65. Isaac Higbee Deputy Surveyor
February 3, 1897	In establishing the North East Corner of Section 15, found one Government witness tree and one stump. Fixed Corner and tied it. Ramsey County Resurvey
May 28, 1897	Set monument. Ramsey County Resurvey
November, 1943	Checked monument. Ramsey County Engineering Office
February, 1954	Checked monument. Ramsey County Engineering Office
March, 1968	Checked monument. Ramsey County Engineering Office
July 16, 1975	Found a granite monument, down 0.29 ft.; set a bolt and cast iron cap monument. Ramsey County Surveyor's Office
July 28, 1975	Retied monument. Ramsey County Surveyor's Office
April 30, 1990	Tied monument and removed cap monument for construction; granite monument destroyed. Ramsey County Surveyor's Office
August 21, 1991	Set a 20 in. cast iron monument. Ramsey County Surveyor's Office
August 29, 1991	Tied and cemented around monument. Ramsey County Surveyor's Office
April 30, 2002	Removed and lowered cast iron monument; set a 12 in. tube around monument for Maintenance Department. Ramsey County Surveyor's Office
May 14, 2002	Set a cast iron manhole assembly over monument. Ramsey County Surveyor's Office
November 22, 2002	Retied monument. Ramsey County Surveyor's Office
July 10, 2007	Retied monument. Ramsey County Surveyor's Office
July 22, 2015	Checked ties. Did not open manhole due to monument being in high traffic. Observed the manhole lid; looked to be in good condition. Ramsey County Surveyor's Office
August 23, 2015	Checked monument; monument in good condition. Performed a 50 minute static GPS observation. Ramsey County Surveyor's Office
August 25, 2015	Set a cast iron Witness Monument (Monument 109W) 62.00 feet west of the Northeast Corner (Monument 109) on the Section line. The Witness Monument was set using static GPS observations measured on the North Quarter Corner of Section 15 (Monument 108), the Northeast Corner (Monument 109), a control point to the north and a control point to the south. Angles and distances were measured with a total station to tie the static GPS observations on the control points and the Northeast Corner (Monument 109) together. A least squares adjustment software program was used to derive coordinate positions for the control points and the witness corner location. The Witness Monument was set because the Northeast Corner (Monument 109) is impractical to observe because it is in the center of a high traffic driving lane. Due to its impractical location, this monument will no longer be maintained. Tied the new Witness Monument and placed sign and post 1 ft. west. Ramsey County Surveyor's Office