

# MONUMENT 81

## CERTIFICATE OF LOCATION OF PERPETUATED MONUMENT

Center of Section 9, Township 30 North, Range 23 West, County of Ramsey, State of Minnesota.

At the corner location shown on the sketch

On June 17, 2014 found a cast iron monument, flush.

left monument as found       raised/lowered monument       removed monument (explain)

On \_\_\_\_\_ placed a \_\_\_\_\_

### SKETCH OF REFERENCE TIES

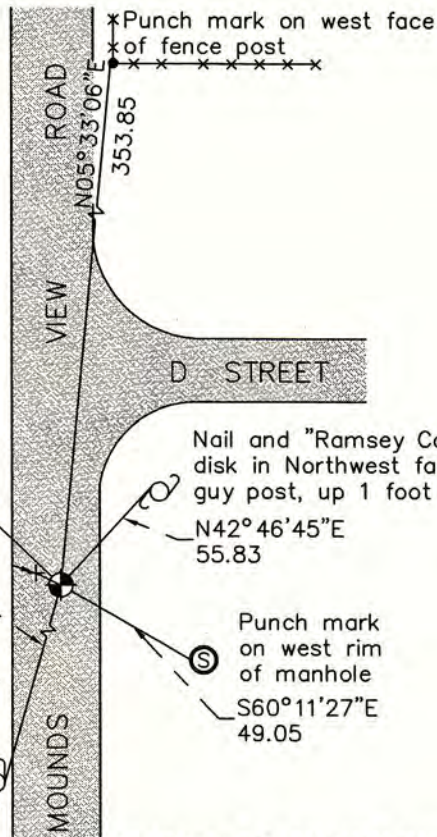


**NOTE:**  
MNDOT RIGHT OF WAY PLATS 62-44 and 62-45 use the intersection of quarter lines (computed position), other surveys use the monumented center.

Nail and "Ramsey County" disk in Northeast face of power pole, up 2 feet  
N46°54'59"W  
52.44

Computed center of section position at intersection of quarter lines  
N51°12'41"W  
1.39

S16°03'39"W  
132.76  
Nail and "Ramsey County" disk in East face of power pole, up 4 ft.



### MONUMENT 81

RAMSEY COUNTY  
NAD83 (1986)

X= 552961.551 (Easting)  
Y= 212979.786 (Northing)

NAD83 (1996)

X= 552961.164 (Easting)  
Y= 212980.422 (Northing)

NAD83 (2011)

X= 552961.206 (Easting)  
Y= 212980.441 (Northing)

ALL DISTANCES ARE SHOWN IN U.S. SURVEY FEET.  
BEARINGS ARE FOR TIE REFERENCE PURPOSES ONLY.

Statements of evidence relative to this corner are on the following page.

I hereby certify that this survey, plan, or report was prepared by me or under my direct supervision, that I am a duly Licensed Land Surveyor under the laws of the state of Minnesota, and that this certificate is correct and complete to the best of my knowledge and belief.

Daniel D. Baar      6-3-15  
Date  
Deputy County Surveyor  
Minnesota License No. 45816

OFFICE OF COUNTY SURVEYOR  
County of Ramsey

I hereby certify that this document was filed in the County Surveyor's office this 3<sup>rd</sup> day of June, 20 15.

Craig W. Hinzman  
Date  
Craig W. Hinzman, L.S.  
Ramsey County Surveyor  
*Deputy Ramsey County Surveyor*

# MONUMENT 81

Center of Section 9, Township 30 North, Range 23 West

- May 4, 1901                      Established the Center of Section 9 by intersection and set monument, Ramsey County Re-monumentation Survey.
- July 16, 1942                    The United States of America acquired 2,425 acres, more or less, for an ammunition plant per document number A04501182. The Center of Section 9 is located within the acquisition area.
- August 22, 1991                Found solid rod 3/4" x 24" flush & 3/4" I.D. pipe 18" long down 11" inches with 3/4" rod inside. Dug 4 ft. and found nothing more. Soil is fine sand and is not real stable. Placed 24" cast iron monu. flush & tied. [sic] Ramsey County Surveyor's Office
- April 3, 2001                    Retied monument. Ramsey County Surveyor's Office
- March 9, 2005                   Retied monument. Ramsey County Surveyor's Office
- September 15, 2010           Retied monument. Ramsey County Surveyor's Office
- April 16, 2013                 Performed a 50 minute static GPS observation and post-processed data using OPUS to establish NAD83 (2011 Adjusted) coordinates on monument. Ramsey County Surveyor's Office
- June 17, 2014                 Checked monument and tie conditions. Established NAD83 (1996 Adjusted) coordinates on the cast iron monument. Work was performed as part of County Surveyor's Office survey project in Sections 9 and 16 in support of the redevelopment of former TCAAP property. Coordinates established utilizing historic traverse data, complimenting current traverse data and GPS measurements, all analyzed and adjusted by least squares. Ramsey County Surveyor's Office.