

# MONUMENT 68

## CERTIFICATE OF LOCATION OF GOVERNMENT CORNER

North Quarter Corner of Section 9, Township 30 North, Range 22 West, County of Ramsey, State of Minnesota.

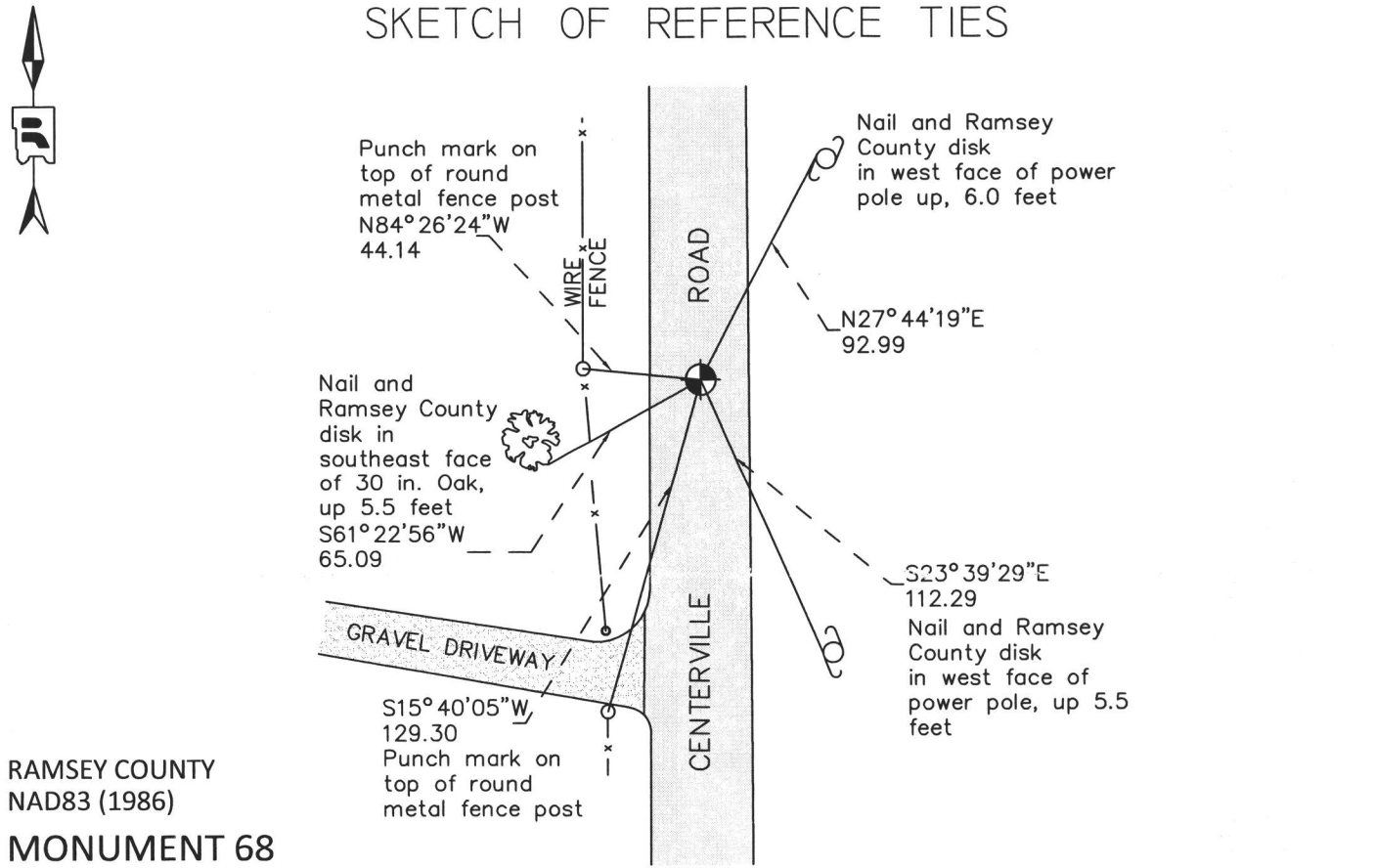
At the corner location shown on the sketch

On May 21, 2014 found a cast iron monument in bituminous road, tied for removal during road reconstruction.

left monument as found     
  raised/lowered monument     
  removed monument (explain)

On July 9, 2014 placed a new 20 in. " Ramsey County" cast iron monument within a cast iron manhole assembly using construction ties, tied monument.

### SKETCH OF REFERENCE TIES



RAMSEY COUNTY  
NAD83 (1986)

### MONUMENT 68

X= 584427.762 (Easting)  
Y= 215778.855 (Northing)

ALL DISTANCES ARE SHOWN IN U.S. SURVEY FEET.  
BEARINGS ARE FOR TIE REFERENCE PURPOSES ONLY.

Statements of evidence relative to this corner are on the following page.

I hereby certify that this survey, plan, or report was prepared by me or under my direct supervision, that I am a duly Licensed Land Surveyor under the laws of the state of Minnesota and that this certificate is correct and complete to the best of the my knowledge and belief.

*Daniel D. Baar*

6-5-15

Daniel D. Baar  
Minnesota License No. 45816

Date

County Surveyor  
 Deputy County Surveyor     
  Land Surveyor

OFFICE OF COUNTY SURVEYOR  
County of Ramsey

I hereby certify that this document was filed in the County Surveyor's office this 5<sup>th</sup> day of June, 20 15.

*Craig W. Hinzman*

Craig W. Hinzman, L.S.  
Ramsey County Surveyor

# MONUMENT 68

North Quarter Corner of Section 9, Township 30, Range 22

- December 7, 1847 Set 1/4 Section post, Bur Oak 8, N15°W 35, B Oak 10 N33°E 72, Isaac N. Higbee, Deputy Surveyor.
- January 26, 1910 The 1/4 Corner between Sections 4 and 9 was fixed by measuring west from the northeast corner of Section 9. Found old stake at 1/4 Corner. No Government trees standing; retied stake. (Ramsey County Resurvey)
- May 17, 1974 Found 1 1/4 in. bolt with nut, 2 ft. long and down 0.3 ft. Found 8 in. railroad spike down 1.0 ft. Found possible granite monument tipped at a 45 degree angle, down 1.5 ft.; did not try to upright. Placed a cast iron monument in the same place as 1 1/4 in. bolt, flush with pavement. (Ramsey County Surveyor's Office)
- July 3, 1974 Tied monument. (Ramsey County Surveyor's Office)
- 1989 Monument removed for construction department. (Ramsey County Surveyor's Office)
- November 24, 1992 Reset a 20 in. cast iron monument, flush, November 24, 1992. (Ramsey County Surveyor's Office)
- January 25, 1993 Retied monument. (Ramsey County Surveyor's Office)
- November 15, 1999 Retied monument. (Ramsey County Surveyor's Office)
- July 12, 2004 Retied monument. (Ramsey County Surveyor's Office)
- July 27, 2009 Retied monument. (Ramsey County Surveyor's Office)
- May 21, 2014 Tied monument for removal during road reconstruction, also checked local ties. (Ramsey County Surveyor's Office)
- July 9, 2014 Set a new 20 inch "Ramsey County" cast iron monument within a cast iron manhole assembly using construction offsets; tied. (Ramsey County Surveyor's Office)