

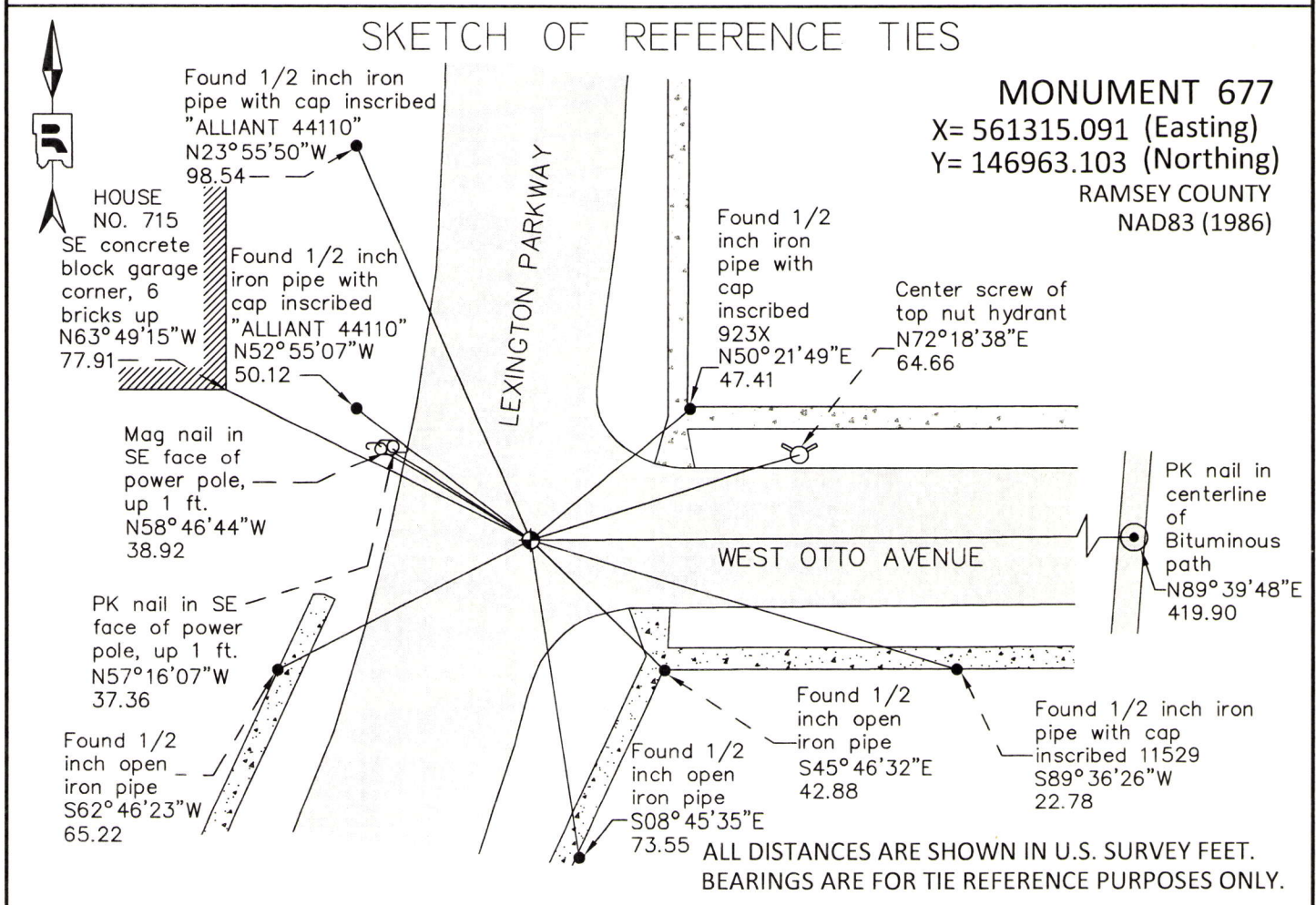
MONUMENT 677

CERTIFICATE OF LOCATION OF FOUND MONUMENT

Northeast corner of Section 15, Township 28 North, Range 23 West, County of Ramsey, State of Minnesota.

At the corner location shown on the sketch

- On September 15, 2014 found Mag nail flush in bituminous roadway; tied monument for removal during future milling of the road.
- left monument as found
 raised/lowered monument
 removed monument (explain)
- On September 17, 2014 placed a 16 inch "Ramsey County" cast iron monument, flush in new bituminous road.



Statements of evidence relative to this corner are on the following page.

I hereby certify that this document was prepared by me or under my direct supervision and that I am a duly Licensed Land Surveyor under the laws of the State of Minnesota.

Daniel D. Baar 9-9-15
Daniel D. Baar Date
Minnesota License No. 45816

- County Surveyor Land Surveyor
 Deputy County Surveyor

OFFICE OF COUNTY SURVEYOR
County of Ramsey

I hereby certify that this document was filed in the County Surveyor's office this 9th day of September, 20 15.

Craig W. Hinzman
Craig W. Hinzman, L.S.
Ramsey County Surveyor

MONUMENT 677

Northeast Corner of Section 15, Township 28, Range 23

- | | |
|--------------------|--|
| October 30, 1847 | Set post corner, Bur Oak 18, N49°W 3.68, Bur Oak 14, S89°W 3.66, Isaac N. Higbee, Deputy Surveyor. |
| February, 1888 | Survey of Section 14 by John B. Irvine, St. Paul Surveyor's Office. |
| August 22, 1889 | Monument checked after road construction; monument was not disturbed by grading, St. Paul Surveyor's Office. |
| April 2, 1925 | E.P. Symonds set monument, St. Paul Surveyor's Office. |
| April 16, 1926 | L.E. Holder re-set monument, St. Paul Surveyor's Office. |
| April 17, 1991 | Placed 4 ties on Cast iron monument, St. Paul Surveyor's Office. |
| August 1, 1991 | Set Cast iron monument, placed ties on CIM, St. Paul Surveyor's Office. |
| August 8, 1991 | Certificate of Location of Government Corner signed by William J. Cutting, St. Paul Surveyor's Office. |
| September 15, 2014 | Found Mag nail flush in bituminous roadway. Verified (by checking existing reference ties) that mag nail was in the same position as a cast iron monument that existed in 2013. Tied Mag nail for removal during future milling of the roadway, Ramsey County Surveyor's Office. |
| September 17, 2014 | Set a 16 inch cast iron monument marked "RAMSEY COUNTY" flush in bituminous roadway at the position of the previously tied Mag nail using construction ties. Tied new cast iron monument, Ramsey County Surveyor's Office. |