

MONUMENT 47E

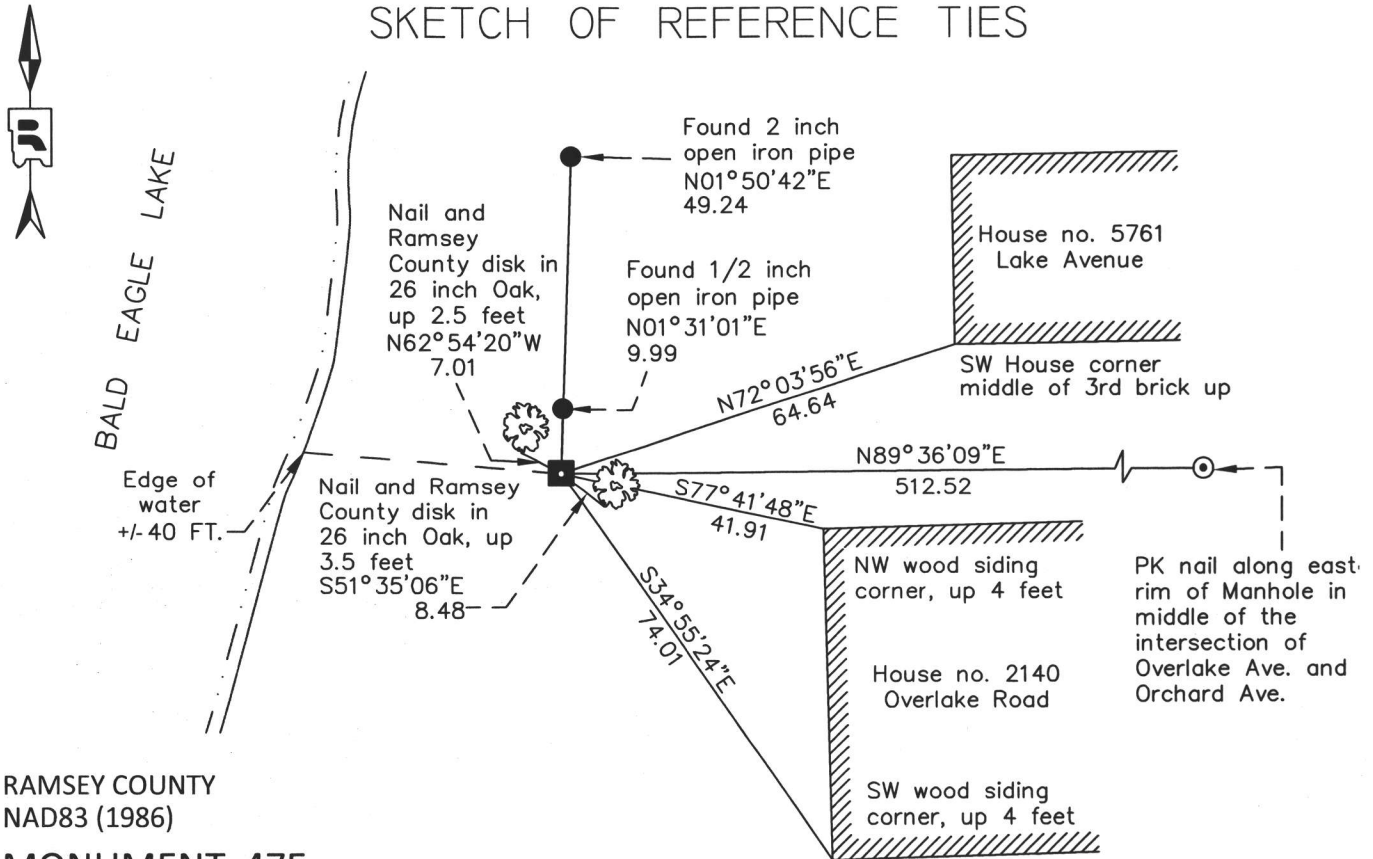
CERTIFICATE OF LOCATION OF SECTION SUBDIVISION MONUMENT

Witness monument on the East and West Quarter line of Section 2 , Township 30 North, Range 22 West, County of Ramsey, State of Minnesota.

At the corner location shown on the sketch

- On July 24, 2014 found Granite Monument that had been removed and placed by the shore of Bald Eagle Lake
- left monument as found
 raised/lowered monument
 removed monument (explain)
- On August 28, 2014 placed the same Granite Monument using local ties, down 0.15 feet in grass yard.

SKETCH OF REFERENCE TIES



RAMSEY COUNTY
NAD83 (1986)

MONUMENT 47E

X= 596331.803 (Easting)
Y= 218563.285 (Northing)

ALL DISTANCES ARE SHOWN IN U.S. SURVEY FEET.
BEARINGS ARE FOR TIE REFERENCE PURPOSES ONLY.

Statements of evidence relative to this corner are on the following page.

I hereby certify that this document was prepared by me or under my direct supervision and that I am a duly Licensed Land Surveyor under the laws of the State of Minnesota.

Daniel D. Baar 8-19-15
Date
Minnesota License No. 45816

- County Surveyor
 Deputy County Surveyor Land Surveyor

OFFICE OF COUNTY SURVEYOR
County of Ramsey

I hereby certify that this document was filed in the County Surveyor's office this 19th day of August, 20 15.

Craig W. Hinzman
Craig W. Hinzman, L.S.
Ramsey County Surveyor

MONUMENT 47E

Witness monument on the East and West Quarter line of Section 2 , Township 30 North, Range 22 West

- | | |
|-------------------|--|
| 1901 +/- | Ramsey County Resurvey map shows a monument set at this location. |
| May 24, 1974 | Found granite monument up 1.2 ft.; lowered granite monument to 0.4 ft. above ground; retied, Ramsey County Surveyor's Office. |
| December 18, 1992 | Found granite monument up +/-0.3 ft., retied, Ramsey County Surveyor's Office. |
| October 22, 1999 | Retied monument, Ramsey County Surveyor's Office. |
| November 1, 2004 | Retied monument, Ramsey County Surveyor's Office. |
| November 4, 2009 | Retied monument, Ramsey County Surveyor's Office. |
| July 24, 2014 | Visited monument location to check the condition of the monument and ties. Unable to locate granite monument. Checked the ties and all ties were present and in good condition. Investigated the shoreline of Bald Eagle Lake and found an 8 inch by 8 inch by 24 inch cut granite monument with drill hole lying on its side near the water. Took granite monument back to Ramsey County Public Works, Ramsey County Surveyor's Office. |
| August 20, 2014 | County Surveyor spoke with homeowner. Homeowner stated that the monument was removed in 2012 as part of a shoreline restoration project. Homeowner also stated that the monument was a tripping hazard due to it being up 0.3 feet. Homeowner had contacted the Watershed District to ask about the monument and the Watershed District gave them permission to remove the monument and replace it with some sort of metal marker. |
| August 28, 2014 | Established position of monument using local ties that were measured on November 4, 2009. Set the same physical granite monument that was recovered on July 24, 2014. Retied monument, Ramsey County Surveyor's Office. |