

# MONUMENT 449

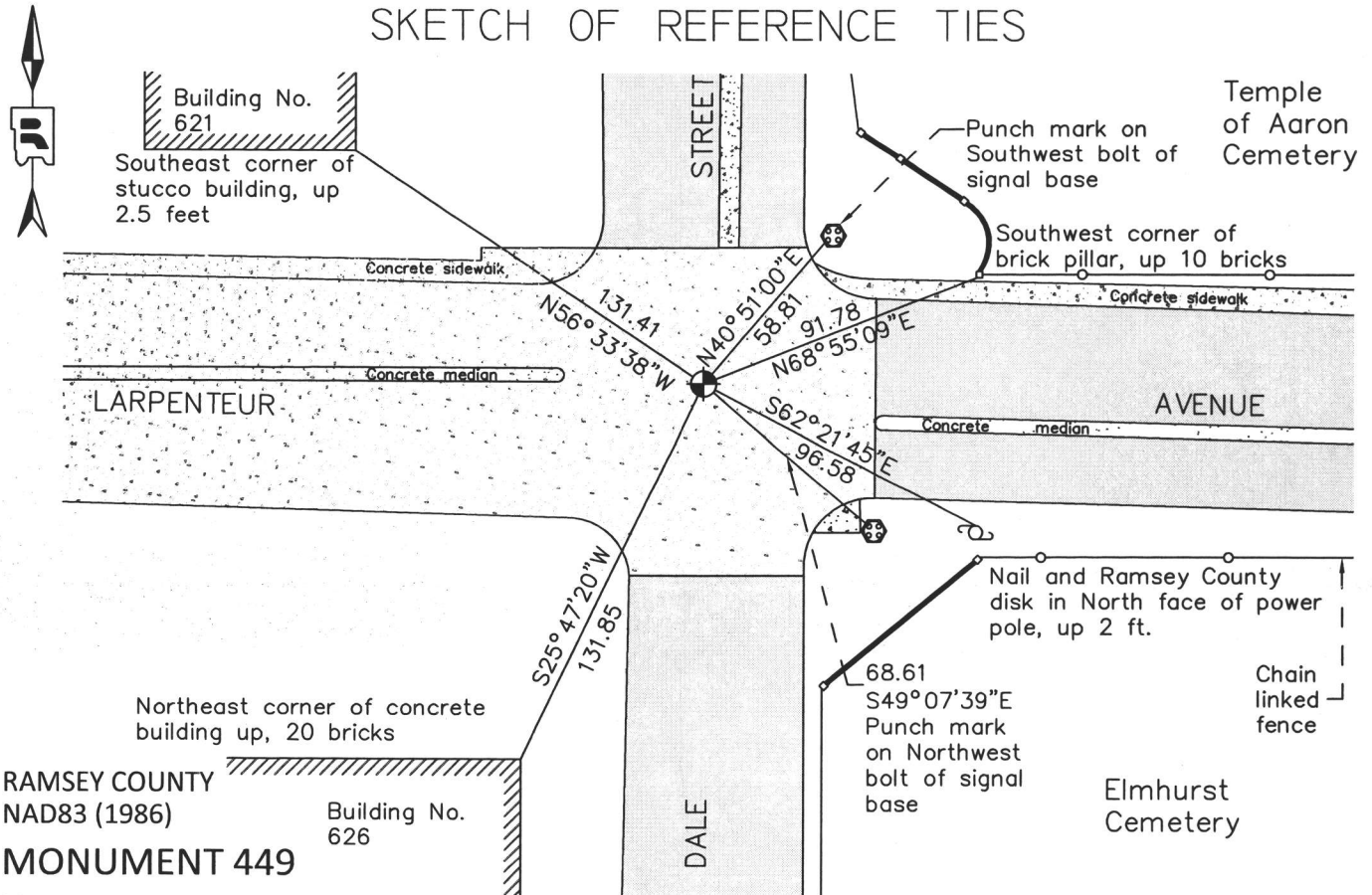
## CERTIFICATE OF LOCATION OF GOVERNMENT CORNER

Northeast Corner of Section 23, Township 29 North, Range 23 West, County of Ramsey, State of Minnesota.

At the corner location shown on the sketch

- On April 29, 2014 found a cast iron monument flush in bituminous road, tied for removal during road construction.
- left monument as found     
  raised/lowered monument     
  removed monument (explain)
- On June 6, 2014 placed a new "Ramsey County" 20 inch cast iron monument within a cast iron manhole assembly.

### SKETCH OF REFERENCE TIES



**RAMSEY COUNTY**  
 NAD83 (1986)  
**MONUMENT 449**

X= 566554.259 (Easting)  
 Y= 173277.366 (Northing)

ALL DISTANCES ARE SHOWN IN U.S. SURVEY FEET.  
 BEARINGS ARE FOR TIE REFERENCE PURPOSES ONLY.

Statements of evidence relative to this corner are on the following page.

I hereby certify that this survey, plan, or report was prepared by me or under my direct supervision, that I am a duly Licensed Land Surveyor under the laws of the state of Minnesota and that this certificate is correct and complete to the best of the my knowledge and belief.

Daniel D. Baar      6-5-15  
 Daniel D. Baar      Date

Minnesota License No. 45816

- County Surveyor       Land Surveyor  
 Deputy County Surveyor

OFFICE OF COUNTY SURVEYOR  
 County of Ramsey

I hereby certify that this document was filed in the County Surveyor's office this 5<sup>th</sup> day of June, 20 15.

Craig W. Hinzman  
 Craig W. Hinzman, L.S.  
 Ramsey County Surveyor

# MONUMENT 449

Northeast Corner of Section 23, Township 29 North, Range 23 West

November 3, 1847	Set post Corner to Sections 13, 14, 23, & 24, Bur Oak 10 S51°W 51, B. Oak 16 S63°E 59, Isaac Higbee, Deputy Surveyor.
April 2, 1890	Monument set by J. H. Armstrong. (City of Saint Paul Surveyor's Office)
January 30, 1934	Tied granite monument at grade. (City of Saint Paul Surveyor's Office)
December, 1939	Tied monument. (City of Saint Paul Surveyor's Office)
May 8, 1972	Removed brass plug and set cast iron monument in concrete. (City of Saint Paul Surveyor's Office)
September, 1973	Brass plug set to grade in concrete. (City of Saint Paul Surveyor's Office)
March, 1976	Found a brass plug. See pages 1-3 of Survey Book No. 3, which is filed in the Ramsey County Surveyor's Office, to prove brass plug is not correct. (Ramsey County Surveyor's Office)
June 17, 1977	Set a cast iron cap monument in correct location. (Ramsey County Surveyor's Office)
1980	Monument destroyed by St. Paul Water Department. (Ramsey County Surveyor's Office)
July, 1981	Placed a 20 in. cast iron monument, See page 43 of Survey Book No. 3, which is filed in the Ramsey County Surveyor's Office. (Ramsey County Surveyor's Office)
July 20, 1981	Checked monument. (Ramsey County Surveyor's Office)
December, 1982	Tied Ramsey County cast iron monument. (City of Saint Paul Surveyor's Office)
March, 1984	Set cast iron monument. (City of Saint Paul Surveyor's Office)
August 30, 1990	Tied monument. (Ramsey County Surveyor's Office)
March 9, 2001	Found cast iron monument at grade; tied. (City of Saint Paul Surveyor's Office)
July 12, 2002	Retied monument. (Ramsey County Surveyor's Office)
August 9, 2007	Retied monument. (Ramsey County Surveyor's Office)
December 13, 2009	Tied cast iron monument. (City of Saint Paul Surveyor's Office)
August 21, 2012	Found Ramsey County cast iron monument, flush in bituminous road; checked condition of ties. (Ramsey County Surveyor's Office)
April 29, 2014	Tied cast iron monument for removal during road reconstruction. (Ramsey County Surveyor's Office)
June 6, 2014	Cast iron monument removed by others during construction between April 29 and June 6, 2014. Installed new 20 inch "Ramsey County" cast iron monument, flush with subgrade of concrete road, using construction offsets and local ties; tied monument. Cast iron manhole assembly set by others. (Ramsey County Surveyor's Office)