

MONUMENT 448

CERTIFICATE OF LOCATION OF FOUND MONUMENT

North Quarter Corner of Section 23, Township 29 North, Range 23 West, County of Ramsey, State of Minnesota.

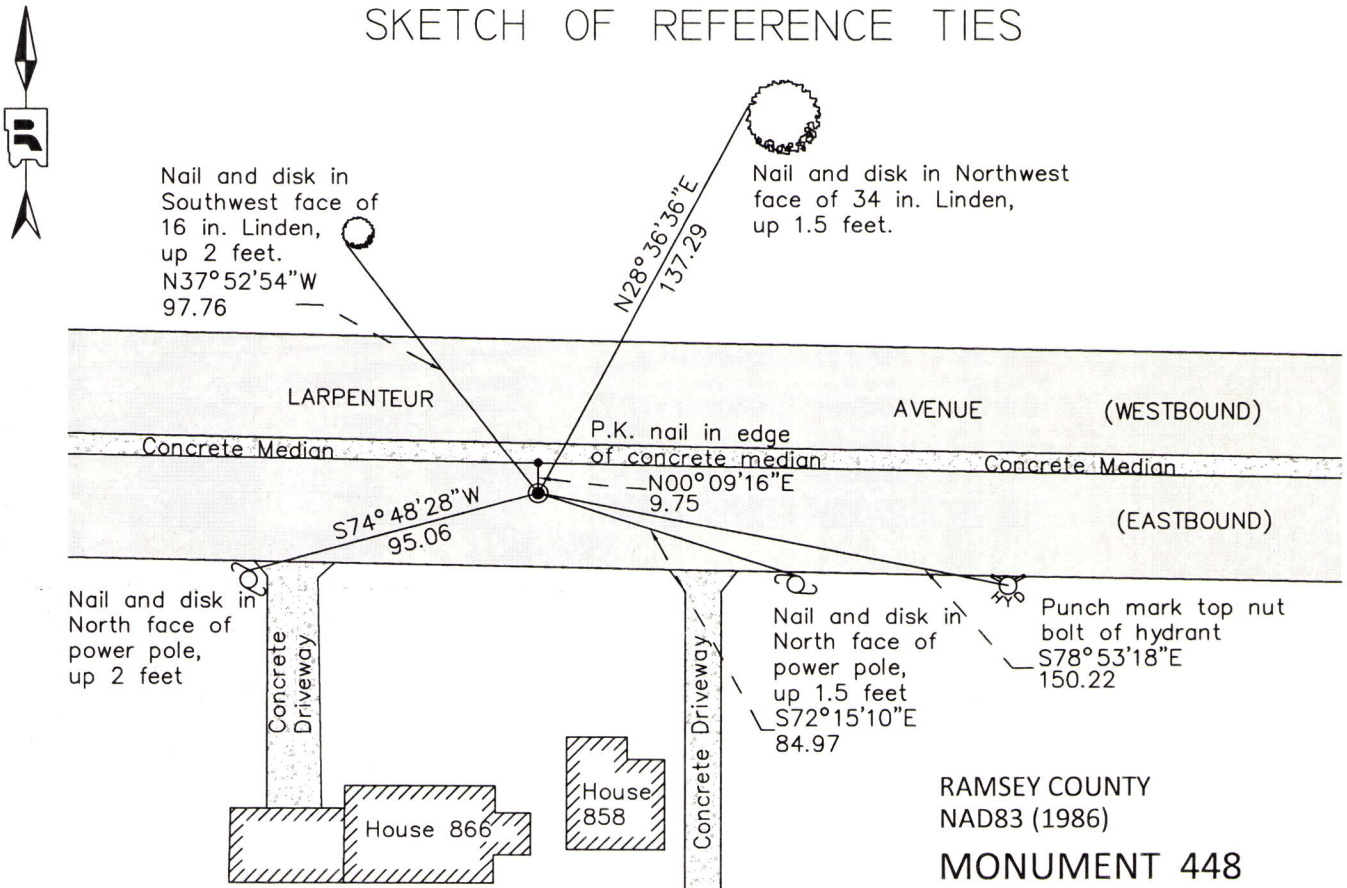
At the corner location shown on the sketch

On July 24, 2014 found a brass plug with damaged top, flush in grooved surface of concrete road.

left monument as found raised/lowered monument removed monument (explain)

On _____ placed a _____

SKETCH OF REFERENCE TIES



ALL DISTANCES ARE SHOWN IN U.S. SURVEY FEET.
BEARINGS ARE FOR TIE REFERENCE PURPOSES ONLY.

RAMSEY COUNTY
NAD83 (1986)
MONUMENT 448
X= 563926.605 (Easting)
Y= 173306.563 (Northing)

Statements of evidence relative to this corner are on the following page.

I hereby certify that this document was prepared by me or under my direct supervision and that I am a duly Licensed Land Surveyor under the laws of the State of Minnesota.

Daniel D. Baar 6-2-15
Daniel D. Baar Date
Minnesota License No. 45816

- County Surveyor Land Surveyor
 Deputy County Surveyor

OFFICE OF COUNTY SURVEYOR
County of Ramsey

I hereby certify that this document was filed in the County Surveyor's office this 2nd day of June, 20 15.

Craig W. Hinzman
Craig W. Hinzman, L.S.
Ramsey County Surveyor

MONUMENT 448

North Quarter Corner of Section 23, Township 29 North, Range 23 West

November 3, 1847	Set Quarter Section post. Bur Oak 12 N43°W 33; Bur Oak 15 S33°E 89. Isaac Higbee, Deputy Surveyor
August, 1887	Monument set by J.H. Armstrong. City of St. Paul Records
January 31, 1934	Placed ties on the Granite Monument at grade. City of St. Paul Surveyor's Office book MSX 4 Pg. 13
December, 1939	Placed ties. City of St. Paul Surveyor's Office FB 1357 Pg. 1
April 17, 1968	Ties for a brass monument were found from the Village of Roseville's Section tie book; Ties were then referenced on a Certificate of Location of Government Corner sheet. Minnesota Highway Department.
Unknown Date, 1976	Found a brass plug. Ramsey County Surveyor's Office
August 30, 1990	Retied monument. Ramsey County Surveyor's Office
October 12, 1998	Used brass plug for traverse control. City of St. Paul Surveyor's Office
March 20, 2001	Tied brass monument. Certificate of Location signed by Jeffrey Grosso. City of St. Paul Surveyor's Office
July 12, 2002	Retied monument. Ramsey County Surveyor's Office
September 5, 2007	Retied monument. Ramsey County Surveyor's Office
December 8, 2009	Retied monument. Certificate of Location signed by Samuel Gibson. City of St. Paul Surveyor's Office
April 29, 2014	Tied brass plug monument for removal prior to road construction. Ramsey County Surveyor's Office
July 24, 2014	Checked brass plug monument and ties after road reconstruction. Top milled off during road construction, left monument as found. Ramsey County Surveyor's Office