

MONUMENT 350

CERTIFICATE OF LOCATION OF GOVERNMENT CORNER

North Quarter Corner of Section 8, Township 29 North, Range 23 West, County of Ramsey, State of Minnesota.

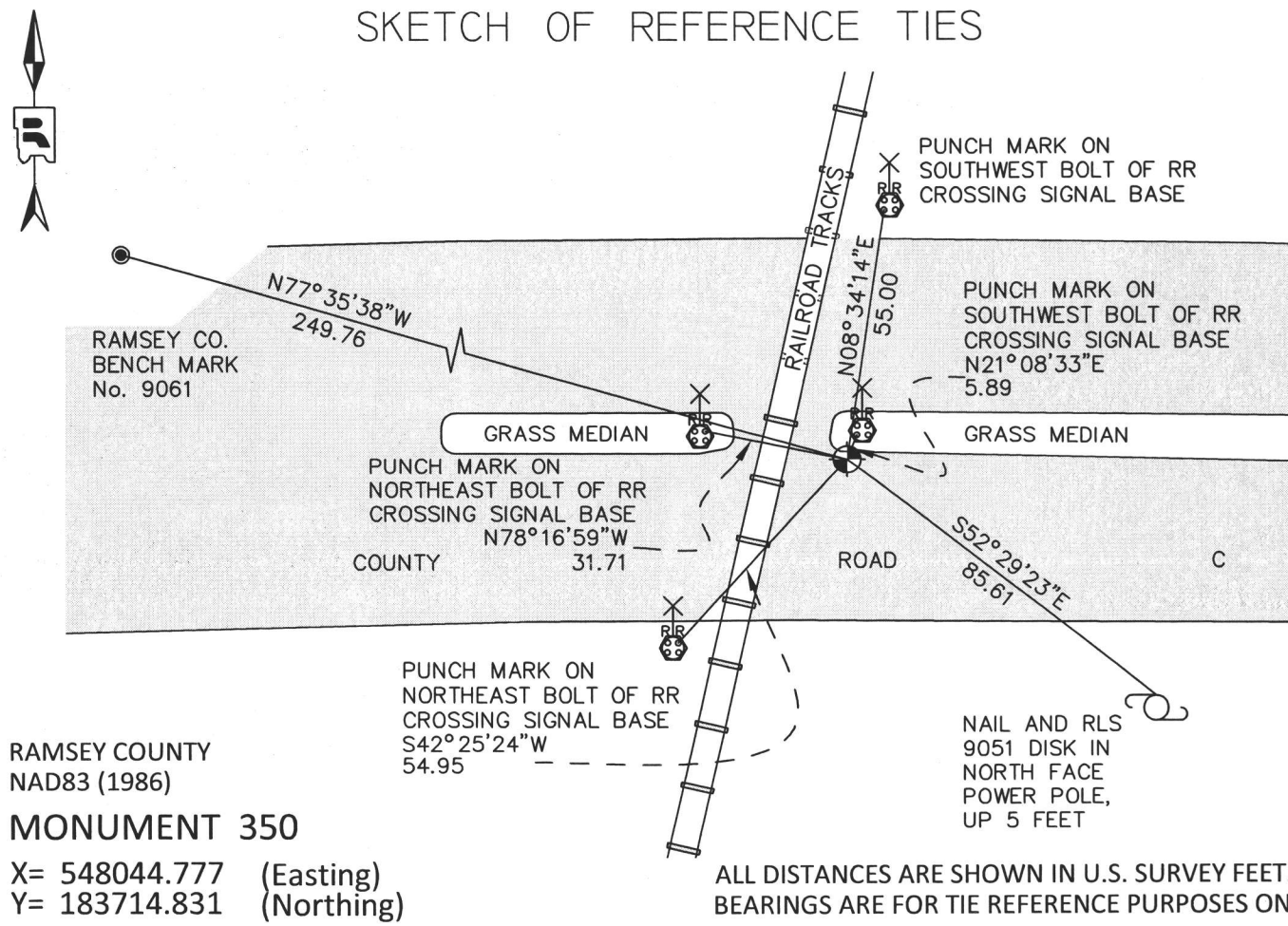
At the corner location shown on the sketch

On October 6, 2014 found a "Ramsey County" cast iron monument, flush in concrete curb.

left monument as found raised/lowered monument removed monument (explain)

On October 6, 2014 removed existing cast iron monument and set new "Ramsey County" cast iron monument in a cast iron manhole assembly.

SKETCH OF REFERENCE TIES



RAMSEY COUNTY
NAD83 (1986)
MONUMENT 350

X= 548044.777 (Easting)
Y= 183714.831 (Northing)

ALL DISTANCES ARE SHOWN IN U.S. SURVEY FEET.
BEARINGS ARE FOR TIE REFERENCE PURPOSES ONLY.

Statements of evidence relative to this corner are on the following page.

I hereby certify that this survey, plan, or report was prepared by me or under my direct supervision, that I am a duly Licensed Land Surveyor under the laws of the state of Minnesota and that this certificate is correct and complete to the best of the my knowledge and belief.

Daniel D. Baar 8-19-15
Daniel D. Baar Date

Minnesota License No. 45816
 County Surveyor
 Deputy County Surveyor Land Surveyor

OFFICE OF COUNTY SURVEYOR
County of Ramsey

I hereby certify that this document was filed in the County Surveyor's office this 19th day of August, 20 15.

Craig W. Hinzman
Craig W. Hinzman, L.S.
Ramsey County Surveyor

MONUMENT 350

North Quarter Corner of Section 8, Township 29 North, Range 23 West

November 1847	Set Quarter Section Post; Bur Oak 10 N51°E 91, Bur Oak 9 S35°E 105. Isaac N. Higbee, Deputy Surveyor
December 20, 1899	Found one Government tree; fixed corner and tied out. Ramsey County Resurvey
April 1900	Set Monument. Ramsey County Resurvey
August 15, 1975	Found nothing; re-established position from survey by Ray Wolfgram. Set cast iron monument. Ramsey County Surveyor's Office
Unknown date, 1979	Destroyed by construction. Ramsey County Surveyor's Office
Unknown date, 1981	Replaced cast iron monument and tied. Ramsey County Surveyor's Office
August 6, 2002	Retied monument. Ramsey County Surveyor's Office
July 1, 2009	Retied monument. Ramsey County Surveyor's Office
May 9, 2014	Tied monument for removal during road construction. Ramsey County Surveyor's Office
October 6, 2014	Found a "Ramsey County" cast iron monument, flush in curb. Removed existing 4 3/8 inch cast iron monument and replaced it with a 20 inch "Ramsey County" cast iron monument within a cast iron manhole. Ramsey County Surveyor's Office
October 15, 2014	Tied "Ramsey County" cast iron monument within a cast iron manhole assembly. Ramsey County Surveyor's Office