

# MONUMENT 86

## CERTIFICATE OF LOCATION OF GOVERNMENT CORNER

East Quarter Corner of Section 11, Township 30 North, Range 23 West, County of Ramsey, State of Minnesota.

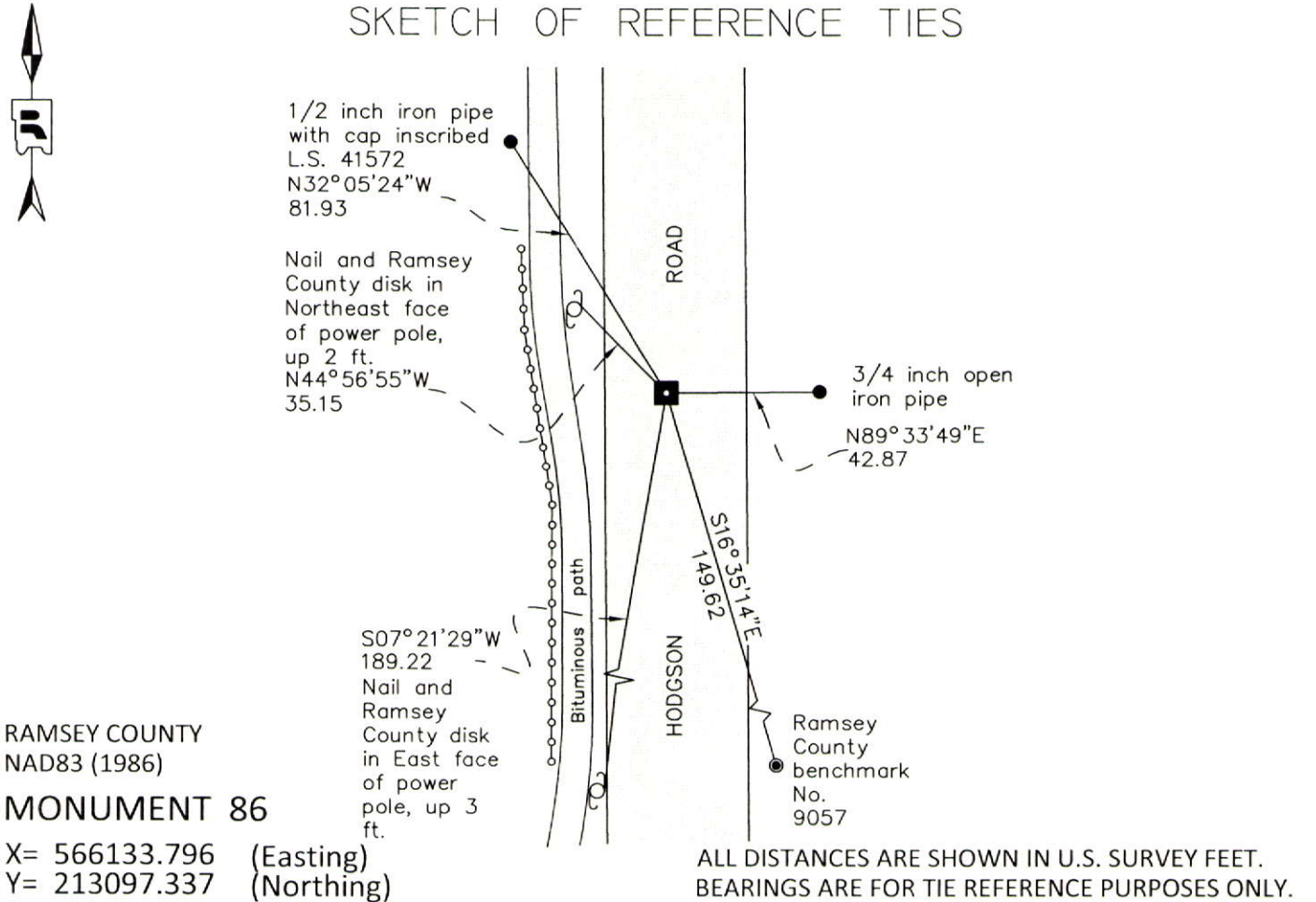
At the corner location shown on the sketch

On August 21, 2014 found a "Ramsey County" cast iron monument in bituminous road, down 0.4 ft.

left monument as found       raised/lowered monument       removed monument (explain)

On August 21, 2014 removed "Ramsey County" cast iron monument. Found a 7 inch by 8 inch granite monument, down 1 ft. Placed a cast iron manhole assembly over granite monument; tied out monument.

### SKETCH OF REFERENCE TIES



ALL DISTANCES ARE SHOWN IN U.S. SURVEY FEET.  
BEARINGS ARE FOR TIE REFERENCE PURPOSES ONLY.

Statements of evidence relative to this corner are on the following page.

I hereby certify that this document was prepared by me or under my direct supervision and that I am a duly Licensed Land Surveyor under the laws of the State of Minnesota.

Daniel D. Baar      12-16-14  
 Daniel D. Baar      Date  
 Minnesota License No. 45816

County Surveyor  
 Deputy County Surveyor       Land Surveyor

OFFICE OF COUNTY SURVEYOR  
 County of Ramsey

I hereby certify that this document was filed in the County Surveyor's office this 16th day of December, 20 14.

Craig W. Hinzman  
 Craig W. Hinzman, L.S.  
 Ramsey County Surveyor

# MONUMENT 86

East Quarter Corner of Section 11, Township 30 North, Range 23 West

December 16, 1847	Set 1/4 Section post, Bur Oak 10 S25°E 32, "DO" (Bur Oak) 12 N20°W 82, Isaac Higbee, Deputy Surveyor.
March 14, 1898	In establishing the 1/4 Corner between Sections 10 and 11, ran straight line from Corner to Corner and fixed 1/4 corner half way between. Government witness trees gone, Ramsey County Resurvey.
August 1, 1900	Set monument, Ramsey County Resurvey.
December, 1943	Checked monument, Ramsey County Engineer's Office.
February, 1954	Checked monument, Ramsey County Engineer's Office.
July 24, 1975	Found a granite monument down 0.61 feet; placed a short (4-5/8 inch) cast iron monument over granite monument, Ramsey County Surveyor's Office.
February 19, 1976	Tied monument, Ramsey County Surveyor's Office.
February 14, 1992	Retied monument, Ramsey County Surveyor's Office.
July 1, 2003	Retied monument, Ramsey County Surveyor's Office.
October 3, 2008	Retied monument, Ramsey County Surveyor's Office.
April 29, 2013	Check "Ramsey County" cast iron monument in bituminous road, down 0.4 feet, and condition of ties, Ramsey County Surveyor's Office.
May 14, 2014	Offset monument for removal during road construction, Ramsey County Surveyor's Office.
August 21, 2014	Removed short (4-5/8 inch) cast iron monument. Found a 7 inch by 8 inch granite monument, down 1 foot. Placed a cast iron manhole assembly over granite monument; retied monument, Ramsey County Surveyor's Office.