

MONUMENT 762N

CERTIFICATE OF LOCATION OF GOVERNMENT CORNER

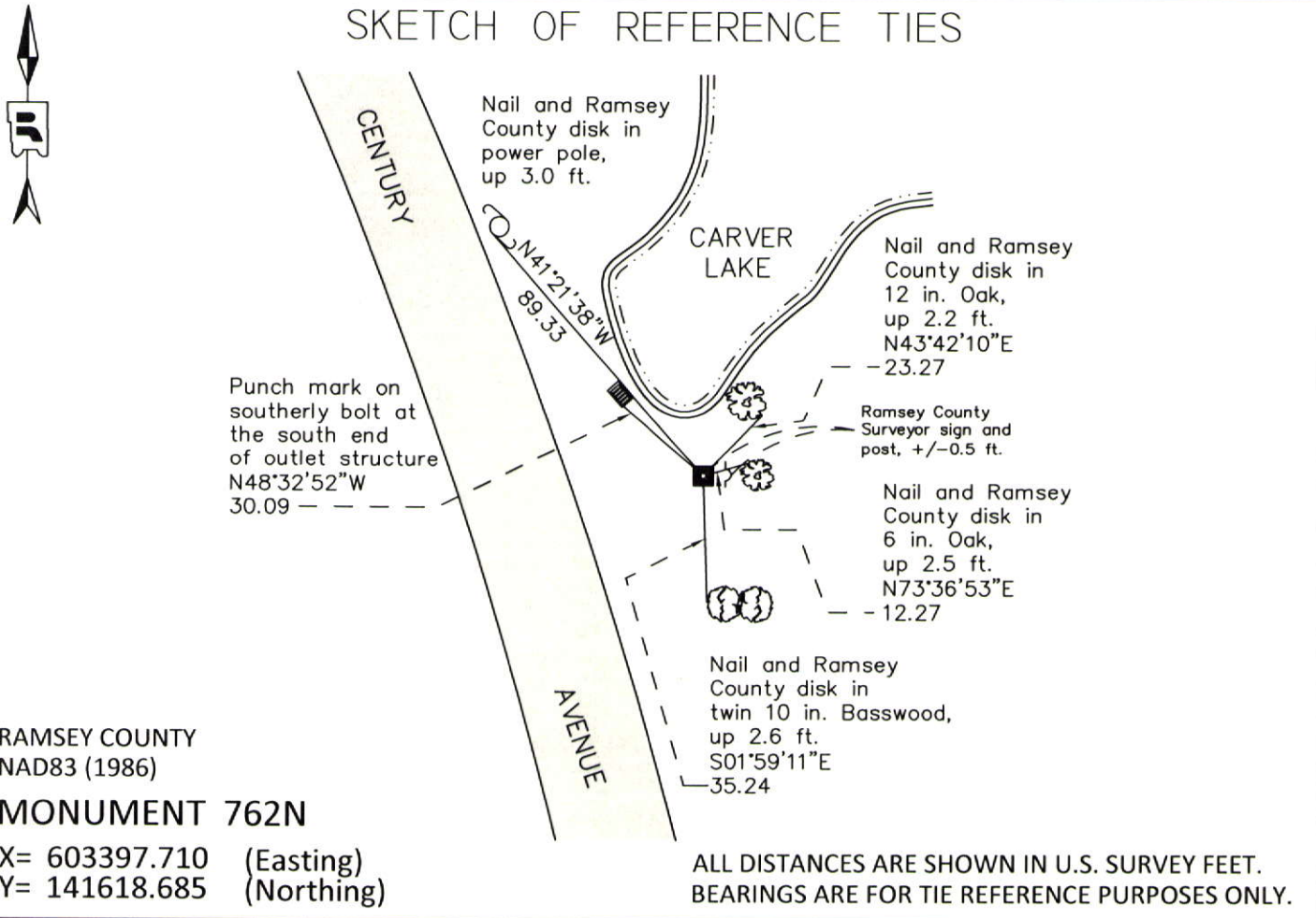
Meander Corner No. 14 on the East line of the Northeast Quarter of Section 24,
Township 28 North, Range 22 West, County of Ramsey, State of Minnesota.

At the corner location shown on the sketch

On May 31, 2011 found a granite monument, down 1.3 ft.

left monument as found raised/lowered monument removed monument (explain)

On _____ placed a _____



Statements of evidence relative to this corner are on the following page.

I hereby certify that this document was prepared by me or under my direct supervision and that I am a duly Licensed Land Surveyor under the laws of the State of Minnesota.

Daniel D. Baar 12-30-14
Daniel D. Baar Date
Minnesota License No. 45816

- County Surveyor
 Deputy County Surveyor Land Surveyor

OFFICE OF COUNTY SURVEYOR
County of Ramsey

I hereby certify that this document was filed in the County Surveyor's office this 30th day of December, 20 14.

Craig W. Hinzman
Craig W. Hinzman, L.S.
Ramsey County Surveyor

MONUMENT 762N

Meander Corner No. 14 on the East line of the Northeast Quarter
of Section 24, Township 28 North, Range 22 West

Set Meander post at arm of lake, Bur Oak 6 S14°E 26, September 30, 1847.

Meander Corner No. 47 was fixed August 20, 1897 (Ramsey County Re-survey).
Meander Corner No. "47" appears to be a perpetuation of Meander Corner No. 14.

Set monument, September 2, 1897.

Found a granite monument, down +/-6 in. and tied, February 18, 1976.

Retied granite monument, down +/-18 in.; set a sign and post +/-1 ft. east,
April 18, 2001.

Retied monument, September 12, 2006.

Retied granite monument down 1.3 ft., May 31, 2011.