

MONUMENT 691

CERTIFICATE OF LOCATION OF GOVERNMENT CORNER

Northeast Corner of Section 14, Township 28 North, Range 22 West, County of Ramsey, State of Minnesota.

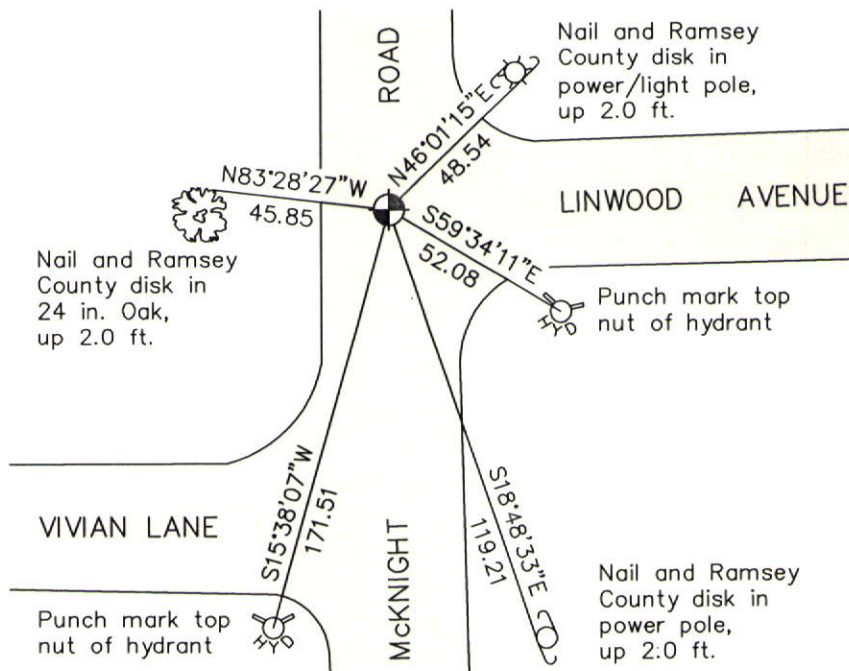
At the corner location shown on the sketch

On June 2, 2011 found a cast iron monument, down 0.15 ft.

left monument as found raised/lowered monument removed monument (explain)

On _____ placed a _____

SKETCH OF REFERENCE TIES



RAMSEY COUNTY
NAD83 (1986)

MONUMENT 691

X= 598057.094 (Easting)
Y= 147020.415 (Northing)

ALL DISTANCES ARE SHOWN IN U.S. SURVEY FEET.
BEARINGS ARE FOR TIE REFERENCE PURPOSES ONLY.

Statements of evidence relative to this corner are on the following page.

I hereby certify that this document was prepared by me or under my direct supervision and that I am a duly Licensed Land Surveyor under the laws of the State of Minnesota.

Daniel D. Baar 12-30-14
Daniel D. Baar Date
Minnesota License No. 45816

County Surveyor
 Deputy County Surveyor Land Surveyor

OFFICE OF COUNTY SURVEYOR
County of Ramsey

I hereby certify that this document was filed in the County Surveyor's office this 30th day of December, 20 14.

Craig W. Hinzman
Craig W. Hinzman, L.S.
Ramsey County Surveyor

MONUMENT 691

Northeast Corner of Section 14, Township 28 North, Range 22 West

Set post Corner to Sections 11, 12, 13, and 14, Bur Oak 18 S19°W 59, Bur Oak 24 N28°E 36, October, 1847.

Monument set by J.H. Armstrong, April, 1892 (City of St. Paul notes).

Plat of OAKVILLE HEIGHTS ADDITION shows a cast iron monument at this location, April 18, 1983.

Found a cast iron monument down +/-0.25 ft., November 15, 1990.

Tied monument, April 13, 2001.

Retied monument, August 4, 2006.

Retied cast iron monument, down +/-0.15 ft., June 2, 2011.