

MONUMENT 645N

CERTIFICATE OF LOCATION OF SECTION SUBDIVISION MONUMENT

South Sixteenth Corner between Sections 1 and 2, Township 28 North, Range 22 West, County of Ramsey, State of Minnesota.

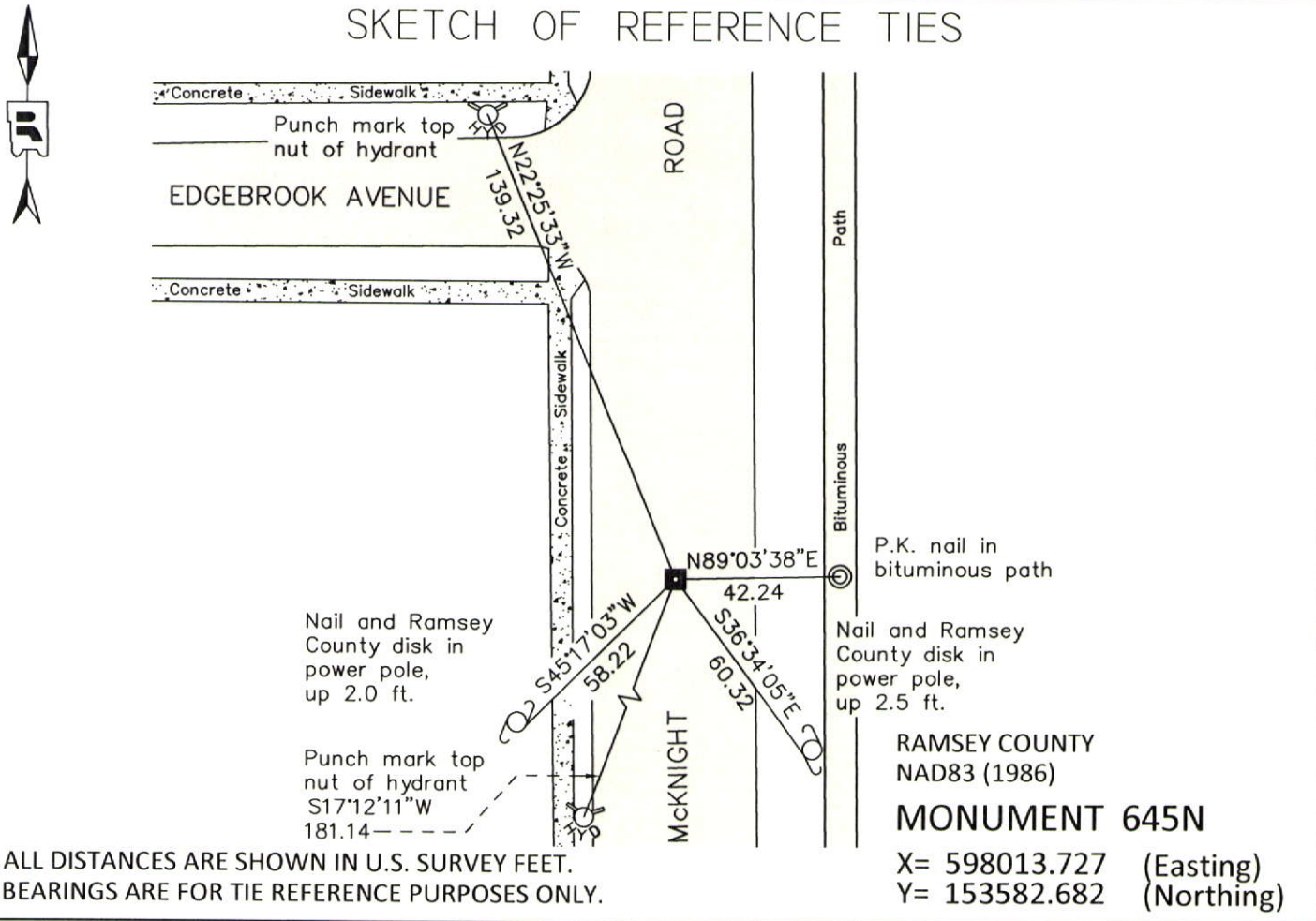
At the corner location shown on the sketch

On June 6, 2011 found a granite monument with drill hole, within a cast iron manhole assembly.

left monument as found
 raised/lowered monument
 removed monument (explain)

On _____ placed a _____

SKETCH OF REFERENCE TIES



Statements of evidence relative to this corner are on the following page.

I hereby certify that this document was prepared by me or under my direct supervision and that I am a duly Licensed Land Surveyor under the laws of the State of Minnesota.

Daniel D. Baar 12-30-14
 Daniel D. Baar Date
 Minnesota License No. 45816

- County Surveyor Land Surveyor
 Deputy County Surveyor

OFFICE OF COUNTY SURVEYOR
 County of Ramsey

I hereby certify that this document was filed in the County Surveyor's office this 30th day of December, 20 14.

Craig W. Hinzman
 Craig W. Hinzman, L.S.
 Ramsey County Surveyor

MONUMENT 645N

South Sixteenth Corner between Sections 1 and 2, Township 28 North, Range 22 West

Monument set by J.H. Armstrong, March, 1891 (City of Saint Paul notes).

Granite monument exposed by road milling project. Granite monument chipped, down +/-6 in., July 13, 1998.

Placed a 12 in. cast iron manhole assembly over granite monument and tied out, September 14, 1998.

Retied granite monument within a cast iron manhole assembly, November 15, 2002 (City of St. Paul notes).

Retied monument, July 21, 2006.

Retied a granite monument with drill hole, within a cast iron manhole assembly, June 6, 2011.