

# MONUMENT 58

## CERTIFICATE OF LOCATION OF GOVERNMENT CORNER

North Quarter Corner of Section 10, Township 30 North, Range 23 West, County of Ramsey, State of Minnesota.

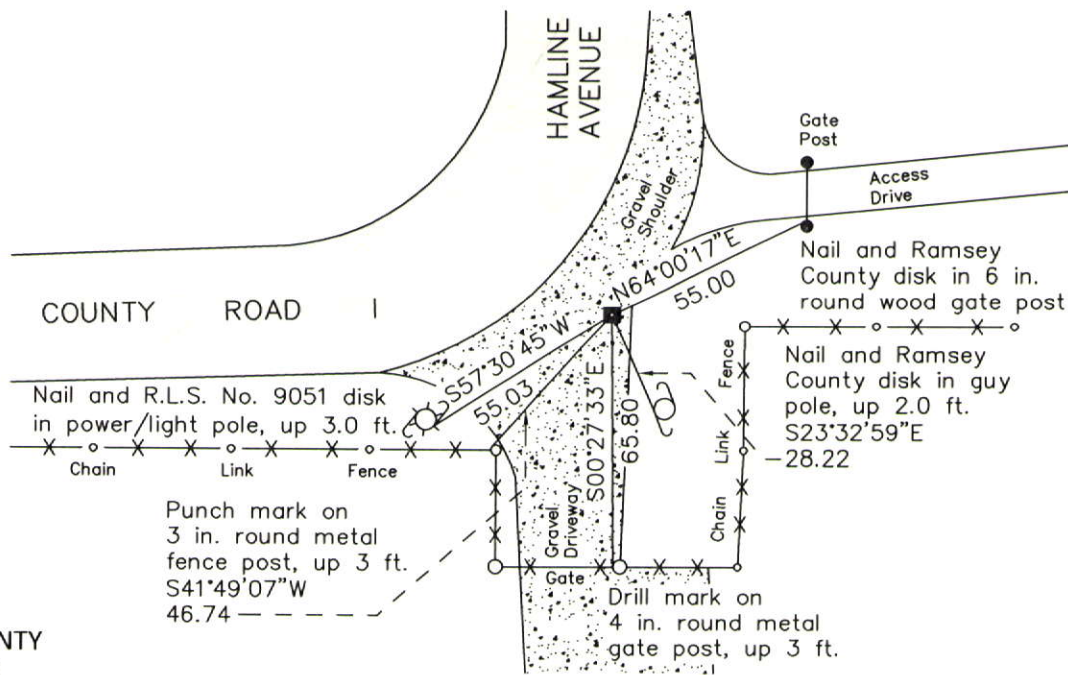
At the corner location shown on the sketch

On November 4, 2011 found a granite monument with drill hole and P.K. nail, up 0.25 ft.

left monument as found       raised/lowered monument       removed monument (explain)

On \_\_\_\_\_ placed a \_\_\_\_\_

### SKETCH OF REFERENCE TIES



RAMSEY COUNTY  
NAD83 (1986)

### MONUMENT 58

X= 558204.312 (Easting)  
Y= 215643.699 (Northing)

ALL DISTANCES ARE SHOWN IN U.S. SURVEY FEET.  
BEARINGS ARE FOR TIE REFERENCE PURPOSES ONLY.

Statements of evidence relative to this corner are on the following page.

I hereby certify that this document was prepared by me or under my direct supervision and that I am a duly Licensed Land Surveyor under the laws of the State of Minnesota.

Daniel D. Baar      12-30-14  
Daniel D. Baar      Date  
Minnesota License No. 45816

- County Surveyor       Land Surveyor  
 Deputy County Surveyor

OFFICE OF COUNTY SURVEYOR  
County of Ramsey

I hereby certify that this document was filed in the County Surveyor's office this 30th day of December, 20 14.

Craig W. Hinzman  
Craig W. Hinzman, L.S.  
Ramsey County Surveyor

# MONUMENT 58

North Quarter Corner of Section 10, Township 30 North, Range 23 West

Set 1/4 Section post, Bur Oak 12 S72°W 3.75, December 10, 1847.

In establishing the 1/4 Corner between Sections 3 and 10, ran straight line and fixed 1/4 corner 1/2 way, no Government tree, set monument, September 15, 1900.

Found iron pipe over granite monument, granite monument down 8 inches, placed short (4 1/2 in.) cast iron monument and tied, November 18, 1974.

Found granite monument, down +/-0.25 ft., April 2, 1990.

Found granite monument, up +/-0.15 ft., tied, March 21, 2001.

Found granite monument, up +/-0.15 ft., tied, August 18, 2006.

Retied granite monument, up 0.25 ft., November 4, 2011.

