

# MONUMENT 577

## CERTIFICATE OF LOCATION OF FOUND MONUMENT

Center of Section 36, Township 29 North, Range 22 West, County of Ramsey, State of Minnesota.

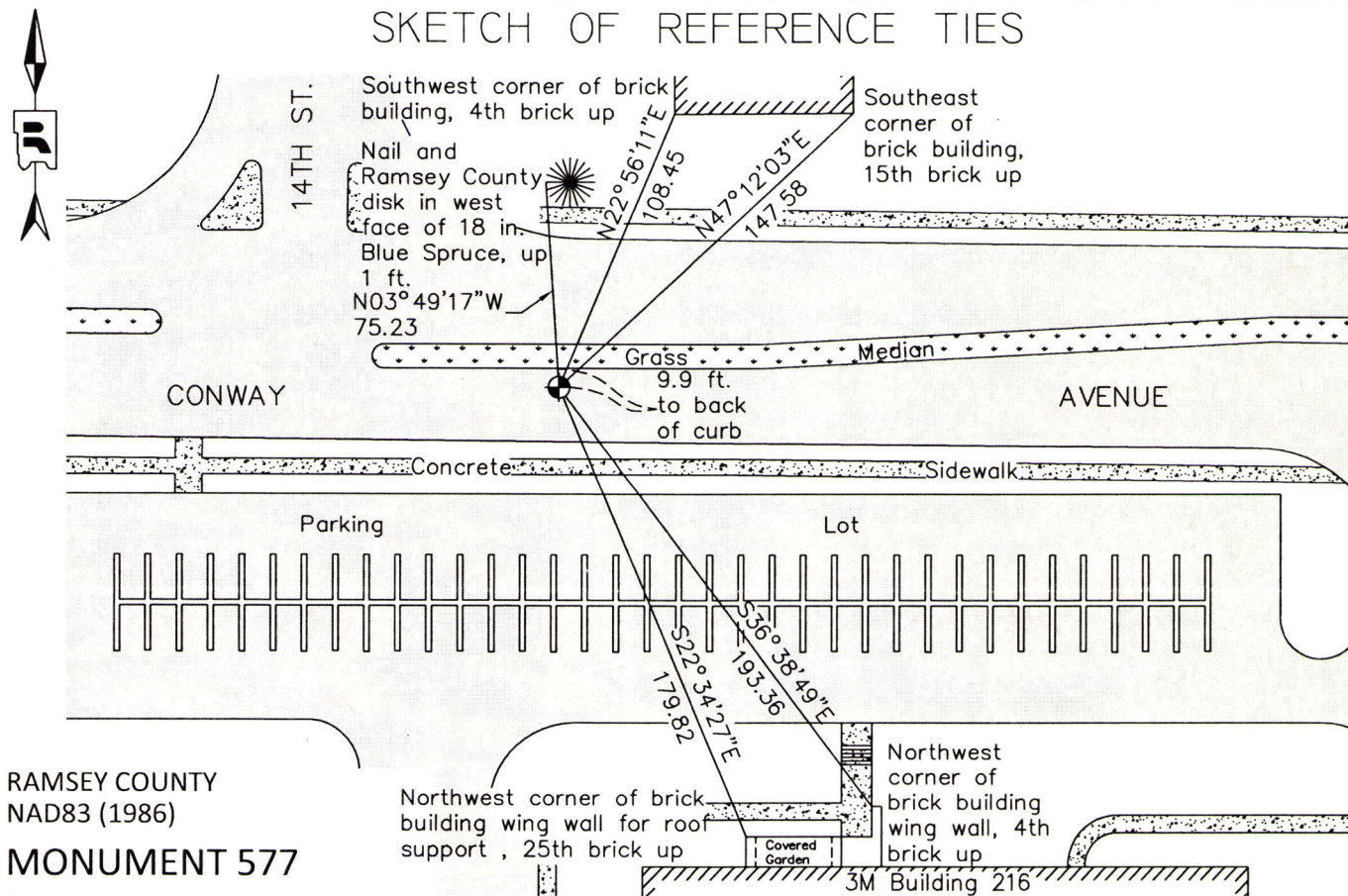
At the corner location shown on the sketch

On July 9, 2012 found a cast iron monument flush in bituminous road.

left monument as found       raised/lowered monument       removed monument (explain)

On July 9, 2012 lowered cast iron monument. Installed a cast iron manhole assembly over monument.

### SKETCH OF REFERENCE TIES



RAMSEY COUNTY  
NAD83 (1986)

### MONUMENT 577

X= 600568.341 (Easting)  
Y= 160327.125 (Northing)

ALL DISTANCES ARE SHOWN IN U.S. SURVEY FEET.  
BEARINGS ARE FOR TIE REFERENCE PURPOSES ONLY.

Statements of evidence relative to this corner are on the following page.

I hereby certify that this document was prepared by me or under my direct supervision and that I am a duly Licensed Land Surveyor under the laws of the State of Minnesota.

Daniel D. Baar      12-18-14  
Daniel D. Baar      Date

Minnesota License No. 45816

- County Surveyor       Deputy County Surveyor       Land Surveyor

OFFICE OF COUNTY SURVEYOR  
County of Ramsey

I hereby certify that this document was filed in the County Surveyor's office this 18th day of December, 20 14.

Craig W. Hinzman  
Craig W. Hinzman, L.S.  
Ramsey County Surveyor

# MONUMENT 577

Center of Section 36, Township 29 North, Range 22 West

Fixed the Center of Section 36 by Intersection, June 25, 1897.

Set monument, August 11, 1897.

Tied monument, June, 1956.

Set 20 inch cast iron monument, October 13, 1992.

Tied monument, September 23, 1993.

Retied monument, April 15, 2003.

Retied monument, May 21, 2008.

Tied monument for removal during road reconstruction, May 23, 2012.

Lowered 20 in. cast iron monument and placed a cast iron manhole assembly over it; tied, July 9, 2012.