

# MONUMENT 539

## CERTIFICATE OF LOCATION OF FOUND MONUMENT

Northeast Corner of Section 34, Township 29 North, Range 23 West, County of Ramsey, State of Minnesota.

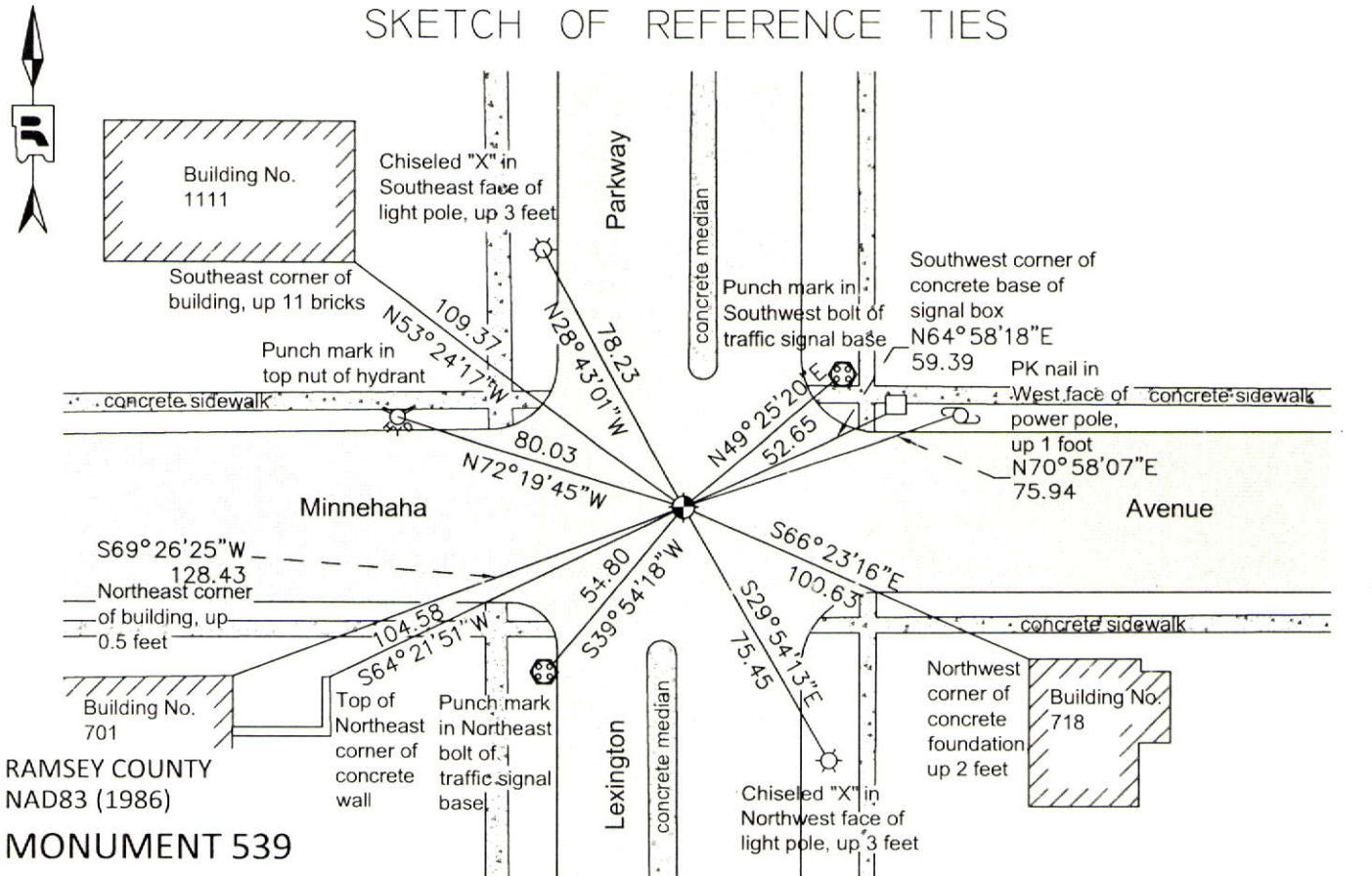
At the corner location shown on the sketch

On May 15, 2014 found a cast iron monument in bituminous road, down 0.03 feet; tied monument for removal during road reconstruction.

left monument as found       raised/lowered monument       removed monument (explain)

On August 8, 2014 placed a new 20 inch "Ramsey County" cast iron monument in bituminous road using construction offsets and ties, tied monument.

### SKETCH OF REFERENCE TIES



RAMSEY COUNTY  
NAD83 (1986)  
**MONUMENT 539**

X= 561279.741 (Easting)  
Y= 162765.671 (Northing)

ALL DISTANCES ARE SHOWN IN U.S. SURVEY FEET.  
BEARINGS ARE FOR TIE REFERENCE PURPOSES ONLY.

Statements of evidence relative to this corner are on the following page.

I hereby certify that this document was prepared by me or under my direct supervision and that I am a duly Licensed Land Surveyor under the laws of the State of Minnesota.

Daniel D. Baar      12-16-14  
Date

Daniel D. Baar  
Minnesota License No. 45816

County Surveyor  
 Deputy County Surveyor       Land Surveyor

OFFICE OF COUNTY SURVEYOR  
County of Ramsey

I hereby certify that this document was filed in the County Surveyor's office this 16th day of December, 20 14.

Craig W. Hinzman  
Craig W. Hinzman, L.S.  
Ramsey County Surveyor

# MONUMENT 539

Northeast Corner of Section 34, Township 29 North, Range 23 West

- |                   |   |
|-------------------|---|
| November 3, 1847  | Set post corner to Sections 26, 27, 34 and 35; Bur Oak 14 N82W 94, "Do" (Bur Oak N64E 1.72, Isaac N Higbee deputy surveyor.   |
| August 20, 1889   | Monument reset after grading, Chas Hunt - City of St. Paul Surveyor's Office notes.   |
| November 24, 1989 | Recovered cast iron monument, the top is broken off and the base was left intact, City of St. Paul Surveyor's Office.   |
| October 1, 1990   | Cast iron Monument with broken top, 0.2 ft. below asphalt, City of St. Paul Surveyor's Office.  |
| March 1, 2000     | Found cast iron monument (marked for painting target for 2000 aerial photo), City of St. Paul Surveyor's Office.  |
| July 10, 2004     | Replaced a broken cast iron monument with a cast iron monument stamped 'Section Corner' placed 0.05 feet below asphalt. Photos taken, City of St. Paul Surveyor's Office.         |
| May 15, 2014      | Offset monument for removal during road reconstruction. Checked existing ties, Ramsey County Surveyor's Office.   |
| August 8, 2014    | Removed monument and placed a new 20 in. "Ramsey County" cast iron monument in concrete road using construction offsets and ties. Tied monument, Ramsey County Surveyor's Office. |