

# MONUMENT 521

## CERTIFICATE OF LOCATION OF FOUND MONUMENT

Center of Section 30, Township 29 North, Range 22 West, County of Ramsey, State of Minnesota.

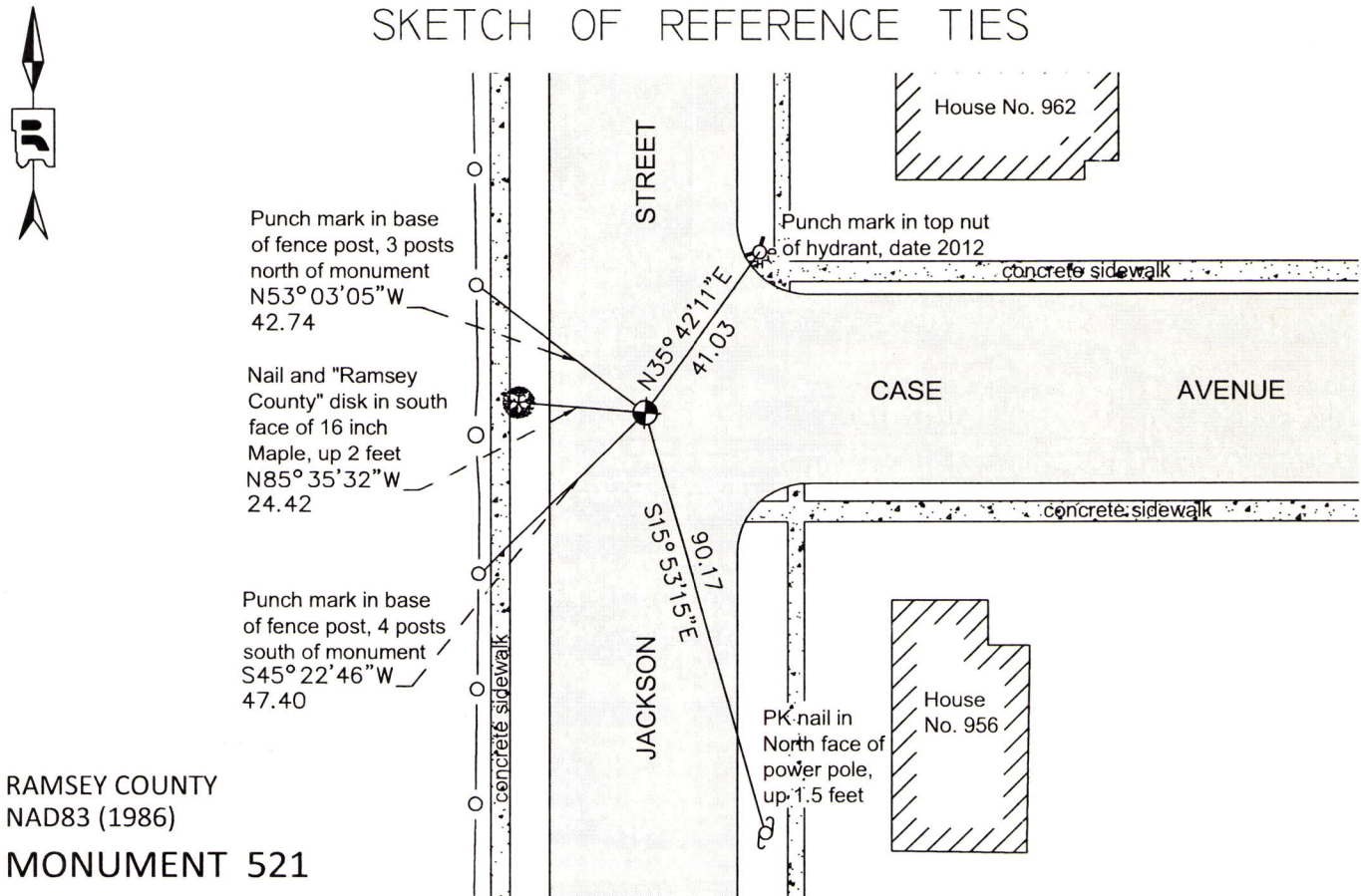
At the corner location shown on the sketch

On May 15, 2014 found a cast iron monument in bituminous road, down 0.5 feet. Tied monument for removal during road reconstruction.

left monument as found       raised/lowered monument       removed monument (explain)

On August 4, 2014 placed a new 4 and 3/8 inch "Ramsey County" cast iron monument, flush in bituminous road over existing cast iron monument using construction offsets and local ties, retied monument.

### SKETCH OF REFERENCE TIES



RAMSEY COUNTY  
NAD83 (1986)  
**MONUMENT 521**

X= 574275.217 (Easting)  
Y= 165416.435 (Northing)

ALL DISTANCES ARE SHOWN IN U.S. SURVEY FEET.  
BEARINGS ARE FOR TIE REFERENCE PURPOSES ONLY.

Statements of evidence relative to this corner are on the following page.

I hereby certify that this document was prepared by me or under my direct supervision and that I am a duly Licensed Land Surveyor under the laws of the State of Minnesota.

Daniel D. Baar      12-12-14  
Date  
Minnesota License No. 45816

County Surveyor       Land Surveyor  
 Deputy County Surveyor

OFFICE OF COUNTY SURVEYOR  
County of Ramsey

I hereby certify that this document was filed in the County Surveyor's office this 12th day of December, 20 14.

Craig W. Hinzman  
Craig W. Hinzman, L.S.  
Ramsey County Surveyor

# MONUMENT 521

Center of Section 30, Township 29 North, Range 22 West

- December 1, 1889 Monument set by J H Armstrong - City of St. Paul Surveyor's Office notes
- January 1, 1895 The plat of Oakland Cemetery shows a granite monument in place.
- December 1, 1959 Placed ties on PK, City of St. Paul Surveyor's Office.
- February 16, 1972 Monument out, City of St. Paul Surveyor's Office notes.
- January 1, 1988 Monument gone, large void developed under pavement at sewer, City of St. Paul Surveyor's Office notes.
- February 6, 1992 Used pin for traverse control, City of St. Paul Surveyor's Office.
- October 14, 1992 Recovered iron pin, placed ties and replaced iron pin with cast iron monument, City of St. Paul Surveyor's Office.
- January 19, 1995 Placed ties on cast iron monument, City of St. Paul Surveyor's Office.
- November 1, 1995 Used cast iron monument for traverse control, City of St. Paul Surveyor's Office.
- March 17, 2000 Found cast iron monument 0.10 feet below asphalt at concrete base grade (marked for painting target for 2000 target), City of St. Paul Surveyor's Office.
- October 11, 2012 Found cast iron monument 0.35 feet below street grade. Photos taken, City of St. Paul Surveyor's Office.
- May 15, 2014 Found a cast iron monument in bituminous road, down 0.5 feet. Offset monument for removal during road reconstruction, Ramsey County Surveyor's Office.
- August 4, 2014 Placed a new 4 and 3/8 inch "Ramsey County" cast iron monument, flush in bituminous road using construction offsets. Retied monument, Ramsey County Surveyor's Office.