

MONUMENT 4SC

CERTIFICATE OF LOCATION OF GOVERNMENT CORNER

North Quarter Corner of Section 5, Township 30 North, Range 23 West, County of Ramsey, State of Minnesota.

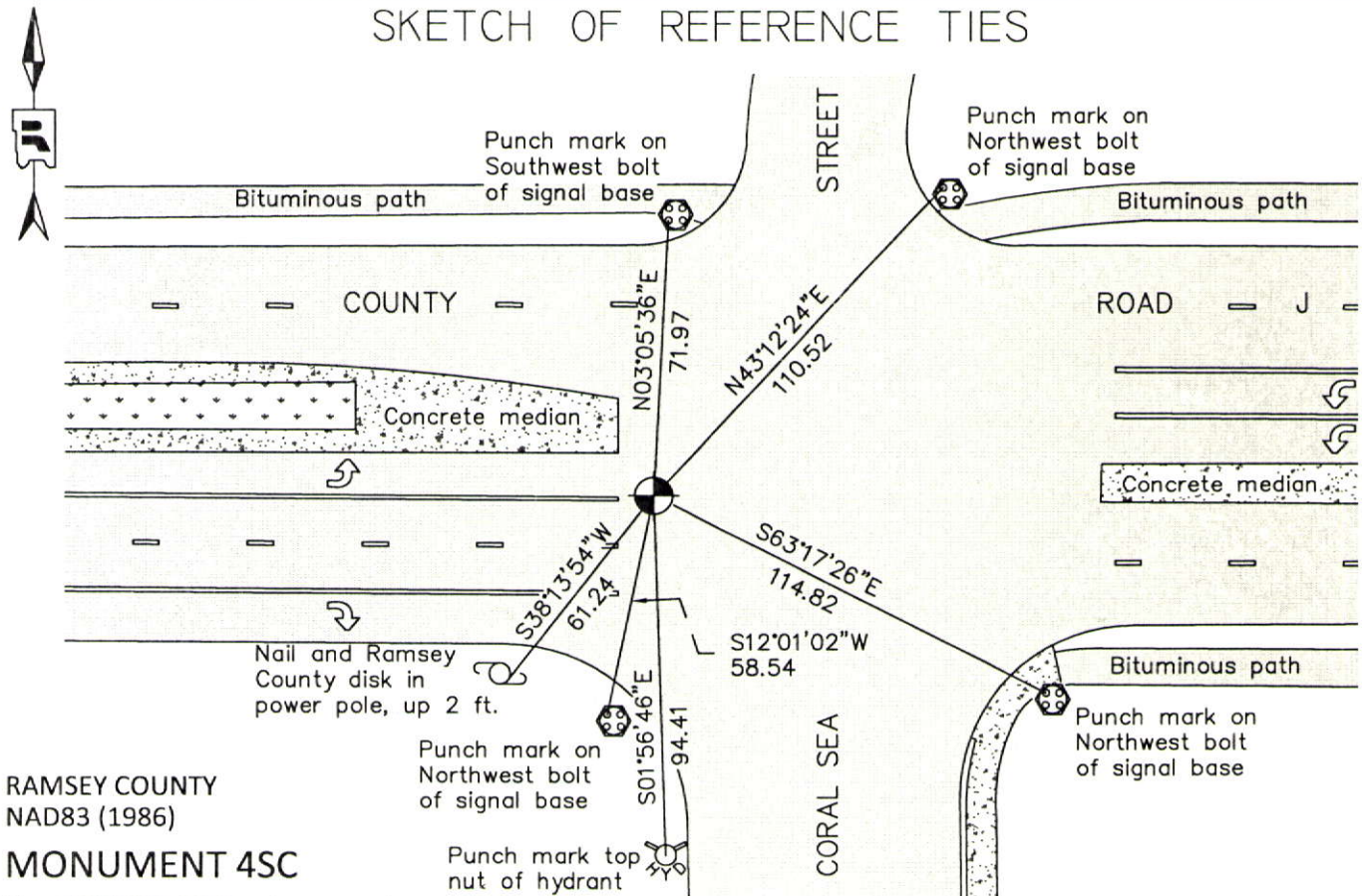
At the corner location shown on the sketch

On May 25, 2012 found a cast iron monument within a cast iron manhole assembly.

left monument as found raised/lowered monument removed monument (explain)

On _____ placed a _____

SKETCH OF REFERENCE TIES



RAMSEY COUNTY
NAD83 (1986)

MONUMENT 4SC

X= 547588.903 (Easting)
Y= 221573.005 (Northing)

Drafted by: KJ

ALL DISTANCES ARE SHOWN IN U.S. SURVEY FEET.
BEARINGS ARE FOR TIE REFERENCE PURPOSES ONLY.

Statements of evidence relative to this corner are on the following page.

I hereby certify that this document was prepared by me or under my direct supervision and that I am a duly Licensed Land Surveyor under the laws of the State of Minnesota.

Daniel D. Baar 12-30-14
Daniel D. Baar Date

Minnesota License No. 45816

- County Surveyor Land Surveyor
 Deputy County Surveyor

OFFICE OF COUNTY SURVEYOR
County of Ramsey

I hereby certify that this document was filed in the County Surveyor's office this 30th day of December, 20 14.

Craig W. Hinzman
Craig W. Hinzman, L.S.
Ramsey County Surveyor

MONUMENT 4SC

North Quarter Corner of Section 5, Township 30 North, Range 23 West

In establishing the 1/4 Corner on the North of Section 5, prorated East and West and fixed and set 1/4 Corner monument, January 21, 1903.

Retied monument, June 23, 1942.

Checked iron monument over stone monument, December, 1943; January, 1946; March, 1952; October, 1965; and April, 1968.

Checked iron monument over stone monument, October, 1965; and April, 1968.

Found iron in concrete, no date given in field book.

Found a granite monument down 0.57 ft.; placed a short 4-3/8 in. cast iron, July 31, 1975.

Tied monument, December 9, 1975.

Cast iron monument shown at this location on NORTH STAR INDUSTRIAL PARK plat, March 12, 1981.

Monument to be removed by construction, 1991.

Relocated position and tied, September 4, 1991.

Removed 20 in. cast iron monument closing corner and set a 20 in. cast iron monument marked "3rd Corr. Line" 0.14 ft. South of Closing Corner (on line between the SW Corner and the S 1/4 Corner of Sec. 34, T.31, R.23), July 26, 1995.

Tied monument 4SC, December 14, 1998.

Retied monument, June, 2004.

Tied out monument for removal during County Road J reconstruction, June 6, 2006.

MONUMENT 4SC

North Quarter Corner of Section 5, Township 30 North, Range 23 West

Set a 20 in. cast iron monument within a cast iron manhole assembly,
April 23, 2007.

Tied out monument, June 29, 2007.

Checked condition of cast iron monument within a cast iron manhole assembly and
ties, May 25, 2012.