

# MONUMENT 452

## CERTIFICATE OF LOCATION OF FOUND MONUMENT

North Quarter Corner of Section 19, Township 29 North, Range 22 West, County of Ramsey, State of Minnesota.

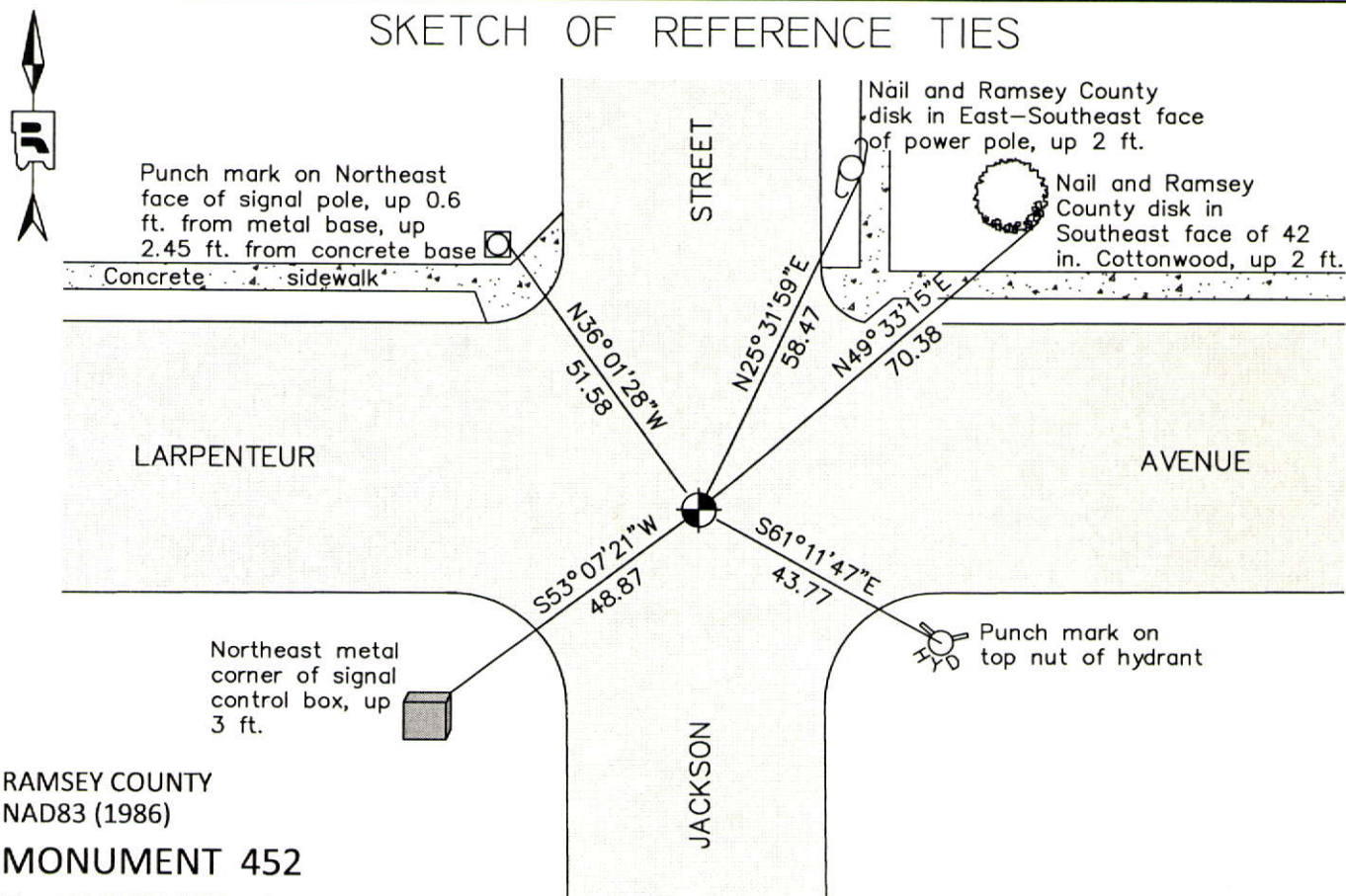
At the corner location shown on the sketch

On July 30, 2012 found a cast iron monument down 0.2 ft. in bituminous road.

left monument as found       raised/lowered monument       removed monument (explain)

On \_\_\_\_\_ placed a \_\_\_\_\_

### SKETCH OF REFERENCE TIES



RAMSEY COUNTY  
NAD83 (1986)  
**MONUMENT 452**

X= 574227.187 (Easting)  
Y= 173321.250 (Northing)

ALL DISTANCES ARE SHOWN IN U.S. SURVEY FEET.  
BEARINGS ARE FOR TIE REFERENCE PURPOSES ONLY.

Statements of evidence relative to this corner are on the following page.

I hereby certify that this document was prepared by me or under my direct supervision and that I am a duly Licensed Land Surveyor under the laws of the State of Minnesota.

Daniel D. Baar      12-30-14  
Daniel D. Baar      Date

Minnesota License No. 45816

County Surveyor       Land Surveyor  
 Deputy County Surveyor

OFFICE OF COUNTY SURVEYOR  
County of Ramsey

I hereby certify that this document was filed in the County Surveyor's office this 30th day of December, 20 14.

Craig W. Hinzman  
Craig W. Hinzman, L.S.  
Ramsey County Surveyor

# MONUMENT 452

North Quarter Corner of Section 19, Township 29 North, Range 22 West

Set 1/4 Section post, Bur Oak 10 S51°W 11, "Do" (Bur Oak) 10 S82°E 40, November 29, 1847.

Monument not found, January 31, 1934. (City of Saint Paul Surveyor's Office)

Checked monument, August, 1948.

Re-established monument, December 1, 19xx (Date not legible in survey notes).

Found a cast iron monument, 1974.

Checked monument, August 12, 1977.

Tied cast iron monument, down +/-0.2 ft., May 10, 1990.

Retied monument, July 12, 2002.

Retied monument, August 6, 2007.

Tied cast iron monument, December 18, 2009. (City of Saint Paul Surveyor's Office)

Checked condition of monument and ties, July 30, 2012.