

# MONUMENT 442

## CERTIFICATE OF LOCATION OF GOVERNMENT CORNER

North Quarter Corner of Section 20, Township 29 North, Range 23 West, County of Ramsey, State of Minnesota.

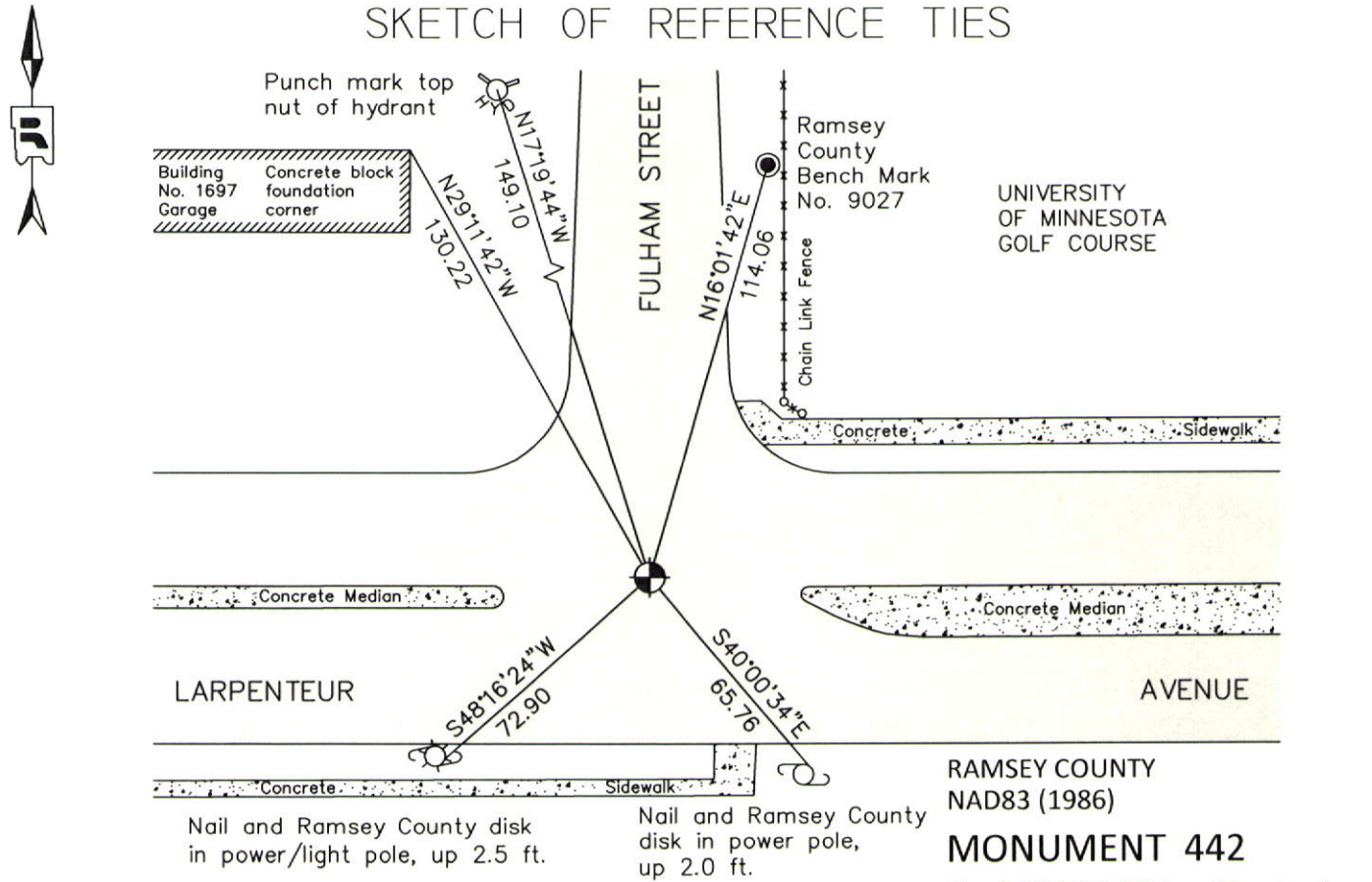
At the corner location shown on the sketch

On June 20, 2011 found a cast iron monument, within a cast iron manhole assembly.

left monument as found       raised/lowered monument       removed monument (explain)

On \_\_\_\_\_ placed a \_\_\_\_\_

### SKETCH OF REFERENCE TIES



ALL DISTANCES ARE SHOWN IN U.S. SURVEY FEET.  
BEARINGS ARE FOR TIE REFERENCE PURPOSES ONLY.

RAMSEY COUNTY  
NAD83 (1986)  
**MONUMENT 442**  
X= 548119.557 (Easting)  
Y= 173189.984 (Northing)

Statements of evidence relative to this corner are on the following page.

I hereby certify that this document was prepared by me or under my direct supervision and that I am a duly Licensed Land Surveyor under the laws of the State of Minnesota.

Daniel D. Baar      12-30-14  
Daniel D. Baar      Date  
Minnesota License No. 45816

County Surveyor  
 Deputy County Surveyor       Land Surveyor

OFFICE OF COUNTY SURVEYOR  
County of Ramsey

I hereby certify that this document was filed in the County Surveyor's office this 30th day of December, 20 14.

Craig W. Hinzman  
Craig W. Hinzman, L.S.  
Ramsey County Surveyor

# MONUMENT 442

North Quarter Corner of Section 20, Township 29 North, Range 23 West

Set 1/4 Section post, Bur Oak 14 N38°E 25, W. Oak 20 S87°W 84, November 3, 1847.

Monument set by R.J. Johnson, January, 1889 (City of St. Paul notes).

Placed ties on iron, March 25, 1934 (City of St. Paul notes).

Cast iron monument set by the City of St. Paul, no date given in field book.

Found a cast iron monument, 1976.

Checked monument, August 12, 1977.

Found cast iron monument broken, checked ties and set P.K. nails, June 20, 1984.

Set an 8 in. cast iron monument in concrete, June 21, 1984.

Recovered cast iron monument at grade, March 25, 1991 (City of St. Paul notes).

Construction Department removed monument, +/-April, 1997.

Set a 20 in. cast iron monument +/-15 in. below new concrete pavement. Contractor to set a 12 in. cast iron manhole assembly over monument, July 29, 1997.

Tied monument, March 23, 2001.

Retied monument, July 25, 2006.

City of St. Paul tied a cast iron monument under a metal cover 1.2 ft. below concrete pavement as shown on the Certificate of Location of Government Corner on file at the St. Paul City Surveyor's Office, November 30, 2009.

Retied a cast iron monument, within a cast iron manhole assembly, June 20, 2011.